



Cable Access Openings Allow Cables to be Routed Through Wiring Blocks Directly to Point of Termination.

Wiring Blocks Available With or Without Detachable Legs Which can be Removed During or After Termination.

FEATURES

- Provides a reliable, cost-effective, front terminated solution.
- Total interoperability with existing 110 systems.
- Flexible solution consisting of 50-, 100-, and 300-pair wiring blocks, 4- and 5-pair connecting blocks, and a complete line of accessories.
- Versatile solution consisting of 64- and 192-wiring blocks, 4-pair connecting blocks, field termination kits, and a complete line of accessories.
- Complete Hubbell Labeling Solution includes software, laser-printable sheets, and clear covers (order separately).

SPECIFICATIONS

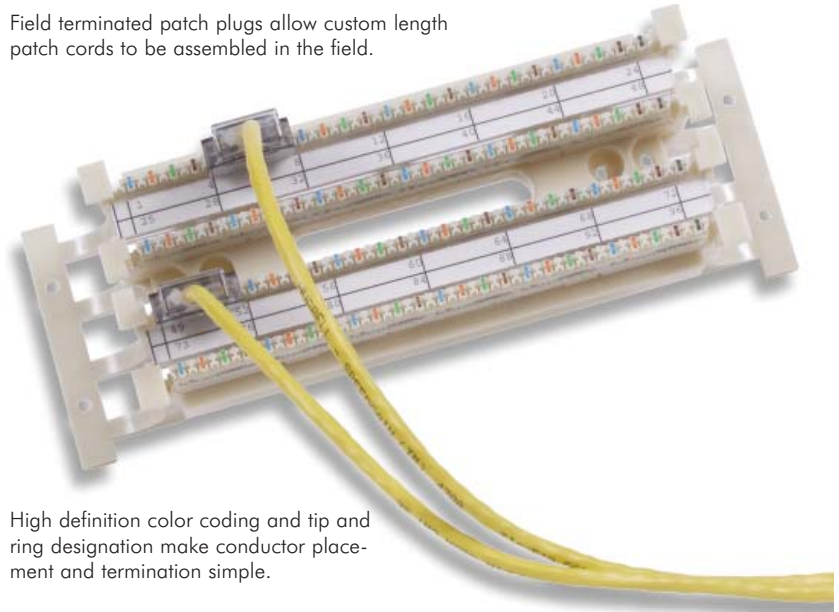
- ◆ Connecting Blocks
Material: Polycarbonate UL 94V-0.
Contact material: Phosphor bronze.
Contact plating: Tin/lead solder.
Conductor type: Solid or stranded (7).
Conductor: Solid or stranded 26-22 AWG.
- ◆ Wiring Blocks
Material: Polycarbonate UL 94V-0.
Conductor: Solid or stranded 26-22 AWG.

STANDARDS/LISTINGS/VERIFICATIONS

- Verified to exceed TIA/EIA-568-B.2 Category 5e component specifications.
- cUL Listed.

SpeedGain[®] HUBBELL Cross Connect System, 110

Field terminated patch plugs allow custom length patch cords to be assembled in the field.



High definition color coding and tip and ring designation make conductor placement and termination simple.

Hubbell's 110 Cross Connect System is a flexible, reliable and economical, high-density system that exceeds the ANSI/TIA/EIA-568-B.2 Category 5e component performance specifications.

110 systems are used to cross connect and manage communications equipment wiring in the telecommunications closet and main distribution frames or as a consolidation point. Specifically, 110 systems are for voice and data applications where limited space prevents the use of a relay rack, or when a permanent cost-effective solution is desired versus the modularity of a patch panel.

Create a flexible, high density, 110 termination field for voice and data applications by mounting 110 wiring blocks to the wall or plywood backboard. Wiring blocks are available for 50- 100- and 300-pairs. Additionally, the 50- and 100-pair blocks feature removable standoff legs. A complete line of 110 accessories are also available.

ORDERING INFORMATION**Field Termination Kits, 110**

Description	Catalog No.
Field Term Kit, 110/50-pair with 4-pair blocks	110BLK50FTK4
Field Term Kit, 110/50-pair with 5-pair blocks	110BLK50FTK5
Field Term Kit, 110/100-pair with 4-pair blocks	110BLK100FTK4
Field Term Kit, 110/100-pair with 5-pair blocks	110BLK100FTK5
Field Term Kit, 110/300-pair with 4-pair blocks	110BLK300FTK4
Field Term Kit, 110/300-pair with 5-pair blocks	110BLK300FTK5

**Wiring Blocks, 110**

Description	Catalog No.
Wiring block, 110/50-pair with standoff legs	110BLK50BWL
Wiring block, 110/50-pair without standoff legs	110BLK50BNL
Wiring block, 110/100-pair with standoff legs	110BLK100BWL
Wiring block, 110/100-pair without standoff legs	110BLK100BNL
Wiring block, 110/300-pair without standoff legs	110BLK300BWL

**Termination Tool, 110/5-pair**

110/5-pair tool is designed to seat 110 connecting blocks and terminate and cut UTP cable on 110 wiring blocks.

Description	Catalog No.
Termination tool, 110/5-pair (includes head and blades)	T5PPD110
Replacement tool head, 110/5-pair (includes blades)	T5PPD110H
Replacement tool blades, 110/5-pair	T5PPD110B

**Connecting Blocks, 110**

110 connecting blocks are terminated to the 110 wiring blocks using the 110/5-pair termination tool. Available in 4- and 5-pair sizes.

Description	Catalog No.
Connecting Blocks, 110/4-pair (kit of 10)	110CB4PR10
Connecting Blocks, 110/5-pair (kit of 10)	110CB5PR10

**Hubbell Labeling Solution**

The Hubbell Labeling Solution 110 laser-printable label sheets and covers can be mounted between each wiring channel to identify individual station ports or pair counts. See page B56 for more information.

Description	Catalog No.
Laser-printable label sheets, 6-110 /110, white	XPL11010W
Laser-printable label sheets, 6-110 /110, yellow	XPL11010Y
Laser-printable label sheets, 6-110 /110, blue	XPL11010B

**Hubbell Premise Wiring**

HUBBELL INCORPORATED (Delaware)

14 Lord's Hill Road • Stonington, CT 06378-0901 • (860) 535-8326 • 800-626-0005
Fax: (860) 535-8328 • Internet site: <http://www.hubbell-premise.com>

Worldwide Locations

Hubbell Premise Wiring, Asia Pacific	852-2836-7131	Fax: 852-2836-7132	Hubbell Premise Wiring, Latin America	305-408-4501	Fax: 305-408-8201
Hubbell Canada Inc.	905-839-1138	Fax: 905-839-9108	Hubbell de Mexico, S.A. de C.V.	(5255) 9151-9999	Fax: (5255) 9151-9989
Hubbell Premise Wiring, Central America	506-309-4158	Fax: 506-260-1616	Hubbell Premise Wiring, Middle East	971-4-393-4192	Fax: 971-4-393-4194
Hubbell Premise Wiring, China	8621-6309-0119	Fax: 8621-6309-0122	Hubbell-Taian Co., Ltd., Taiwan	886-2-2522-1862	Fax: 886-2-2522-1872
Hubbell Premise Wiring, Colombia	571-245-8940	Fax: 571-340-0925	Hubbell Premise Wiring, Turkey	90-216-313-5016	Fax: 90-216-414-8148
Hubbell Premise Wiring, Europe	44-01283 500500	Fax: 44-01283 500400	Hubbell Premise Wiring, Venezuela	58-416-680-7453	Fax: 58-281-274-7900
Hubbell Int'l. Inc., Korea Branch	82-2-(0)2607-1363	Fax: 82-2-(0)2603-7386			