



- Third Party Verified Category 6A Component Exceeds TIA Limits
- Plug Optimized for High Density Switch Port Count
- 10-Gigabit Application Assurance
- PoE Ready

#### FEATURES

- Extended strain relief for added protection in high density applications
- Customized patch cable designed for optimized IL and AXT
- Ascent sled compartmentalizes conductors to reduce NEXT and improved balance
- Soft flexible cable for easy cable management
- Backwards compatible to Cat 6, 5e, 5 & 3

#### SPECIFICATIONS

- Cable Construction:
  - Conductor: 26AWG UTP
  - Jacket: Dual Layer Flame-Retardant PVC – CM Rated
- Plug Material:
  - Plug body: Polycarbonate UL 94V-0
  - Plug boot: Polycarbonate UL 94V-0
  - Contact: High strength copper alloy
  - Plating: 50 micro-inch Gold with 100 micro-inch under plating
- Mechanical:
  - Cable to plug tensile strength: 20+ lbs
  - Mating cycles: 2000+

#### STANDARDS

- TIA-568-C.2 Category 6A component
- Channel: Third-Party tested for TIA 568-C.2
- Category 6A and ISO 11801 Class E<sub>A</sub>
- Application: Third-Party qualified for 10 Gigabit Ethernet Transmission IEEE 802.3an
- Current Capacity: Exceeds current levels for PoE and PoE+ IEEE 802.3at
- UL Listed 1863

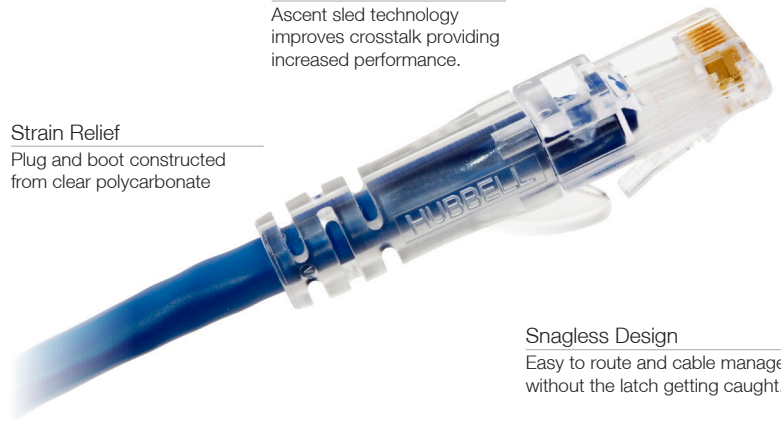
## HUBBELL NextSpeed CATEGORY 6A Ascent Patch Cords

#### Performance

Ascent sled technology improves crosstalk providing increased performance.

#### Strain Relief

Plug and boot constructed from clear polycarbonate



#### Snagless Design

Easy to route and cable manage without the latch getting caught.

#### Technology

Star spacer separates pairs for enhanced Category 6A performance.



**Ascent Category 6A** solution is a tuned system of structured cabling components designed and balanced to work together providing bandwidth beyond 625MHz.

HC6A's enhanced custom cable and unique plug design provides superior ANEXT, NEXT and Return Loss parameters supporting 10Gigabit Ethernet with Zero Bit Error transmissions.

The well balanced design of Ascent's connections allow the system to be utilized in links under 10 meters, providing a fully compliant solution from 1 to 90 meters.

Don't jeopardize your network, Hubbell's Ascent 6A solution is the product for the digital world, and provides a migration path for tomorrow's emerging network applications

#### APPLICATIONS

- 10GBASE-T (10-Gigabit Ethernet )
- Consolidation, Server Clustering & Scalability Virtualization
- Mass Data Storage, Storage Area Networks (SAN)
- Web enablement of applications (WEB 2.0)
- Voice Protocol – VoIP, SIP, SCCP, MGCP
- Video Protocol – IPTV, RTSP, RTP



## ORDERING INFORMATION

## NEXTSPEED® Ascent C6A Patch Cords

Length	Catalog No	Length	Catalog No
1'	<b>HC6Axx01</b>	10'	<b>HC6Axx10</b>
3'	<b>HC6Axx03</b>	15'	<b>HC6Axx15</b>
5'	<b>HC6Axx05</b>	20'	<b>HC6Axx20</b>
7'	<b>HC6Axx07</b>		

xx = color. **B** (Blue), **BK** (Black), **GN** (Green), **GY** (Gray), **OR** (Orange), **P** (Purple), **R** (Red), **W** (White) or **Y** (Yellow).  
MTO lengths are available from 25 ft. to 100 ft. in 5 ft. increments.



## RELATED PRODUCT

## NEXTSPEED® Ascent C6A Component Jack

Delivery: Catalog No

1 per bag/carton of 25 **HJ6Axx**

25 per bag/carton of 1 **HJ6Axx25**

xx = color. **AL** (Almond), **BK** (Black), **B** (Blue), **BN** (Brown), **EI** (Electric Ivory), **GL** (Gold), **GY** (Gray), **GN** (Green), **LA** (Light Almond), **OW** (Office White), **OR** (Orange), **P** (Purple), **R** (Red), **TI** (Telco Ivory), **W** (White), **Y** (Yellow).



## NEXTSPEED® Ascent C6A, Universal Patch Panels

Format	Width	Color	Catalog No.
Standard	19" (483)	Black	<b>HP6AxxU</b>
Standard	19" (483)	Silver	<b>HP6AxxUS</b>
Angled	19" (483)	Black	<b>HP6AxxAU</b>

xx= port size. **24** (24 ports) and **48** (48 ports).  
Standard only is also available in **96** (96 ports)

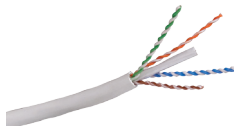


## NEXTSPEED® Ascent C6A, UTP Cable, 4-Pair

Spool (1000' length)

Color	Riser	Plenum
Blue	<b>C6ASRB</b>	<b>C6ASPB</b>
Gray	<b>C6ASRGY</b>	<b>C6ASPGY</b>
White	<b>C6ASRW</b>	<b>C6ASPW</b>
Yellow	<b>C6ASRY</b>	<b>C6ASPY</b>

See full line catalog for all available colors.



## NEXTSPEED® Ascent C6A, Trunk Cable Assemblies

BIDnet™ assemblies provide simplicity for permanent links between switches, servers, patch panels, MUTOAs and zone distribution areas enabling for easy MAC's to the infrastructure.

- Simplifies installation time by 75%
- Reduce initial installation cost by 30%
- 100% factory tested and assembled and backed with MC25 warranty

Note: Contact your local distributor today or call our offices for additional information on the availability of the BIDnet™ Pre-Terminated Copper Trunk Assemblies.

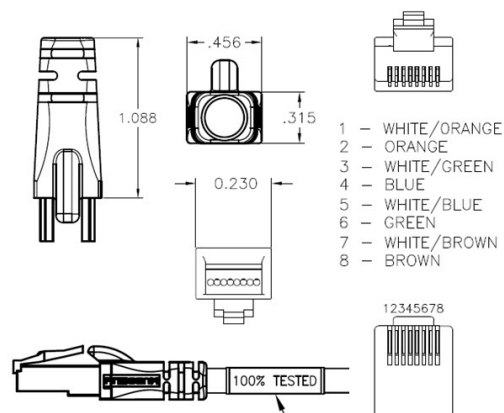


## NEXTSPEED® Category 6, 10 Gigabit, Field Termination Kits

Description	Catalog No.
64-Pair Kit with legs and 16 connecting blocks	<b>6110FTK64WL</b>
64-Pair Kit w/o legs and 16 connecting blocks	<b>6110FTK64NL</b>
192-Pair Kit with legs and 48 connecting blocks	<b>6110FTK192WL</b>



## DIMENSIONS



## INTEGRATED SOLUTIONS



## Station &amp; Cross-Connect Solutions

- Work Station Products
- Cross Connect Products
- Delivery Products
- Datacenter Products
- Next Frame Cable Management
- Velcro® Cable Management



Hubbell's HC patch cords have been designed to provide flexibility in racks and cabinets with a high density profile design and custom cable. The HC design aids cable management in the datacenter and telecommunications rooms.



**HUBBELL®**  
Premise Wiring

[www.hubbell-premise.com](http://www.hubbell-premise.com)



Hubbell Premise Wiring • Hubbell Incorporated (Delaware) • 23 Clara Drive • Suite 103 • Mystic, CT 06355 • Phone (800) 626-0005 • FAX (860) 535-8328  
Printed in U.S.A. Specifications subject to change without notice.

® is a registered trademark of Hubbell Incorporated.

PLDC010 04/11