



HIRSCHMANN


A BELDEN BRAND

Product information GML 209 NJ LED 24 VR YE schwarz/black

Industrial Connecting Solutions:Rectangular Connectors:Valve Connectors (Type A -B -C):Type B:Field Attachable Valve Connectors:Valve Connectors with electronic insert (Industrial standard):GML 209

NJ LED 24 VR YE schwarz/black

<http://www.e-catalog.beldensolutions.com/link/57078-24228-256261-256266-256271-276218-24327-35255/en/conf/ui.state>

Name	GML 209 NJ LED 24 VR YE schwarz/black
	
function indicator (LED) with freewheeling diode and protective circuit (varistor)	
Delivery informations	
Availability	available
Product description	
Description	function indicator (LED) with freewheeling diode and protective circuit (varistor)
Type	GML 209 NJ LED 24 VR YE schwarz/black
Order No.	933 929-100
Other standard types	transparent housing, cable gland grey: Order No. 933 929-106
Number of contacts	2 + PE
Cable gland	PG 9 (black)
Conductor size	max. 1.5 mm ²
Standard	industrial standard (11 mm)
Housing Color	transparent
Construction type	B
Description of Wiring	
LED color	LED yellow
Suppressor	Varistor
Technical data	
Pin dimensions	6.3 mm x 0.8 mm
Rated voltage	AC/DC 24 V
Rated current	8 A
Contact resistance	<= 4 mOhm
Type of termination	screw / cable shoe / cable eye
Suitable cables	4.5 mm to 7 mm diameter
Mounting	central screw
Material	
Contact surface material	Sn
Contact bearer material	PA
Housing material	PA
Environmental conditions	
Protection class (IEC 60529)	IP 65
Pollution severity	3
Temperature range	-40 °C to +90 °C
Inflammability class	
Housing	94 V-1
Contact bearer	94 HB
Approvals	
UR	UR
VDE	VDE
Packing unit	
Packaging unit	50 pieces

Industrial Connecting Solutions:Rectangular Connectors:Valve Connectors (Type A -B -C):Type B:Field Attachable Valve Connectors:Valve Connectors with electronic insert (Industrial standard):GML 209

NJ LED 24 VR YE schwarz/black

<http://www.e-catalog.beldensolutions.com/link/57078-24228-256261-256266-256271-276218-24327-35255/en/conf/uistate>

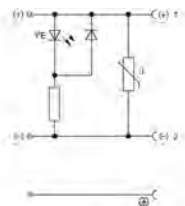
Scope of delivery and accessories

Accessories to order separately

(NBR) flat gasket GM 207-3, Order No. 731 423-002; knurled screw GDM 3011-8, Order No. 732 574-001; stainless steel screw GDM 3011 RF-1, Order No. 734 363-001

Picture

Drawing



Belden Deutschland GmbH

Im Gewerbepark 2
58579 Schalksmühle
Germany
Phone: +49 7127/14-1806
E-Mail: icos-sales@belden.com

The information published in the websites has been compiled as carefully as possible. It is subject to alteration without notice in technical as well as in price-related/commercial respect. The complete information and data were available on user documentation. Mandatory information can only be obtained by a concrete query.