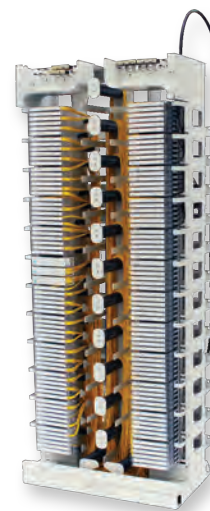


# Enhanced Management Frame (EMF) Bay

7 ft Bay, includes 12 rear troughs, integrated IBU, cable clamp assemblies, paper mounting template, and mounting bolts. Cable grips must be ordered separately

CORNING



Part Number: CCF-BAY-7

## Specifications

### General Specifications

Application	Central Office, Carrier Networks
Product Type	Frames & Cable Managers

### Design - Hardware

Housing Type	EMF
Housing Color	White

### Mechanical Characteristics

Dimensions (HxWxD)	213.4 cm x 86.4 cm x 43.2 cm (84.0 in x 34.0 in x 17.0 in)
--------------------	--

# Enhanced Management Frame (EMF) Bay

7 ft Bay, includes 12 rear troughs, integrated IBU, cable clamp assemblies, paper mounting template, and mounting bolts. Cable grips must be ordered separately

CORNING

## Ordering Information

Part Number	CCF-BAY-7
Product Description	Enhanced Management Frame (EMF) Bay; 7 ft Bay, includes 12 rear troughs, integrated IBU, cable clamp assemblies, paper mounting template, and mounting bolts. Cable grips must be ordered separately

## Shipping Information

Units per Delivery	1/1
--------------------	-----

Corning Cable Systems LLC • PO Box 489 • Hickory, NC 28603-0489 USA

800-743-2675 • FAX: 828-325-5060 • International: +1-828-901-5000 • [www.corning.com/cablesystems](http://www.corning.com/cablesystems)

A complete listing of the trademarks of Corning Cable Systems is available at [www.corning.com/cablesystems/trademarks](http://www.corning.com/cablesystems/trademarks).

Corning Cable Systems is ISO 9001 certified. © 2012 Corning Cable Systems. All rights reserved.

CORNING