

product spotlight

ZR1 & ZR2 BRACKETS

Great Lakes Case & Cabinet's "ZR" brackets offer customers the opportunity to do more within the 29" or 30" wide enclosure. These "Zero-U" brackets easily attach to the flexible mounting profile (FMP) which are a series of holes along each rail, positioned at one-RMU (Rack Mounting Unit [1.75"]) increments, outside of the standard pattern for EIA 310-D compliant rail-mounted equipment.

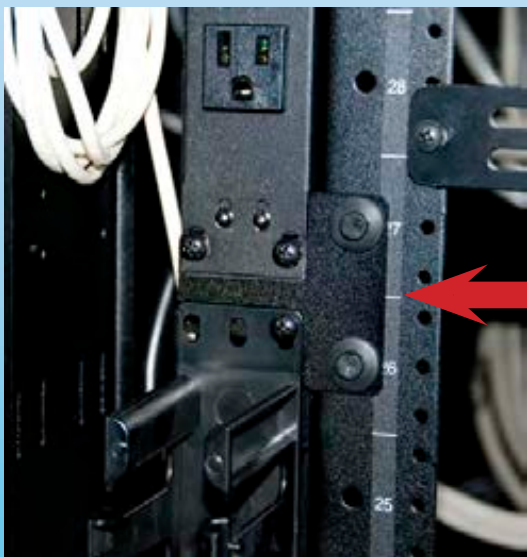
The ZR Brackets are available in two sizes: 1U (ZR1) and 2U (ZR2). They allow you to mount a variety of EIA accessories and equipment directly to the rail without sacrificing any valuable space between the rails in the traditional RMU mounting pattern.

From patch panels to power strips, cable management accessories, to mounting equipment, the ZR brackets ensure that these items are mounted securely while offering tremendous flexibility in the configuration of a Great Lakes enclosure.

The ZR brackets can be installed by Great Lakes, where specified along with any purchased Great Lakes accessories, at no charge, prior to shipping, making it even easier for you to begin installing servers and equipment as soon as your enclosure arrives.

Should you need additional or specialized mounting space within the enclosure beyond that offered by our ZR brackets, please call your Great Lakes representative. We have created a number of specialized applications and we will do our best to find the right way to meet your specific need.

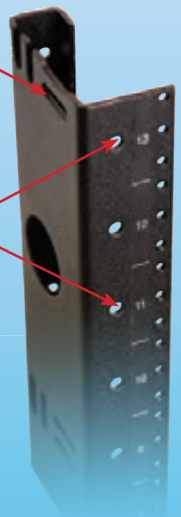
It's all part of the world class customer service offered every day by Great Lakes Case & Cabinet. For more information on the ZR bracket, please call us at 1-866 TRY-GLCC (1-866-879-4522) or visit us on the web at werackyourworld.com.



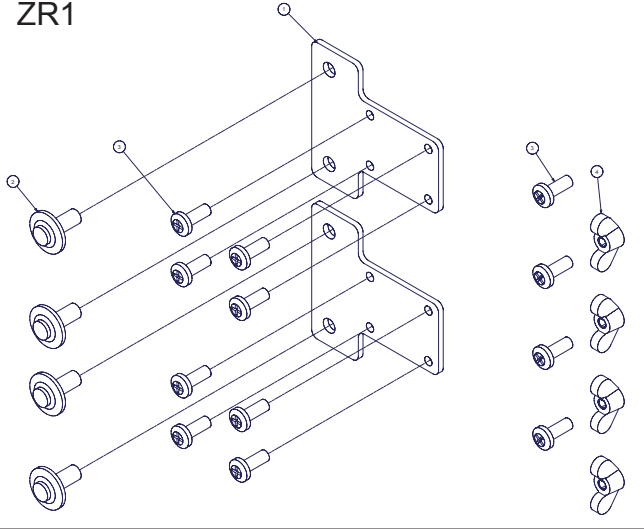
Part No.	Description
ZR1	Zero Rack Bracket Kit, 1 RMU
ZR2	Zero Rack Bracket Kit, 2 RMU

Lacing Points

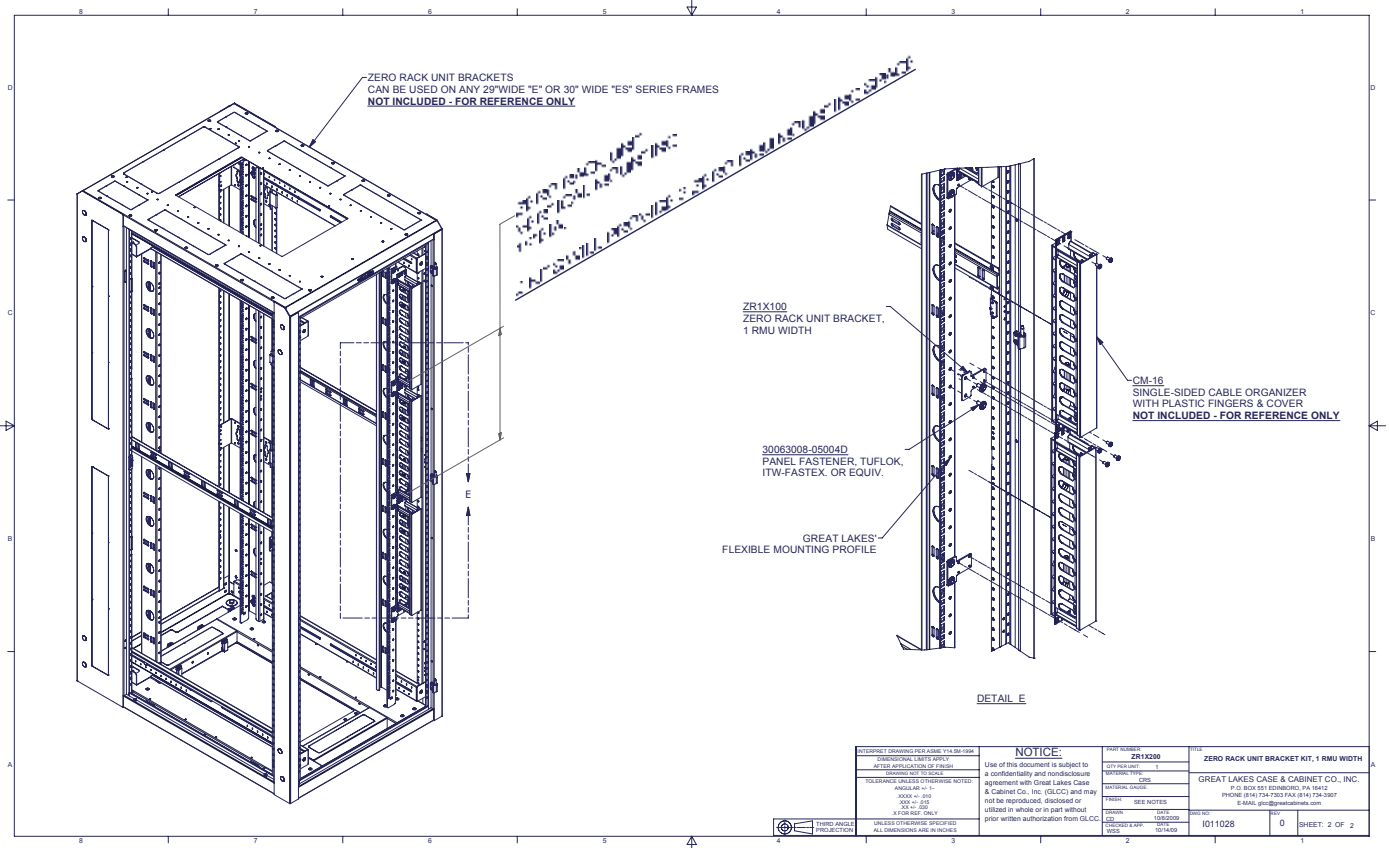
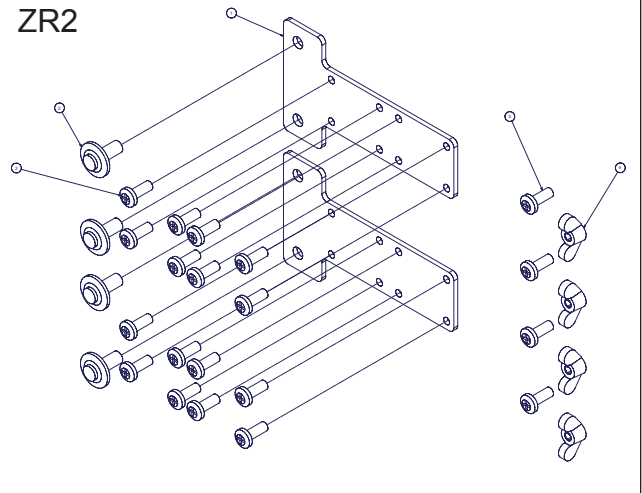
Flexible Mounting Profile; brackets attach to FMP holes



ZR1



ZR2



<p>INTERPRET DRAWING FOR ASSEY VIA 3D VIEW</p> <p>ORIENTATION: THIRD ANGLE</p> <p>USE OF THIS DOCUMENT IS SUBJECT TO A CONDITIONAL AND NONDISCLOSURE AGREEMENT WITH GREAT LAKES CASE & CABINET CO., INC. (GLCC) AND MAY NOT BE REPRODUCED, DISCLOSED OR UTILIZED IN WHOLE OR IN PART WITHOUT PRIOR WRITTEN AUTHORIZATION FROM GLCC.</p>	<p>NOTICE:</p> <p>Use of this document is subject to a conditionally and nondisclosure agreement with Great Lakes Case & Cabinet Co., Inc. (GLCC) and may not be reproduced, disclosed or utilized in whole or in part without prior written authorization from GLCC.</p>	<p>PROJECT: ZR1X200</p> <p>QTY PER UNIT: 1</p> <p>REVISED: 005</p> <p>DATE: 01/10/28</p> <p>BY: 0</p>	<p>ZERO RACK UNIT BRACKET KIT, 1 RMU WIDTH</p> <p>GREAT LAKES CASE & CABINET CO., INC.</p> <p>P.O. BOX 551 EDINBORO, PA 16412</p> <p>PHONE: 814.734.7303 FAX: 814.734.3907</p> <p>E-MAIL: glcc@greatcabinets.com</p>
---	--	---	--

CORPORATE HEADQUARTERS

P.O. Box 551
Edinboro, PA 16412
1.866.TRY.GLCC
(1.866.879.4522)
Phone: 814.734.7303
Fax: 814.734.3907
glcc@greatcabinets.com

GREAT LAKES MANUFACTURING, INC.

1521 Enterprise Road
Corry, PA 16407
Phone: 814.734.2436
Fax: 814.665.7025
werackyourworld.com
glm@greatmanufacturing.net

WESTERN DISTRIBUTION

4750 Joule Street
Reno, NV 89502
Phone: 775.829.9913
Fax: 775.829.9926
glcc@greatcabinets.com

GREAT LAKES INTERNATIONAL LTD.

Aerbridge House, Unit 14
Dunshaughlin Business Park
Dunshaughlin Co. Meath
Ireland
Phone: 011 353 1 825 8777
Fax: 011 353 1 825 8778

GREAT LAKES HUNGARY KFT

Zsurló utca 13
8000 Székesfehérvár
Hungary
Phone: 011 36 22 880 420
Fax: 011 36 22 880 429