



F028KMA4  
FlexTwist™ Flexible Twist for WR28, 37.0–40.0 GHz, with interface types PBR320 and UBR320, 1000 mm

## Electrical Specifications

Operating Frequency Band	37.0 – 40.0 GHz
Attenuation	1.00 db/ft   3.28 db/m
Average Power	75 W
Peak Power	20.0 kW
VSWR	1.20

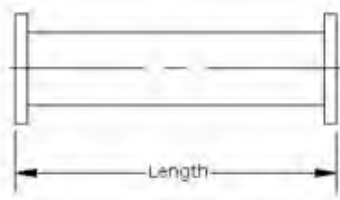
## General Specifications

Component	Flexible Twist
Waveguide Size	WR28   WG22   R320
Interface	PBR320
Interface 2	UBR320
Length	1000 mm   39 in

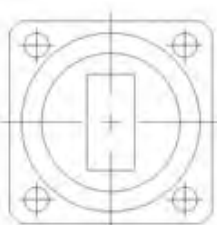
## Mechanical Specifications

Maximum Twist	510.00 °/m   155.00 °/ft
Minimum Bend Radius, Multiple Bends (E Plane)	38.00 mm   1.50 in
Minimum Bend Radius, Multiple Bends (H Plane)	76.00 mm   3.00 in
Pressurization, maximum	310 kPa   45 psi

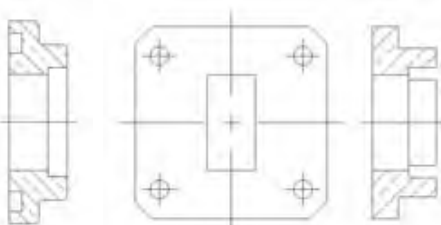
Component



Interface



Interface 2



## Regulatory Compliance/Certifications

### Agency

RoHS 2011/65/EU  
China RoHS SJ/T 11364-2006  
ISO 9001:2008

### Classification

Compliant by Exemption  
Above Maximum Concentration Value (MCV)  
Designed, manufactured and/or distributed under this quality management system

# Product Specifications

COMMScope®

F028KMA4

POWERED BY

