



F034KKS4
FlexTwist™ Flexible Twist for WR34, 22.0–33.0 GHz, with interface types PBR260 and PBR260, 1000 mm

Electrical Specifications

Operating Frequency Band	22.0 – 33.0 GHz
Attenuation	0.90 db/ft 2.95 db/m
Average Power	75 W
Peak Power	20.0 kW
VSWR	1.25

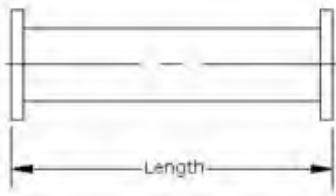
General Specifications

Component	Flexible Twist
Waveguide Size	WR34 WG21 R260
Interface	PBR260
Interface 2	PBR260
Length	1000 mm 39 in

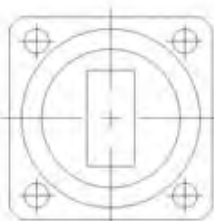
Mechanical Specifications

Maximum Twist	510.00 °/m 155.00 °/ft
Minimum Bend Radius, Multiple Bends (E Plane)	38.00 mm 1.50 in
Minimum Bend Radius, Multiple Bends (H Plane)	76.00 mm 3.00 in
Pressurization, maximum	45 psi 310 kPa

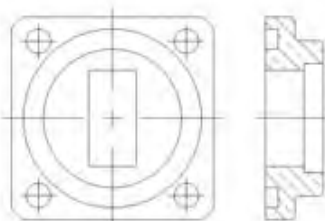
Component



Interface



Interface 2



Regulatory Compliance/Certifications

Agency

RoHS 2011/65/EU
China RoHS SJ/T 11364-2006
ISO 9001:2008

Classification

Compliant by Exemption
Above Maximum Concentration Value (MCV)
Designed, manufactured and/or distributed under this quality management system

Product Specifications

COMMScope®

F034KKS4



POWERED BY

