



F042ABS1

Flexible Twist for WR42, 17.7–26.5 GHz, with interface types UG-596A/U and UG-595/U, 300 mm

Electrical Specifications

Operating Frequency Band	17.7 – 26.5 GHz
Attenuation	0.80 db/ft 2.62 db/m
Average Power	100 W
Peak Power	39.0 kW
VSWR	1.20

General Specifications

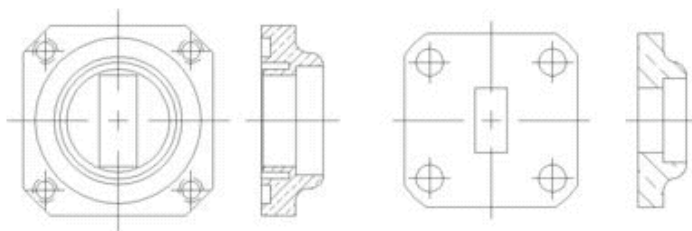
Component	Flexible Twist
Waveguide Size	WR42 WG20 R220
Interface	UG-596A/U
Interface 2	UG-595/U
Length	300 mm 12 in

Mechanical Specifications

Maximum Twist	510.00 °/m 155.00 °/ft
Minimum Bend Radius, Multiple Bends (E Plane)	38.00 mm 1.50 in
Minimum Bend Radius, Multiple Bends (H Plane)	76.00 mm 3.00 in
Pressurization, maximum	45 psi 310 kPa

Component Interface

Interface 2



Regulatory Compliance/Certifications

Agency

RoHS 2002/95/EC
China RoHS SJ/T 11364-2006
ISO 9001:2008


Classification

Compliant by Exemption
Above Maximum Concentration Value (MCV)
Designed, manufactured and/or distributed under this quality management system

Product Specifications

COMMScope®

F042ABS1

 on the go

