



F062HHS3  
**FlexTwist™ Flexible Twist for WR62, 12.4–18.0 GHz, with interface types PDR140 and PDR140, 900 mm**

## Electrical Specifications

Operating Frequency Band	12.4 – 18.0 GHz
Attenuation	0.30 db/ft   0.99 db/m
Average Power	400 W
Peak Power	100.0 kW
VSWR	1.10

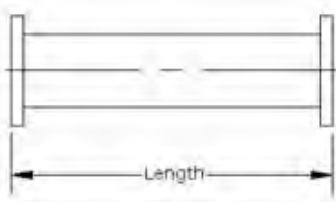
## General Specifications

Component	Flexible Twist
Waveguide Size	WR62   WG18   R140
Interface	PDR140
Interface 2	PDR140
Length	900 mm   35 in

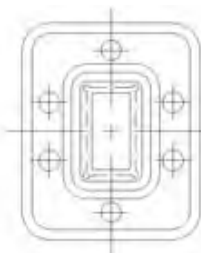
## Mechanical Specifications

Maximum Twist	445.00 °/m   135.00 °/ft
Minimum Bend Radius, Multiple Bends (E Plane)	52.00 mm   2.00 in
Minimum Bend Radius, Multiple Bends (H Plane)	102.00 mm   4.00 in
Pressurization, maximum	45 psi   310 kPa

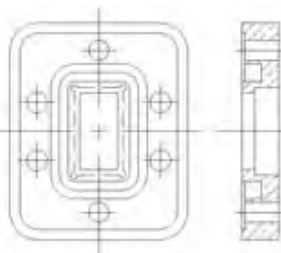
### Component



### Interface



### Interface 2



## Regulatory Compliance/Certifications

### Agency

RoHS 2011/65/EU  
China RoHS SJ/T 11364-2006  
ISO 9001:2008

### Classification

Compliant by Exemption  
Above Maximum Concentration Value (MCV)  
Designed, manufactured and/or distributed under this quality management system

# Product Specifications

COMMScope®

F062HHS3

POWERED BY

