



F075BBS5  
**FlexTwist™ Flexible Twist for WR75, 10.0–15.0 GHz, with interface types MIL-F-3922/70-016 and MIL-F-3922/70-016, 1200 mm**

## Electrical Specifications

Operating Frequency Band	10.0 – 15.0 GHz
Attenuation	0.18 db/ft   0.59 db/m
Average Power	750 W
Peak Power	140.0 kW
VSWR	1.13

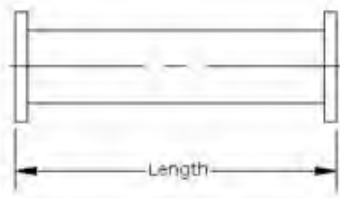
## General Specifications

Component	Flexible Twist
Waveguide Size	WR75   WG17   R120
Interface	MIL-F-3922/70-016
Interface 2	MIL-F-3922/70-016
Length	1200 mm   47 in

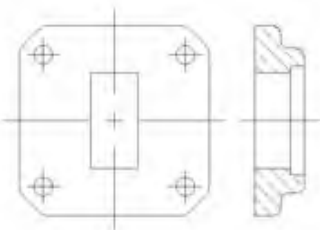
## Mechanical Specifications

Maximum Twist	360.00 °/m   110.00 °/ft
Minimum Bend Radius, Multiple Bends (E Plane)	64.00 mm   2.50 in
Minimum Bend Radius, Multiple Bends (H Plane)	115.00 mm   4.50 in
Pressurization, maximum	45 psi   310 kPa

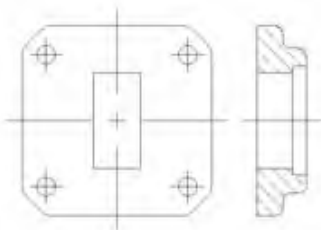
### Component



### Interface



### Interface 2



## Regulatory Compliance/Certifications

<b>Agency</b> RoHS 2011/65/EU China RoHS SJ/T 11364-2006 ISO 9001:2008	<b>Classification</b> Compliant by Exemption Above Maximum Concentration Value (MCV) Designed, manufactured and/or distributed under this quality management system
---	--

# Product Specifications

COMMScope®

F075BBS5

POWERED BY

