

F075KHS3  
**FlexTwist™ Flexible Twist for WR75, 10.0–15.0 GHz, with interface types PBR120 and PDR120, 900 mm**

## Electrical Specifications

Operating Frequency Band	10.0 – 15.0 GHz
Attenuation	0.18 db/ft   0.59 db/m
Average Power	750 W
Peak Power	140.0 kW
VSWR	1.10

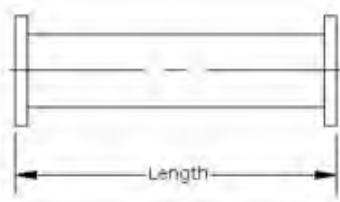
## General Specifications

Component	Flexible Twist
Waveguide Size	WR75   WG17   R120
Interface	PBR120
Interface 2	PDR120
Length	900 mm   35 in

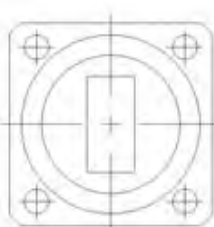
## Mechanical Specifications

Maximum Twist	360.00 °/m   110.00 °/ft
Minimum Bend Radius, Multiple Bends (E Plane)	64.00 mm   2.50 in
Minimum Bend Radius, Multiple Bends (H Plane)	115.00 mm   4.50 in
Pressurization, maximum	45 psi   310 kPa

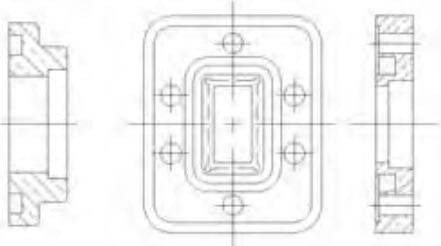
Component



Interface



Interface 2



## Regulatory Compliance/Certifications

Agency	Classification
ISO 9001:2008	Designed, manufactured and/or distributed under this quality management system