



F090HHS4
FlexTwist™ Flexible Twist for WR90, 8.2–12.4 GHz, with interface types PDR100 and PDR100, 1000 mm

Electrical Specifications

Operating Frequency Band	8.2 – 12.4 GHz
Attenuation	0.13 db/ft 0.43 db/m
Average Power	960 W
Peak Power	180.0 kW
VSWR	1.13

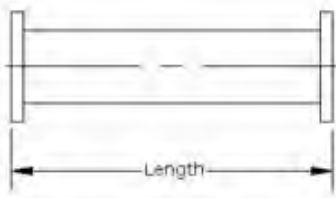
General Specifications

Component	Flexible Twist
Waveguide Size	WR90 WG16 R100
Interface	PDR100
Interface 2	PDR100
Length	1000 mm 39 in

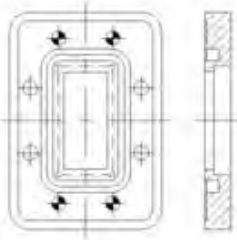
Mechanical Specifications

Maximum Twist	310.00 °/m 95.00 °/ft
Minimum Bend Radius, Multiple Bends (E Plane)	64.00 mm 2.50 in
Minimum Bend Radius, Multiple Bends (H Plane)	127.00 mm 5.00 in
Pressurization, maximum	45 psi 310 kPa

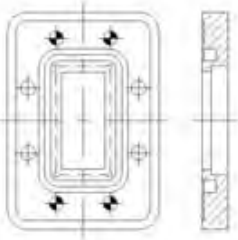
Component



Interface



Interface 2



Regulatory Compliance/Certifications

Agency RoHS 2011/65/EU China RoHS SJ/T 11364-2006 ISO 9001:2008	Classification Compliant by Exemption Above Maximum Concentration Value (MCV) Designed, manufactured and/or distributed under this quality management system
---------------------------------------------------------------------------------	------------------------------------------------------------------------------------------------------------------------------------------------------------------------------

Product Specifications

COMMScope®

F090HHS4

POWERED BY

