



F090HLB4  
**FlexTwist™ Flexible Twist for WR90, 10.7–11.7 GHz, with interface types PDR100 and UDR100, 1000 mm**

## Electrical Specifications

Operating Frequency Band	10.7 – 11.7 GHz
Attenuation	0.13 db/ft   0.43 db/m
Average Power	960 W
Peak Power	180.0 kW
VSWR	1.05

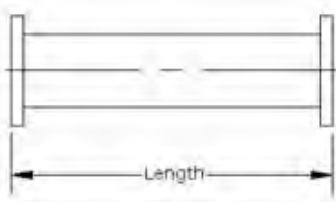
## General Specifications

Component	Flexible Twist
Waveguide Size	WR90   WG16   R100
Interface	PDR100
Interface 2	UDR100
Length	1000 mm   39 in

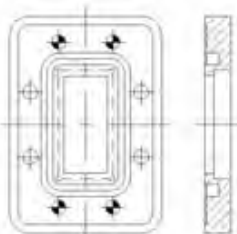
## Mechanical Specifications

Maximum Twist	310.00 °/m   95.00 °/ft
Minimum Bend Radius, Multiple Bends (E Plane)	64.00 mm   2.50 in
Minimum Bend Radius, Multiple Bends (H Plane)	127.00 mm   5.00 in
Pressurization, maximum	45 psi   310 kPa

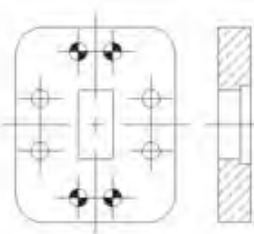
### Component



### Interface



### Interface 2



## Regulatory Compliance/Certifications

### Agency

RoHS 2011/65/EU  
China RoHS SJ/T 11364-2006  
ISO 9001:2008

### Classification

Compliant by Exemption  
Above Maximum Concentration Value (MCV)  
Designed, manufactured and/or distributed under this quality management system

# Product Specifications

COMMScope®

F090HLB4

POWERED BY

