



F112CCC1
FlexTwist™ Flexible Twist for WR112, 7.125–8.5 GHz, with interface types CPR112G and CPR112G, 300 mm

Electrical Specifications

Operating Frequency Band	7.125 – 8.5 GHz
Attenuation	0.40 db/m 0.12 db/ft
Average Power	1260 W
Peak Power	315.0 kW
VSWR	1.04

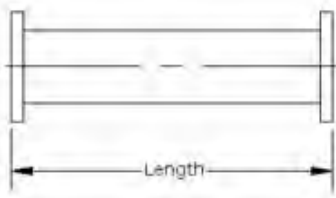
General Specifications

Component	Flexible Twist
Waveguide Size	WR112 WG15 R84
Interface	CPR112G
Interface 2	CPR112G
Length	300 mm 12 in

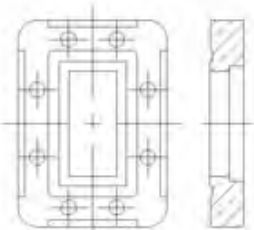
Mechanical Specifications

Maximum Twist	264.00 °/m 80.00 °/ft
Minimum Bend Radius, Multiple Bends (E Plane)	76.00 mm 3.00 in
Minimum Bend Radius, Multiple Bends (H Plane)	152.00 mm 6.00 in
Pressurization, maximum	35 psi 240 kPa

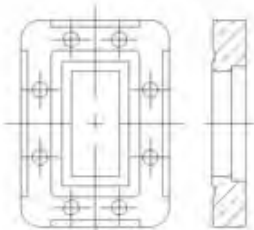
Component



Interface



Interface 2



Regulatory Compliance/Certifications

Agency RoHS 2011/65/EU China RoHS SJ/T 11364-2006 ISO 9001:2008	Classification Compliant by Exemption Above Maximum Concentration Value (MCV) Designed, manufactured and/or distributed under this quality management system
---	--

Product Specifications

COMMScope®

F112CCC1

POWERED BY

