



F112CMC5
FlexTwist™ Flexible Twist for WR112, 7.125–8.5 GHz, with interface types CPR112G and UBR84, 1200 mm

Electrical Specifications

Operating Frequency Band	7.125 – 8.5 GHz
Attenuation	0.40 db/m 0.12 db/ft
Average Power	1260 W
Peak Power	315.0 kW
VSWR	1.05

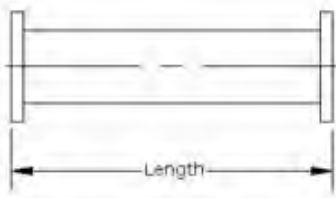
General Specifications

Component	Flexible Twist
Waveguide Size	WR112 WG15 R84
Interface	CPR112G
Interface 2	UBR84
Length	1200 mm 47 in

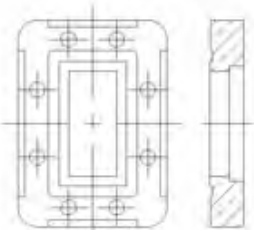
Mechanical Specifications

Maximum Twist	264.00 °/m 80.00 °/ft
Minimum Bend Radius, Multiple Bends (E Plane)	76.00 mm 3.00 in
Minimum Bend Radius, Multiple Bends (H Plane)	152.00 mm 6.00 in
Pressurization, maximum	35 psi 240 kPa

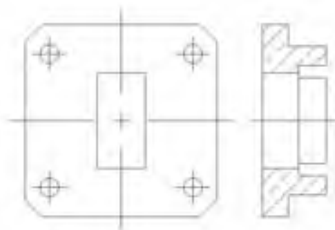
Component



Interface



Interface 2



Regulatory Compliance/Certifications

Agency

RoHS 2011/65/EU
China RoHS SJ/T 11364-2006
ISO 9001:2008

Classification

Compliant by Exemption
Above Maximum Concentration Value (MCV)
Designed, manufactured and/or distributed under this quality management system

Product Specifications

COMMScope®

F112CMC5

POWERED BY

