

RACK SHELF: 2 POINT RACK MOUNTING

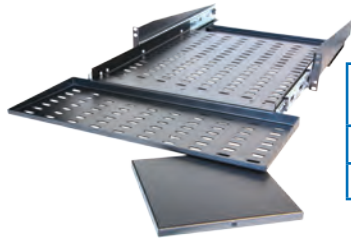
Retractable w/keyboard, Retractable w/pivoting keyboard, and Folding keyboard

Features:

- Heavy gauge steel
- 2-point rack mounting
- Return bends for strength
- Perforated for ventilation, mounting servers, cable ties, and accessories
- Durable textured powder coated finish
- Standard colour is all black

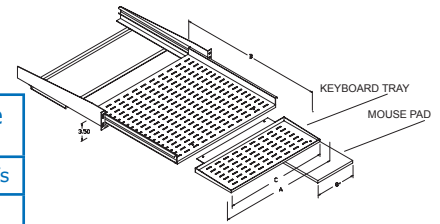
Highlights:

- All retractable shelves feature heavy duty full extension drawer slides

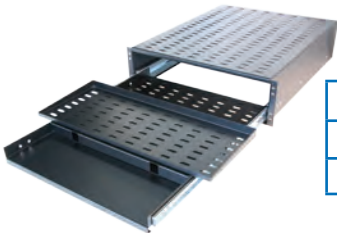


Retractable with keyboard shelf & mouse pad surface
(100LB load capacity)

	PART #	A	B	C	# of U's
19" EIA MOUNT	RFM-1928-RKS	16.50	28.50	20.38	2U

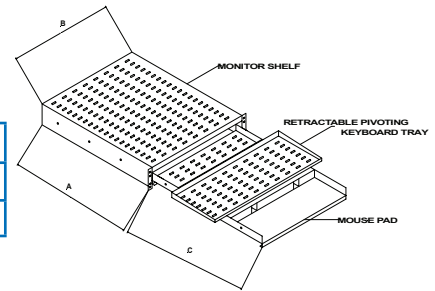


Retractable with keyboard shelf & pivoting mouse pad surface



Retractable with pivoting keyboard shelf

	PART #	A	B	C	# of U's
19" EIA MOUNT	RFM-1922-RPKS	22.00	19.00	22.00	3U



Retractable with pivoting keyboard shelf



Fold-up keyboard shelf & pivoting mouse pad surface

Folding keyboard tray & mouse pad surface

	PART #	A	B	C
19" EIA MOUNT	RFM-FKBA-19	19.25	8.00	8.00

