



Adaptability

The coupler housing is a perfect solution for temporary and flexible work areas where single port drops are needed.



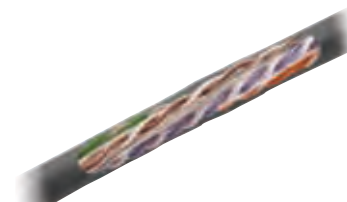
Durability

HI-Impact shell provides the ultimate protection your harsh environment demands.



Performance

All Assemblies are 100% performance tested to the latest standard for Category rated performance (6 and 5e).



Flexibility

The patch cords are available in a large variety of lengths and styles to accommodate the various applications and combinations requested.



- Patch Cords Deliver Unmatched Transmission Performance
- Field-Terminable Cords and Connectors Allow Installation and Configuration On-Site
- Supports Different Media Types: Voice/Data/Video
- Patch Cords are Made to Custom Lengths with Reusable Housings

HI-Impact Patch Cord Assembly Chart

AE	AA	EE
A	A	E
E	A	E

Specifications

- HI-Impact housing temperature range: -25°C to 70°C
- HI-Impact housing: Valox®, UL 94V-0

Standards/Listings/Verifications

- TIA-568-C.2 Category 6 and 5e component
- IEEE 802.3AT PoE+ (DTE Power)
- Ingress protection: IP67 (dust/water)



HI-Impact Patch Cords

Description	Catalog No.
HI-Impact Category 6 RJ-45 to standard RJ-45	HI6yyAE
HI-Impact Category 6 RJ-45 on both ends	HI6yyEE
Standard Category 6 RJ-45 on both ends	HI6yyAA
HI-Impact Category 6 plug connector, UTP	HI6P
HI-Impact Category 6 plug, 25-pk, RJ45 UTP stranded	HIP625
HI-Impact RJ45 plug boot, 25-pk, Black	HICB25BK
HI-Impact Category 6 bulk patch cable, 100'	HIPC6100
HI-Impact coupler housing, connectors not included	HICH

Substitute "yy" with 03, 05, 07, 10, 15, 20, 25, 30, 35, 40, 45, 50 to indicate length in feet.

Valox® is a trademark of SABIC Innovative Plastics.

