

Fire-Lite® Alarms by Honeywell

BG-12LA Manual Pull Station

Patented, U.S. Patent No. Des. 428,351; 6,380,846; Other Patents Pending

Document 51381

156-2267-003

Description

The BG-12LA pull station is a non-coded, dual-action manual pull station with a key-lock reset feature. It provides Fire•Lite control panels with one normally open (N/O) alarm initiating input. A second set of contacts is rated up to 3 Amps at 30 V (AC or DC) for auxiliary functions. The BG-12LA meets the ADAAG controls and operating mechanisms guidelines (section 4.1.3[13]), and the ADA requirement for a 5 lb. maximum pull force to activate the pull station. Operating instructions are molded into the pull station handle along with Braille text. Molded Terminal numbers are also present.

Ratings

FACP Circuit (Terminals 1 & 2):
Rated to .25 Amp at 30 Volts (AC or DC).
Auxiliary Contact Circuit (Terminals 3 & 4):
Rated to 3 Amps at 30 Volts (AC or DC).

Installation

The BG-12LA pull station can be surface mounted to an SB-10 or SB-I/O surface backbox or semi-flush mounted on a standard single-gang, double-gang or 4" (10.16 cm) square electrical box. The optional BG-TR trim ring can be used if the BG-12LA is to be semi-flush mounted.

Operation

To activate the dual-action pull station, push in and pull down on the handle. The word 'ACTIVATED' appears after the handle is pulled down. This will remain until the pull station is reset.

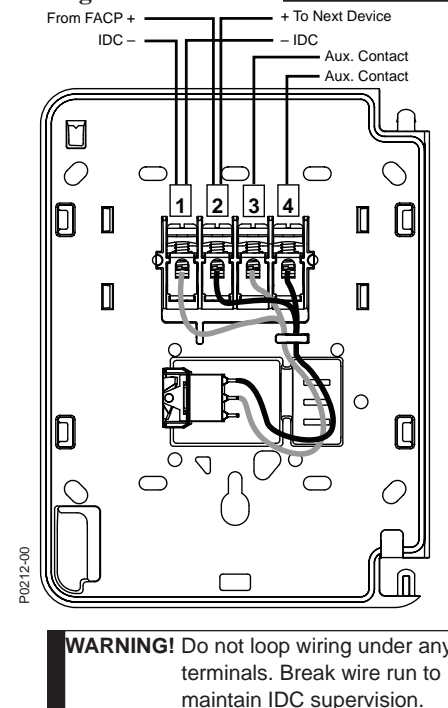
The pull station includes one Double Pole, Double Throw (DPDT) Normally Open (N/O) switch which closes upon activation of the pull station.

Resetting the Pull Station

1. Insert the key into the lock and rotate 1/4 turn counterclockwise.
2. Open the door until the handle returns to normal.
3. Close and lock the door.

NOTE: Closing the door automatically resets the switch to the 'Normal' position. Opening the door will not activate or deactivate the alarm switch.

Wiring



BG-12LA Manual Pull Station

Document 51381

156-2267-003



CAUTION! Do not detach the door of the pull station during installation. The door of the pull station cannot be reattached to the backplate after the backplate has already been installed onto an electrical box.

CAUTION!

Install the Fire•Lite BG-12LA pull station in accordance with these instructions, applicable NFPA standards, national and local Fire and Electrical codes and the requirements of the AHJ (Authority Having Jurisdiction). Regular testing of the devices should be conducted in accordance with the appropriate NFPA standards. Failure to follow these directions may result in failure of the device to report an alarm condition. Fire•Lite is not responsible for devices that have been improperly installed, tested or maintained.

ADA Compliance

For ADA compliance, if the clear floor space only allows forward approach to an object, the maximum forward reach height allowed is 48 inches (121.92 cm). If the clear floor space allows parallel approach by a person in a wheelchair, the maximum side reach allowed is 54 inches (137.16 cm).