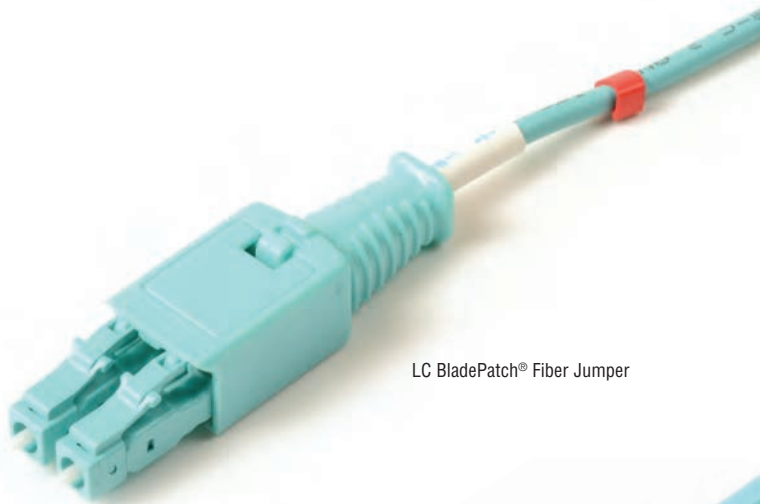
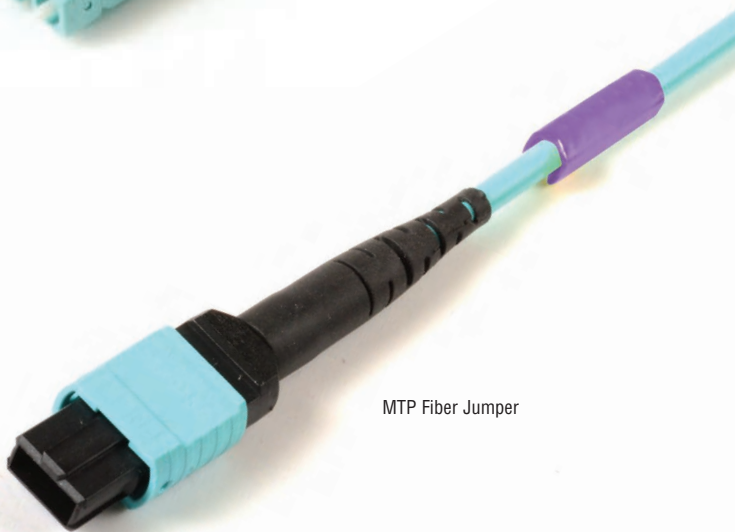


## Color-Coded Cable Clips

Simon's color-coded cable clips are designed to be highly visible, have a secure fit to the cable and easily field attachable to a variety of Simon copper and fiber cables. With 8 available colors to choose from, these color-coded cable clips provide system administrators the ability to customize their cables to clearly differentiate and identify various networks.



LC BladePatch® Fiber Jumper



MTP Fiber Jumper



Highly Visible and available in 8 Colors



Barbs provide secure fit to cable

### APPLICATIONS

- SFP+ and QSFP+ DAC cables
- Category Copper cables
- LC, SC and MTP Fiber jumpers

### STANDARDS COMPLIANCE

- Directive 2011/65/EU (RoHS 2)
- UL 94 V-0



LC Duplex Fiber Jumper



SFP+ Copper Cable



MC5® Category Copper Cable

# Product Information

## PRODUCT SPECIFICATIONS

Material	PVC
Temperature Range	-30° C to +60° C (-22° F to +140° F)
Flammability Rating	UL 94-V0
UV Resistant	Yes
Length	CLIP-CBL-30-XX = 3mm (0.12 in.) All others = 15mm (0.59 in.)

## CABLE FIT INFORMATION

Part Number	Cable Min - Max OD	Fits Siemon DAC Cables	Fits Siemon Category Copper Patch Cords	Fits Siemon LC, SC and MTP Fiber Jumpers
CLIP-CBL-30-XX	2.4-3mm 0.094-0.118 in.	—	—	1.8mm LC jumper assembly LC BladePatch® jumper
CLIP-CBL-40-XX	3-4mm 0.118-0.157 in.	—	28 AWG category 6 stranded cords & all stranded 1-pair cords (TERA® or S110® cords)	3mm SC/ST simplex jumper FR12 MTP to MTP assembly
CLIP-CBL-50-XX	4-5mm 0.157-0.197 in.	28 and 30AWG SFP+ 28 and 30AWG QSFP+ to 4 SFP+ Breakouts	24 AWG solid IC5 cords, 26 AWG stranded cords (category 6 and lower)	FS24 MTP to MTP fiber core assembly LC jumper assembly
CLIP-CBL-62-XX	5-6.2mm 0.197-0.244 in.	24 and 26AWG SFP+ 24 and 26AWG QSFP+ to 4 SFP+ Breakouts	23 AWG solid IC6 cords, 24 AWG stranded cords (BladePatch, S110, S210®), 26 AWG S/FTP stranded cords (Z-MAX®, BladePatch, TERA)	LC jumper (boot) SC jumper (boot)
CLIP-CBL-72-XX	6.2-7.2mm 0.244-0.283 in.	28 and 30AWG QSFP+	—	—

## Ordering Information:

Part Number	Description (includes maximum cable OD)
CLIP-CBL-30-(XX)	Color-coded cable clip, 3mm (0.12 in.), bag of 25 clips
CLIP-CBL-40-(XX)	Color-coded cable clip, 4mm (0.16 in.), bag of 25 clips
CLIP-CBL-50-(XX)	Color-coded cable clip, 5mm (0.20 in.), bag of 25 clips
CLIP-CBL-62-(XX)	Color-coded cable clip, 6.2mm (0.24 in.), bag of 25 clips
CLIP-CBL-72-(XX)	Color-coded cable clip, 7.2mm (0.28 in.), bag of 25 clips

Use (XX) to specify color: 02=white, 03=red, 04=gray, 05=yellow, 06=blue, 07=green, 08=violet, 09=orange

Siemon also offers CLIP-(XX) for use with our MC 6 patch cords, Z-MAX patch cords and TERA 4-pair patch cords.

Note: Because we continuously improve our products, Siemon reserves the right to change specifications and availability without prior notice.

## FOR ADDITIONAL RESOURCE INFORMATION:

Visit our web site at [www.siemon.com/SIS](http://www.siemon.com/SIS)

## SIEMON INTERCONNECT SOLUTIONS

Watertown, CT USA

Phone (1) 860 945-4213

E-Mail - Customer Service. - [SIS\\_customerservice@siemon.com](mailto:SIS_customerservice@siemon.com)

E-Mail - Technical Support. - [SIS\\_techsupport@siemon.com](mailto:SIS_techsupport@siemon.com)



CLIP-CBL-30-(XX)



CLIP-CBL-40-(XX)

CLIP-CBL-50-(XX)

CLIP-CBL-62-(XX)

CLIP-CBL-72-(XX)

