

# Horizontal Cable Managers

The Siemon Company offers a complete range of 19 inch horizontal cable management products for proper routing of copper patch cords, cross-connect wires or fiber jumpers. Each manager has been designed to maximize the quantity of cables within the space requirements. A wide range of designs and sizes are available to accommodate any patching environment.



## Multi-Access Horizontal Cable Manager



Single cover provides an easy method for keeping patch cord bundles out of sight for improved aesthetics

Slots located on rear of manager are designed for use with hook and loop managers for rear cable management

Large areas, with rounded edges, for cables to enter/exit managers

Unique design allows easy insertion of additional patch cords while retaining existing cords

## S110®/S210® Cable Manager



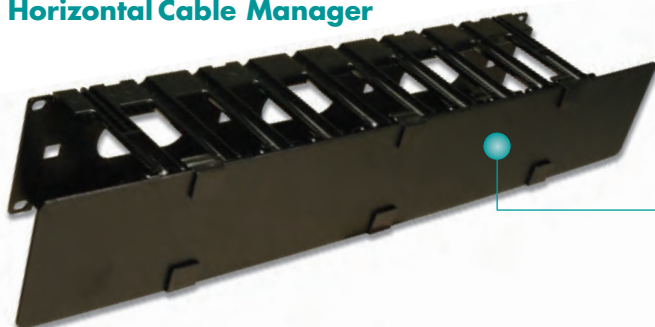
Color matched covers included with all 19 inch S110®/S210® managers provide a clean installation

## WM Series Cable Manager

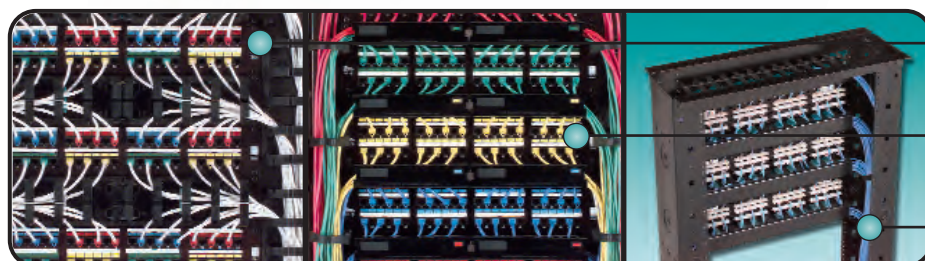


Standard managers have top cable access to enable full utilization of capacity

## RS Series Horizontal Cable Manager



Designed for use with Siemon's RS Series Rack and Vertical Patching Channel. Hinged cover extends across the vertical channels to fully conceal patch cords in the VPC



Vertical cable management enables easy, quick addition and removal of patch cords while effectively retaining them through the channel

When mounted on a 19 inch rack-mount panel our S110/S210 cable managers provide superior cable management in a compact space

The double-side multi-access cable manager provides cable management for both front and rear of the rack and includes removable cover

# Ordering Information

## WM Series Rack Mount Cable Managers:

The WM series cable managers provide increased strength and to eliminate interference with panels mounted above or below. They are an economical solution for providing a clean and simple means of organizing small-to-large bundles of cables and patch cords.



WM-143-5.....Five S143  
hangers, 1U



WM-144-5.....Five S144  
hangers, 2U



WM-145-5.....Five S145  
hangers, 2U

## Multi-access Horizontal Cable Managers:

The multi-access horizontal cable manager design provides cable management for both the front and rear of the rack, is compact in size (1 RMS). The managers feature high capacity slots for entering and exiting cables with a single piece removable cover.



RWM-1 .....Single-sided horizontal, with cover,1U



RWM-1DS.....Double-sided horizontal, with covers,1U

## 19 inch S110®/S210® Cable Managers:

When mounted on a 19 inch panel for rack installation, our S110-RWM and S110-RWM2 cable managers provide superior cable management in a compact space. Covers are included with the cable managers to provide a clean patching environment.



S110-RWM-01 .....1U, with covers, black



S110-RWM2-01 .....2U, with covers

## RS Series Horizontal Cable Managers:

Designed for use with Siemon's RS Series Rack and Vertical Patching Channels.



RS3-RWM-1\* .....Single Sided 19" cable manager, 1U,  
dual hinged/removable cover



RS3-RWM(X)-2\* .....Single Sided 19" cable manager, 2U,  
dual hinged/removable cover

RS3-RWM(X)-4 .....Single Sided 19" cable manager, 4U,  
dual hinged/removable cover

Use (X) to specify finger length:

Blank = 4" (101.4mm) fingers, for use with VP1 or VP2 cabinets

6 = 6" (152.4mm) fingers, for use with VP2 cabinets only

Because we continuously improve our products, Siemon reserves the right to change specifications and availability without prior notice.  
S110® and S210® are trademarks of Siemon

Note: 1U = 44.5mm (1.75 in.)

### North America

Watertown, CT USA  
Phone (1) 860 945 4200 US  
Phone (1) 888 425 6165 Canada

### Europe/Middle East/Africa

Surrey, England  
Phone (44) 0 1932 571771

### Asia/Pacific

Shanghai, P.R. China  
Phone (86) 21 5385 0303

### Latin America

Bogota, Colombia  
Phone (571) 657 1950