

## Splice Insulators & Insulating Covers

Shrink-Kon®



### Quick-Seal Multi-Splice Insulators

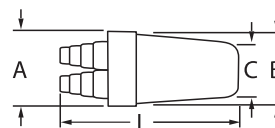
- Fast and easy to use
- Reusable insulator snaps closed and can be opened for inspection
- 600V at 90° C

All-purpose quick-seal multi-splice can be used wherever a watertight insulator is needed in motor junction boxes, manholes, street lighting, bridges, machines, rooftop air conditioning, airport lighting, as well as in marine use. The insulator is a two-piece design, an abrasion-resistant elastomer cable entry boot and a high impact-resistant thermoplastic quick-seal cap. Installs in seconds, completely waterproof, long-lasting, reusable, inspectable, flame-retardant, impact-resistant, range-taking, inexpensive, and totally dependable.

#### ..... Specifications .....

##### Material

- Cap: NORYL, U.L. 94V-1\
- Boot: EPDM Elastomer, UL 94V-2
- Lubricant Silicone Grease



### Quick-Seal Splice Insulators

CAT. NO.	WIRE RANGE	INSULATION O.D. RANGE (IN.)	LENGTH L (IN.)	DIA. A (IN.)	DIA. B (IN.)	DIA. C (IN.)	BOLT SIZE MAX. DIA.	CONN. SIZE MAX. LG.	MAX. LG.	MAX. WD.	STD. PKG. QTY.
MSLT 8	14-8	.15-.28	2.625	1.22	1.03	.813	.25	.50	1.25	.50	10
MSLT 1	6-1	.20-.52	3.625	1.81	1.53	1.25	.38	.75	1.75	.70	5

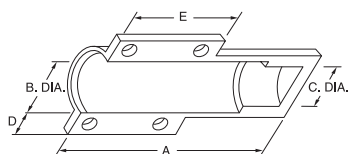
\*Order multiple is std. pkg.



### Motor Stub Splice Insulators

- Re-enterable motor stub insulator
- Easy installation
- No special tools required

This innovative product has been designed to insulate motor stub splices quickly, easily, and dependably. It consists of a boot-type insulator with integral TY-RAP® cable ties. To install, simply position the insulator over the bolted splice and tighten the cable ties. That's all there is to it. It produces uniform, high-quality installations every time... in about 30 seconds. The completed installation is immediately ready for inspection and use. If required, the insulator can be easily removed. Simply snip the cable ties and slide the insulator off the splice. It leaves no sticky residue.



#### ..... Specifications .....

- \*One Ty-Rap® cable tie only
- UL File E9809. UL and CSA Certified (94V-1 Flammability Class)
- Rated for 600V and 90° C application

##### Material

- Body: Modified Neoprene Elastomer
- Straps: Nylon

### Motor Stub Splice Insulators

CAT. NO.	WIRE RANGE	LENGTH (IN.)	BOLT MAX. A (IN.)	B DIA. (IN.)	C DIA. (IN.)	D (IN.)	E (IN.)	STD. PKG. QTY.
MSC14*	#14-#10	3.38	1.5	.56	.50	.38	.35	15
MSC8	#12-#8	3.38	2.39	.73	.67	.38	1.20	10
MSC2	#12-#2	.75	3.25	.95	.88	.38	1.5	10
MSC20	#2-2/0	1.5	4.25	1.39	1.05	.43	1.70	4
MSC250	3/0-300 MCM	1.5	7.56	1.88	1.80	.45	1.90	2
MSC500	350-500 MCM	1.75	8.88	2.56	2.48	.45	2.10	5

Order in multiples of std. pkg.

