



ADVANCED
TECHNOLOGY
VIDEO

IP PRODUCT SERIES

>>>3MP, TRIPLE STREAM, TRUE DAY/NIGHT,
WDR, IR, IP VANDAL DOME

IP VANDAL DOME IPVD3TI

- > Brilliant Video Quality with 3MP, 2048 x 1536 Resolution
- > Highly Efficient H.264 Video Compression which Drastically Reduces Bandwidth and Storage Requirements
- > Sony Exmor CMOS Sensor with Xarina DSP and Starvis Technology
- > Progressive Scanning for Sharper Video Motion Images
- > 2.8 - 12mm Vari-focal Auto-Iris Lens
- > Triple Video Streams Simultaneously up to 30-ips at 1536p Resolution, using H.264 and MJPEG Compression
- > TRUE Day/Night and Digital WDR for all Lighting Conditions
- > Onboard Storage Capability with Micro-SD Card Slot
- > Powerful IR LED Lights for 0Lux Night Time Operation up to 105 Feet
- > Backlight Compensation, 3D-DNR (Digital Noise Reduction) and Auto White Balance
- > Two-Way Audio, Powerful Video Analytic Functions and a Corridor / Aisle View Orientation Function
- > View and Record up to 64 Cameras and View and Manage an Unlimited Number of ATV NVR Units with Included ATVision IP Remote Management Software
- > ONVIF Profile S Compliant for Network Video Interoperability
- > IP66 Weather Resistant Rated and Impact Resistant Vandal Housing with a 3-Axis Gimbal
- > Optional Wall and Pendant Mounts Available
- > PoE & 12VDC Power Option Capability



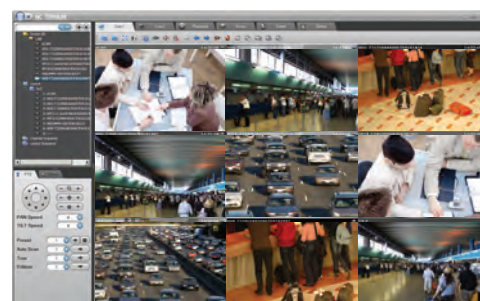
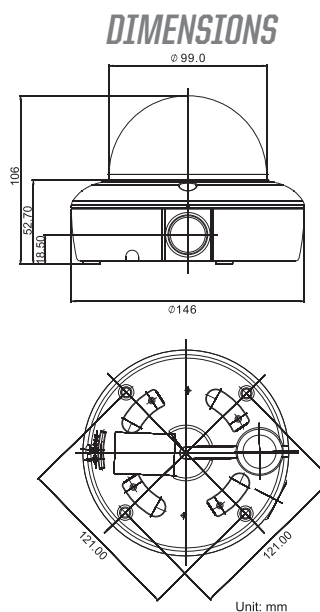
ONVIF | S

IP VANDAL DOME IPVD3TI

IP PRODUCT SERIES

SPECIFICATIONS

MODEL	IPVD3TI
C A M E R A	Image sensor
	Active Array
	Lens
	Angle of View
	IR Distance
	Min. Illumination
	Shutter Speed
	Day/Night
	WDR
	Scanning Mode
N E T W O R K	Noise Reduction
	BLC, AWB, Digital Zoom
	Image Effect
	Video Compression
	Video Resolutions
	Frame Rate
	Video Streaming
	Protocol
	Security
	Video Analytics
G E N E R A L	Max. User Connection
	Compatible 3rd Party VMS
	Event Notification
	Event Buffering
	Motion Detection
	Network Time Synchronization
	Micro-SD Card Recording
	Upgrade / Installation Tool
	Audio
	Alarm
	Micro-SD Card
	Ethernet
	Operating Temperature
	Operation Humidity
	Power Consumption
	Environmental Rating
	External Dimension (Dia x H)
	Unit Weight
	Conformity Certifications



ATVision IP Remote Management Software

* Maximum possible range in the best conditions. Actual experience may vary depending on the application and environmental conditions.

Minimum System Requirements for ATVision IP Software

- Operating System: Microsoft Windows 7 (or 8) Professional/Enterprise/Ultimate
- CPU: Intel Core i7; RAM: 4GB; Ethernet Connection: 1Gbps
- Graphics Card: Gaming Rated, with 1GB at 1080p for Single Monitor; 2GB at 1080p for Multiple Monitors
- HDD's: 7200RPM and 64MB Cache; 1 separate HDD for Operating System and Software; and 1 (2TB) HDD for Recording (refer to IP storage calculator)

ACCESSORIES

A-CM150	Corner Mount Adapter for the VDMWC
A-CM151	Pole Mount Adapter for the VDMWC
CV-FLUSHMT	Flush Mount
DB243W2	Wall Mount
PDA5W	Pendant Mount
VDMWC	Wall and Ceiling Mount

Advanced Technology Video | 850 Freeport Pkwy., Ste.100, Coppell, TX 75019
Toll Free 888.288.7644 | Main 972.459.8645 | Fax 972.459.8661

©2015 ATV All rights reserved. Specifications and Design are subject to change without notice.
ATV7650815-00

