



The 5200 Series is also available in a **Complete One Box Solution**

5200 Series

The grade 1 solution with horizontal adjustability

Shown with 501 Option

The 5200 series electric strikes feature an in-frame horizontal adjustable design to simplify the installation process. This feature allows the installer to easily adjust the electric strike opening to accommodate the horizontal position of the latchbolt after the strike has been installed. This field selectable fail secure/fail safe unit is easy to install and accommodates latchbolts up to 3/4" throw.



Specifications

- UL 1034, burglary-resistant listed
- UL 294 (6th Edition) listed
- ANSI/BHMA A156.31, Grade 1
- RoHS compliant
- Patent: 5,934,720

Electrical

- .24 Amps at 12 VDC/VAC
- .12 Amps at 24 VDC/VAC
- DC continuous duty/AC intermittent duty only
- PoE friendly

Frame Application

- Metal
- Wood

5200 Models

5200	Universal electric strike	Faceplate options ordered separately, see page 26
5200C	Complete electric strike	Includes the 501 and 501A faceplates
RF5210	Integrated Prox	Includes the strike body, Prox reader and door position switch
IC5220	Integrated iCLASS®	Includes the strike body, iCLASS reader and door position switch

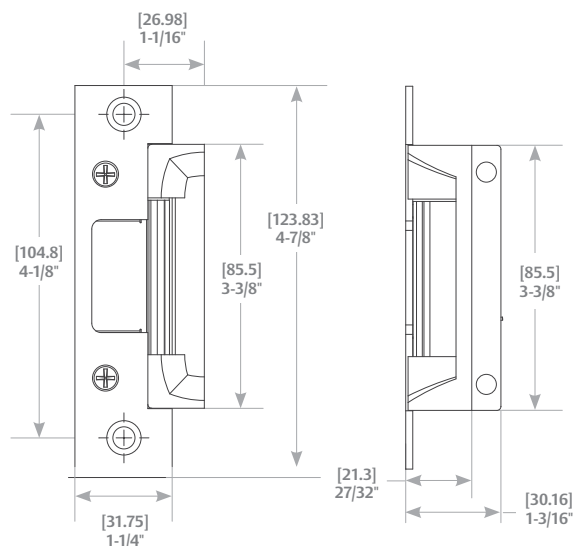


Diagram shown with 501 Option

Standard Features

- Tamper-resistant
- Static strength 1,500 lbs.
- Dynamic strength 70 ft-lbs.
- Endurance 500,000 cycles
- Field selectable fail secure/fail safe
- Dual-voltage 12 or 24 VDC/VAC
- In-frame horizontal adjustment
- Non-handed
- Internally mounted solenoid
- Accommodates 5/8" - 3/4" latchbolt (3/4" with 1/8" door gap)
- Strike body depth 1-3/16"
- Plug-in connector
- Trim enhancer included
- Five-year limited warranty

Optional Features

LBM » Latchbolt monitor

LBSM » Latchbolt strike monitor

Accessories

5200-500 » Filler block for retro-fit applications

150 » Strike latch guard

154-MTK » Metal template kit

2001M » Plug-in bridge rectifier

2004M » ElectroLynx® adapter

2005M3 » SMART Pac® III

2006M » Plug-in buzzer

5204-1/2 » 1/2" stackable lip extension

5204-1 » 1" stackable lip extension

5204-1-1/4 » 1-1/4" stackable lip extension

Finishes

630 » Satin stainless steel

605 » Bright brass

606 » Satin brass

612 » Satin bronze

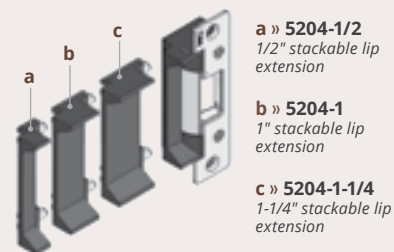
613 » Bronze toned

629 » Bright stainless steel

BLK » Black

**Complete Pacs are only available in the 630 finish*

"Press Fit" Stackable Lip Extensions



CYLINDRICAL
LOCKSETS



SPECIALTY
LOCKSETS



FIELD SELECTABLE
(12 OR 24VDC)



FIELD SELECTABLE
(FAIL SECURE/
FAIL SAFE)



GRADE 1



UL 1034
BURGLARY
LISTED

