

Linear eMerge E3-Series Access Control

Market Leading - Embedded Browser Access Control Platform



eMerge Essential & Elite | 1 to 200 Doors

Linear®

eMerge E3 Series

Access Control Made Easy

Affordable, Scalable, Browser-Based Access Control

The eMerge® E3-Series represents the next step in the evolution of Linear's access control platform, delivering faster set-up, enhanced features, and industry-leading scalability that outperforms the competition.

The E3-Series embedded browser-based network appliance platform makes advanced security technology reliable and affordable for any entry-level access control application. With tens of thousands of access control systems deployed in the field, and backed by decades of experience, Linear continues to deliver unprecedented value and innovation.

These full-featured, self-contained hardware/software access systems are perfect for commercial, industrial, banking, medical, retail, hospitality, and other businesses where users need to secure their facilities, manage access of personnel, create and analyze reports, and monitor the system from any web browser.

The E3-Series' comprehensive wizard is fast and intuitive, saving significant set-up time.

Both the Essential and Elite can be seamlessly scaled up, via software keys, providing increased door and reader capacity, enhanced features, and higher level capabilities. Linear's eMerge E3-Series makes expansion easy. The eMerge Essential and Elite set new standards of excellence for reliability, ease-of-use, expandability, best-in-class value and lowest cost of ownership.



**Experience E3! Fast, Intuitive,
Easy-To-Use**



Essential™ or Elite™ in Compact Case



Essential Plus™ or Elite™ in Metal Cabinet
(UL 294 Certified)



Supported Web Browsers



eMerge E3 Series

Not all Access Control Systems are Created Equal

The Linear E3-Series Advantage: Total Cost of Ownership (TCO)

Long-term, total cost of ownership of an eMerge E3 system is significantly lower than many similar systems. Users can realize significant cost reductions when compared to traditional access systems:

How eMerge E3-Series Lowers Your Total Cost:

- Faster to setup, simple to maintain
- Embedded Linux Operating System (OS)
 - MVP (Minimized Virus Potential)
 - No Microsoft update dependencies
- Independent network, server, and dedicated workstation hardware are not required
- Includes SQL database engine; no add-on database software licenses required
- No client licenses to load
- 100% solid state
- Common hardware reduces installer training and inventory cost
- Common software user interface means reduced training costs
- Open platform allows for cost-effective integration with other technologies

PC-based access servers fail, due to moving hard drives. Competitive models will typically require hard drive and server software replacement at least once over the life of their systems



The E3-Series browser-based access system saves time and money!

Software Feature Comparison

eMerge	Essential™	Elite™ (36-Doors)
Dashboard	●	●
Graphic floorplans	●	●
Card decoder	●	●
SQL database	●	●
First-in-unlock rule	●	●
Manager first rule	●	●
2-man rule	●	●
Portal unlock scheduling by time	●	●
Multiple holiday schedules	●	●
Multiple language support	●	●
Audit trail	●	●
Toggle/Passage	●	●
CSV file import tool	●	●
Built-in reports	●	●
One time events		●
Threat Level Management		
Alters access control system behavior globally		●
Threat levels		5
Network-secure API for external application integration		●
Distributed Redundant Database architecture (DRD)		●
User-definable fields	5	10
Maximum concurrent web users	8	16

eMerge E3 Series

Overview of System Features

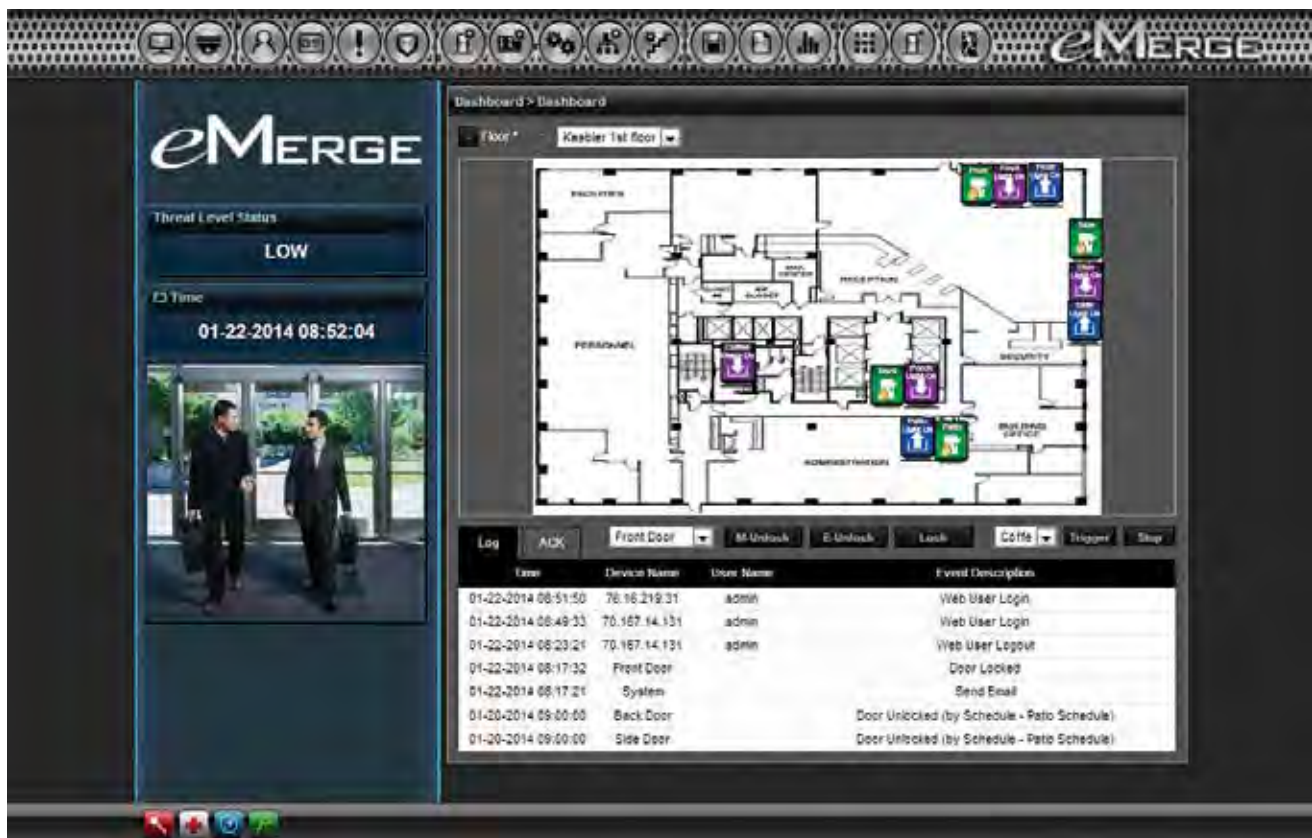
Essential

The entry-level eMerge Essential and Essential Plus supply the right amount of access control businesses need starting with 1-door / 2-reader capacity, plus immediate expansion capability to 4-doors / 8-readers (no additional hardware is needed to expand to 2, 3, 4, or more doors).

- *License-To-Go™* upgrade key provides more doors or video integration with Digital Watchdog™ VMAX-Series DVRs
- Essential: Housed in a compact plastic enclosure
- Essential Plus: Housed in a steel enclosure; includes supervised AC battery back-up
- Easily scalable via software upgrade keys to higher-capacity E3-Series eMerge Elite models
- UL 294 Certification (Plus and Standard model)

Elite

- Elite ships starting with door license; expandable up to 200-doors
- Includes Distributed Redundant Database (DRD) architecture
- More users, doors, readers, online transactions and overall capacity
- Advanced access control features & capabilities
- Centralized and/or distributed hardware
- Remote management-capable
- UL 294 Certification (Plus and Standard model)



eMerge E3 Series

Capabilities that Outshine Other Systems

Common Features

- Shared hardware and software architecture across all eMerge E3-Series
- Reliable, IT-friendly embedded Linux operating system
- SQL database with optional API available (Elite only)
- Intuitive quick-start wizard
- Browser-based management enables system status and updates from any place, on nearly any browser, using any operating system
- Easily upgradable to incorporate future E3 technology integrations
- UL 294 Certification (Standard and Plus models)

Hardware Features

- 100% solid state components
- High-speed, 1GHz processor handles multiple simultaneous users and more than 30 transactions per second
- Long-term event storage via micro-USB card
- Optional Power over Ethernet (PoE) available on all controllers, expansion nodes, and ACMs
- Controller and Expansion Node enclosure options:
 - Small footprint ruggedized plastic enclosure
 - Midsized metal enclosure with key lock includes 60 watt 12VDC power supply. Can accommodate an additional ACM (8 doors / 16 reader capacity)
 - All metal enclosures include supervised AC battery backup system

Software Features

- Optimized for use with iPhone, iPad, Android, tablets, and other mobile devices
- Dashboard displays full system status-at-a-glance including:
 - Event and activity log
 - Customizable door diagrams/floor plans with factory default templates
- Time-saving and convenient features:
 - Integrated card decoder tool
 - Dynamic event filtering
 - Built-in audit-trail
 - Automatic daily data backup
 - Built-in documentation library
 - CSV flat file database import and export
 - E-mail, text message notifications
 - Simple, easy-to-use predefined reports
 - Micro SD or FTP-based storage



E3 eMerge models are fully optimized for mobile devices

eMerge E3 Series

Ordering Guide

Enclosure

The model number determines the e3 eMerge system and options.

Order using these easy steps:

1 Select Module Type

ES - Essential model
EL36 - Elite-36 model
EXN - Expansion node
EV - Elevator module
ACM - Access Control Module

2 Select Module Door Capacity

- 1 - Essential 1-door model
- 2 - EXN expansion node w/2-door module capacity
- 4 - Essential 4-door model
- 4 - door EXN expansion node
- Elite model w/4-door module capacity

ES-1CB

3 Select Enclosure Type

C - Compact Plastic
M - Metal/Standard Size

4 Select Reader Bundle

B - Reader bundle matches module door capacity (1, 2, or 4)

No "B" at the end of the model number indicates no readers are included

Additional Options & Accessories

MODEL	DESCRIPTION
ACM Modules (to add into existing enclosures)	
ACM2D	2-Door ACM Module
ACM4D	4-Door ACM Module
ACMEV	Elevator ACM Module
ACM2DB	2-Door ACM Module w/2-Reader Bundle
ACM4DB	4-Door ACM Module w/4-Reader Bundle
License & Reader Combination Packages	
ES-1DL	Essential 1-door license
ES-1DLB	Essential 1-door license with 1-reader bundle
EL36-4CB	Elite-36 4-door system w/4-reader bundle, compact
EL36-4MB	Elite-36 4-door system w/4-reader bundle, metal
System Upgrade	
ES-U36	Essential upgrade to Elite 36-door system (ES-U36)
EL-U64	Upgrade license for Elite to 64-door capacity (EL-U64)
EL-U96	Elite 64 to Elite 96 upgrade
EL-U128	Elite 96 to Elite 128 upgrade
EL-U200	EL128-EL200 upgrade (Adds 5,000 users)
Extended Warranties	
E3-EW5	Extended 5-year warranty (per board)

MODEL	DESCRIPTION
Power Options	
E3-POE	PoE Module - adds PoE capability
PIP12VDCRU	Plug-in-Power Supply 12V DC 24 Watt
PIP12V60W	Plug-in-Power Supply 12V DC 60 Watt
B-12VDC7A	Battery - 12VDC 7 alignment - Battery AH
Proximity Readers	
2-N-1ProxHAF	Single Gang/Mullion Mount Multi-Technology Reader*
Cards & Key Fobs	
ProxCARD II	Wiegand 125 kHz Proximity Card*
ProxKey	Wiegand 125 kHz Proximity Key Fobs*
REX	
EZ-Rex	Easy Touch Request to Exit (Heavy Duty)
Elite-Series Expansion and Elevator Options	
EXN-xx or EXN-xxB	Door Expansion Nodes - multiple door qty., cabinet and reader bundle (xxB) options
EV-0C or EV-0M	Elevator Control Nodes – available in compact or metal cabinet options

*Works with certain HID 125 kHz formats and card readers from AWID, HID and Farpointe.

eMerge E3 Series

Specification Comparisons

eMerge	Essential™	Elite™
Processor	1GHz/All Models	
On-board RAM	512MB DDR2 (333MHz)	
Storage	4 GB Micro SD	8 GB Micro SD
Operating System	Embedded Linux	
Maximum Concurrent Administrators	8	16
Transactions Per Second Per Module	30+	
Doors/Portals	1 to 4	36-200*
Maximum Readers (in/out)	8	72-400*
Expansion Modules	N/A	36-192*
Elevator Control Modules	N/A	5 Cabs
Elevators/Cabs	N/A	5
Floors/Module	N/A	36
Elevator Groups/Module	N/A	16
Inputs	Up to 12	108-432*
Outputs	Up to 8	72-128*
Virtual Outputs	No	Yes
Maximum Users/Cardholders	1,000	5,000-10,000*
Access Cards	8,000	32,000-64,000*
Cards Per Person	12	32-120*
UL Certification	UL294 for Standard and Plus models	UL294 Series 6
Badging	No	Optional
Antipasspack	No	Timed
Card Types	Toggle, One Time, First In Manager, 2 Man Rule, Passage, Relock, Extended Unlock	
Scheduled Events/Outputs	No	Yes/50
Card Formats/Integrated Card Reader	32/Yes	
Total System Access Levels	25	250
Time Specs (schedules)	25	128
Holidays	30	60
Online Transactions	15,000	30,000
User Defined Data Fields	5	10
Threat Levels	N/A	5
Enclosure Dimensions		
Compact Plastic (W x H x D):	12.25 in x 11.1 in x 2.23 in (31.1 cm x 28.2 cm x 5.7 cm)	
Mid-sized Steel (W x H x D):	17.5 in x 14.25 in x 6.5 in (44.5 cm x 36.2 cm x 16.5 cm)	
Warranty	1 Year	

*Upgrade required. Additional SD memory required for maximum user capacity

For more information, please visit www.nortekcontrol.com.

Specifications subject to change without notice.

