

# Cylinder service equipment and tools



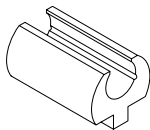
40-119



40-070

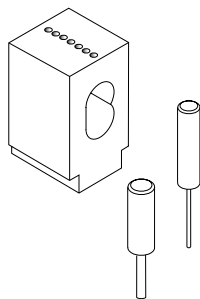
## Pin kits

40-119	For full size conventional cylinders Contains bottom, top and master pins, springs, cap pins, cap pin springs, caps, follower, tweezers, key gauge, shims, cap removal tool.
40-070	Primus XP finger pin kit Contains finger pins, sidebars, springs and plug holder.
40-129	SFIC wooden pin kit for A2 System Contains all pins and springs, key gauge, tweezers.



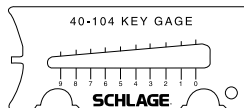
## Full size cylinder tools

40-066	Primus plug holder
40-116	Shell loading tool
M204-200	Pin tweezers
M540-056	Cylinder cap removal tool
M504-548	Modular follower bar



## Small format IC tools (included in 40-129 kit)

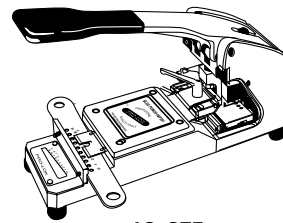
40-137	Capping block
40-136	Ejector tool
40-138	Capping tool



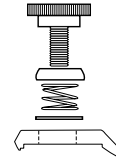
## Key gauge

40-104	Full size keys
40-128	A2 System SFIC keys

- Notes
1. Available 606 or 626 finish.
  2. Specify keyway to distinguish between Everest 29 and Classic. Example: C or CP (Classic) vs. S123 (Everest 29). Available in all full size keyways.
  3. Cylinders are only available 0-bitted.
  4. Not available for hotel function cylinders with occupancy indicator.
  5. Primus XP key blanks must be ordered separately. Conventional cylinders include two key blanks.



40-075



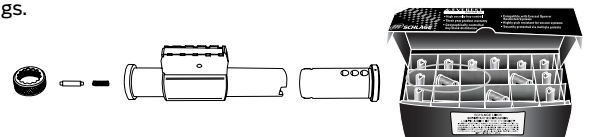
40-074

## Blue punch key machine

40-075	Classic Obverse, Everest C, and Everest 29 S Family keys only (Conventional and Primus XP)
40-071	Everest B Family small format IC keys and Everest 29 R Family small format IC keys only
40-074	Upgrade jaw kit adds Everest C Family and Everest 29 S Family capability Blue Punch machines with serial numbers below 990358, made before July 1999
40-099	Key biting punch for Everest D Family and Everest 29 T Family

## Bulk pack cylinder kit

Bulk packs are 10-packs that contain the components you need to quickly build 10 cylinders. All shells are pre-loaded with top pins and springs.



Classic conventional	Everest 29 conventional	Primus XP	Description
09-409	09-751	09-764	Key-in-knob / lever
09-412	09-754	09-767	Mortise (specify length)
09-410	09-752	09-765	Rim
09-411	09-753	09-766	Full size interchangeable core

Specify keyway and finish.

Keys and tailpieces/cams must be ordered separately.

## Multiple tailpiece cylinders

Reduce cylinder inventory by stocking these cylinders packed with tailpieces to fit these locks:

- A-Series (all designs)
- AL Series
- D Series knobs
- D Series levers
- H Series knobs (all designs)
- ND Series levers

40-100	Conventional
40-700	Primus XP
40-500	Primus XP UL

