



**Catalog Number:** UA4667-XT-9527  
**Item Description:** 480A CONT/600A MAX 7T OU  
**UPC Code:** 784572300637

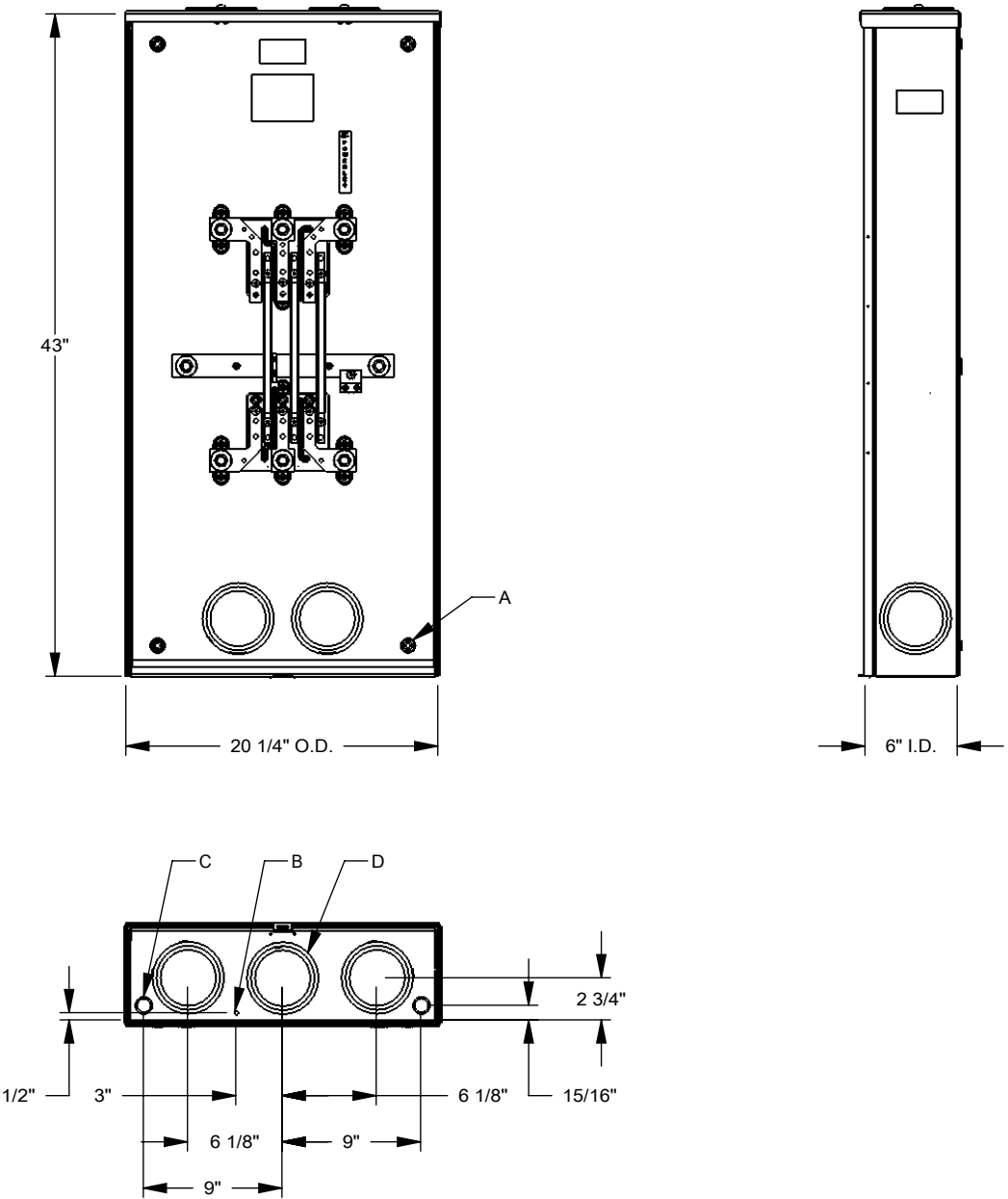
**Brand Name:** Milbank  
**Type:** Bolt On Meter Socket  
**Application:** Meter Socket  
**Standard:** UL Listed  
**Voltage Rating:** 600 Volts Alternating Current  
**Amperage Rating:** 480 Continuous Ampere  
**Phase:** 3 Phase  
**Frequency Rating:** 60 Hertz  
**Number Of Cutouts:** 0  
**Cable Entry:** Overhead and Underground  
**Terminal:** 1/2 Inch Stud Line Side and 1/2 Inch Stud Load Side  
**Mounting:** Surface Mount  
**Enclosure:** Type 3R, Aluminum with Powder Coat Finish



**Additional Specifications:** Number of Jaws:4 Terminal  
Hub Opening and Closing Plates:Twin Large Closing Plates  
Hub Opening and Closing Plates:Twin Large Closing Plates  
Hub Opening and Closing Plates:Twin Large Closing Plates  
Hub Opening and Closing Plates:Twin Large Closing Plates  
Hub Opening and Closing Plates:Twin Large Closing Plates

*Utility requirements may vary. Always consult the serving utility for their requirements prior to ordering or installing this equipment. This product must always be installed by a licensed electrician. Installation of this equipment may require local electrical inspector approval.*

FEATURE TABLE		
ITEM	QTY	DESCRIPTION
A	4	U/L MNTG.EMBOSS
B	1	¼ SOLID K.O.
C	2	½, ¾ CONC. K.O.
D	7	3, 3½, 4 CONC. K.O.



Version:

1

All dimensions are +/- 1/16".  
Drawing views are not to scale.  
Utility requirements for this equipment may vary. Always consult the serving utility for their requirements prior to ordering or installing this equipment. This product must be installed by a licensed electrician. Installation of this equipment may require local electrical inspector approval.