



IB8382-T/-ET



IB8382-F3/-EF3

Bullet Network Camera



5MP · 30M IR · WDR Enhanced · 3DNR · P-iris · Remote Focus · Smart Stream · Smart IR · Video Rotation · IP66 · IK10 · Cable Management · Extreme Weather · Defog

VIVOTEK's IB8382 is a series of economic professional outdoor bullet network cameras in VIVOTEK's 5MP Lite series which offer up to 15 fps at 5-Megapixel or 30 fps at 1080p resolution at a competitive price. Equipped with a new high resolution image sensor, different from other 5MP cameras, the IB8382 series provides sharper image quality and finer detail at a cost-effective price. And with powerful 3D Noise Reduction technology and Smart Stream technology the IB8382 series can also optimize resolution for a desired object or area to maximize efficiency of bandwidth usage.

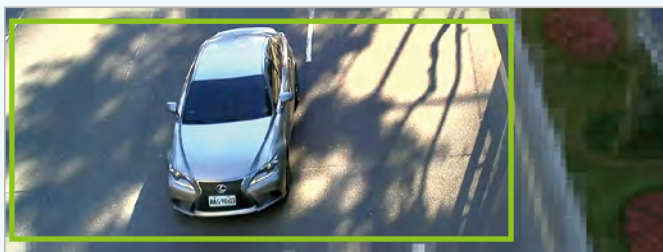
To create the perfect focus required to reap the benefits of higher resolutions, VIVOTEK's IB8382 series provides the options of both fixed focus, used for simple operation without electrical power, and remote focus with built-in stepping motors and P-iris for precise adjustment remotely.

To provide higher resolution in outdoor and harsh environments, VIVOTEK's IB8382 series is also armed with IP66-rated housing to help the camera body withstand rain, dust and high pressure water jets from any direction, while its IK10-rated housing provides protection against acts of vandalism or other impacts. Additionally, a wide operating temperature range further improves the IB8382-EF3 and IB8382-ET's performance and reliability in extremely cold or warm weather, even when using PoE.

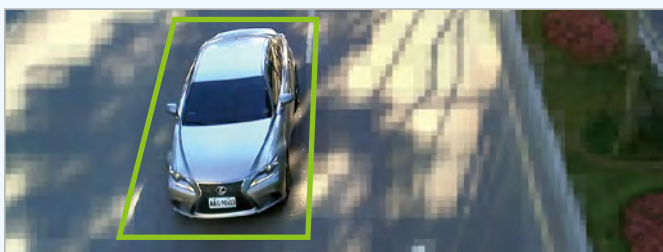
With the highly flexible VADP (VIVOTEK Application Development Platform), users can extend the features of this series by adding third-party applications for the IB8382-F3, IB8382-EF3, IB8382-T, and IB8382-ET. Thus the IB8382 series is not only equipped with multiple focusing methods and wide temperature range options, is but ideal for a wide variety of applications.

Key Features

- 5-Megapixel CMOS Sensor
- 15 fps @ 2560x1920, 30 fps @ 1920x1080
- 3 ~ 9 mm, Vari-focal, Remote Focus, P-iris Lens (IB8382-T/-ET)
- Removable IR-cut Filter for Day & Night Function
- Built-in IR Illuminators, Effective up to 30 Meters
- Smart IR Technology to Avoid Overexposure
- Smart Stream to Optimize Bandwidth Efficiency
- WDR Enhancement for Unparalleled Visibility in Extremely Bright and Dark Environments
- 3D Noise Reduction for Low-light Conditions
- Two-way Audio
- Video Rotation for Corridor View
- Weather-proof IP66-rated and Vandal-proof IK10-rated Housing
- Extreme Weather Support with PoE (IB8382-EF3/-ET)
- VIVOTEK VCA (Video Content Analysis) Support



Smart Stream - Manual Mode



Smart Stream - Auto Mode



Entrance



Campus



Parking Lot



Train Station

Technical Specifications

| | |
|-------------------------------|---|
| Model | IB8382-T: Vari-focal, P-iris, Remote Focus IB8382-ET: Vari-focal, P-iris, Remote Focus, Extreme Weather IB8382-F3: Fixed-focal IB8382-EF3: Fixed-focal, Extreme Weather |
| System Information | |
| CPU | Multimedia SoC (System-on-Chip) |
| Flash | 1Gb |
| RAM | 4Gb |
| Camera Features | |
| Image Sensor | 1/3.2" Progressive CMOS |
| Maximum Resolution | 2560x1920 (5MP) |
| Lens Type | Vari-focal, Remote Focus (IB8382-T/-ET) Fixed-focal (IB8382-F3/-EF3) |
| Focal Length | IB8382-T/IB8382-ET: f = 3 ~ 9 mm IB8382-F3/IB8382-EF3: f = 3.6 mm |
| Aperture | IB8382-T/IB8382-ET: F1.2 ~ F2.3 IB8382-F3/IB8382-EF3: F2.1 |
| Auto-iris | P-iris (IB8382-T/IB8382-ET) |
| Field of View | IB8382-T/IB8382-ET: 35° ~ 78° (Horizontal) 27° ~ 54° (Vertical) 44° ~ 100° (Diagonal) IB8382-F3/IB8382-EF3: 68° (Horizontal) 51° (Vertical) 89° (Diagonal) |
| Shutter Time | 1/5 sec. to 1/32,000 sec. |
| WDR Technology | WDR Enhanced |
| Day/Night | Removable IR-cut filter for day & night function |
| Minimum Illumination | IB8382-T/IB8382-ET: 0.04 Lux @ F1.2 (Color) 0.001 Lux @ F1.2 (B/W) IB8382-F3/IB8382-EF3: 0.089 Lux @ F2.1 (Color) 0.001 Lux @ F2.1 (B/W) |
| Pan/tilt/zoom Functionalities | ePTZ: 48x digital zoom (4x on IE plug-in, 12x built in) |
| IR Illuminators | Built-in IR illuminators, effective up to 30 meters with Smart IR IR LED*8 |
| On-board Storage | Slot type: SD/SDHC/SDXC card slot Seamless Recording |
| Video | |
| Compression | H.264 & MJPEG |
| Maximum Frame Rate | 15 fps @ 2560x1920 15 fps @ 2048x1536 30 fps @ 1920x1080 In both compression modes |
| Maximum Streams | 4 simultaneous streams |
| S/N Ratio | Above 65 dB |
| Dynamic Range | 70 dB |
| Video Streaming | Adjustable resolution, quality and bitrate; Smart Stream |
| Image Settings | Adjustable image size, quality and bit rate, time stamp, text overlay, flip & mirror, configurable brightness, contrast, saturation, sharpness, white balance, exposure control, gain, backlight compensation, privacy masks, scheduled profile settings, 3D noise reduction, video rotation, defog |
| Audio | |
| Audio Capability | Two-way Audio (full duplex) |
| Compression | G.711, G.726 |
| Interface | External microphone input Audio output |
| Network | |
| Users | Live viewing for up to 10 clients |
| Protocols | IPv4, IPv6, TCP/IP, HTTP, HTTPS, UPnP, RTSP/RTMP/RTCP, IGMP, SMTP, FTP, DHCP, NTP, DNS, DDNS, PPPoE, CoS, QoS, SNMP, 802.1X, UDP, ICMP, ARP, SSL, TLS |
| Interface | 10Base-T/100 BaseTX Ethernet (RJ-45) *It is highly recommended to use standard Cat. 5e & Cat. 6 cables which are compliant with the 3P/ETL standard. |

| | |
|------------------------|--|
| ONVIF | Supported, specification available at www.onvif.org |
| Intelligent Video | |
| Video Motion Detection | Five-window video motion detection |
| VCA | Line crossing detection, field detection, loitering detection *Available per project request. |
| Alarm and Event | |
| Alarm Triggers | Motion detection, manual trigger, digital input, periodical trigger, system boot, recording notification, camera tampering detection, audio detection |
| Alarm Events | Event notification using digital output, HTTP, SMTP, FTP, NAS server and SD Card File upload via HTTP, SMTP, FTP, NAS server and SD card |
| General | |
| Smart Focus System | IB8382-T/IB8382-ET: Remote Focus |
| Connectors | RJ-45 cable connector for Network/PoE connection Audio input Audio output DC 12V power input Digital input*1 Digital output*1 |
| LED Indicator | System power and status indicator |
| Power Input | DC 12V IB8382-T/-F3: IEEE 802.3af/at PoE Class 0 IB8382-ET/-EF3: IEEE 802.3at PoE Class 4 |
| Power Consumption | IB8382-T: Max. 9.5 W IB8382-ET/-EF3: Max. 25 W (Heater on) IB8382-F3: Max. 9 W |
| Dimensions | Ø 88 x 293 mm |
| Weight | Net: 1264 g |
| Casing | Weather-proof IP66-rated housing Vandal-proof IK10-rated metal housing (Casing only) |
| Safety Certifications | IB8382-T/-ET: CE, LVD, FCC Class A, VCCI, C-Tick, UL IB8382-F3/-EF3: CE, LVD, FCC Class A, VCCI, C-Tick |
| Operating Temperature | IB8382-T/-F3: Starting Temperature: -10°C ~ 50°C (14°F ~ 122°F) Working Temperature: -20°C ~ 50°C (-4°F ~ 122°F) IB8382-ET/-EF3: Starting Temperature: -40°C ~ 50°C (-40°F ~ 122°F) Working Temperature: -50°C ~ 50°C (-58°F ~ 122°F) |
| Warranty | IB8382-T/-ET: 36 months IB8382-F3/-EF3: 24 months |
| System Requirements | |
| Operating System | Microsoft Windows 7/8/Vista/XP/2000 |
| Web Browser | Mozilla Firefox 7~43 (Streaming only) Internet Explorer 7/8/9/10/11 |
| Other Players | VLC: 1.1.11 or above Quicktime: 7 or above |
| Included Accessories | |
| CD | User's manual, quick installation guide, Installation Wizard 2 |
| Others | Quick installation guide, warranty card, sun shield, wall mount bracket, waterproof RJ45 Ethernet enclosure, alignment sticker / desiccant bag, waterproof connector, screw |

Dimensions

