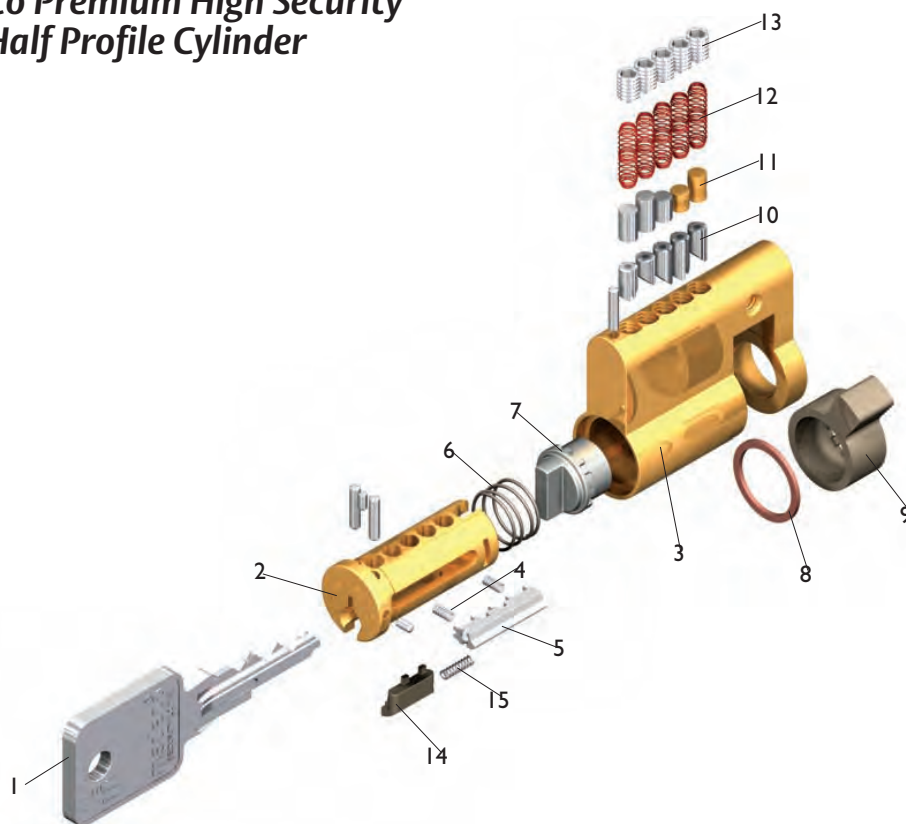


Medeco Premium High Security Euro Half Profile Cylinder



Item	Description	Part Number
1	Key	As Required
2	Plug	Cylinder Specific
3	Shell	Cylinder Specific
4	Sidebar Springs	CP-030018
5	Sidebar	CP-084X71
6	Cam Spring	CP-030860
7	Actuator	CP-220090
8	Plug Retainer	CP-021490
9	Cam	CT-Z88
10	Bottom Pins	As Required
11	Top Pins	As Required
12	Springs (Phosphor Bronze)	CP-030001
13	Pin Chamber Allen Set Screws #8-32 x 1/4"	CP-011013-040
14	Slider – (varies related to keyway)	CP-084591
15	Slider Spring	CP-030910

Profile Components

Description	Part Number	Price
5 Pin Plug For Half Cylinder	12286	
5 Pin Double Cylinder Profile Plug	12286	
6 Pin Plug For Half Cylinder	12288	
6 Pin Double Cylinder Profile Plug	12288	
5 Pin Double Cylinder Profile Shell	13327	
6 Pin Double Cylinder Profile Shell	13346	
5 Pin Shell For Half Cylinder	13365	
6 Pin Shell For Half Cylinder	13375	
Thumbturn Set Screw	CP-011013-020	
Profile Cylinder Set Screw, #8-32 x 1/4"	CP-011013-040	
Set Screw for "CR" Thumbturn	CP-012409-030	
Thumbturn Set Screw	CP-012411-030	
Set Screw For Removable Thumbturn	CP-012411-040	
Thumbturn Retaining Clip	CP-020031	
Cartridge Retainer	CP-020240	
Plug Retaining Clip - Old Style, C Clip	CP-021400	
Plug Retaining Clip - Continuous Ring	CP-021490	
Tumbler Spring	CP-030001	
Single Cylinder Profile Pilot Spring	CP-030024	
Single Cylinder Profile Thumbturn Actuator Spring	CP-030025	
Actuator Spring For Half Cylinder	CP-030860	
Snap Ring	CP-031030	
Single Cylinder Profile Actuator	CP-100111	
Double Cylinder Profile EAC/EAC Push Rod	CP-100761	
Double Cylinder Profile Clutch	CP-220071	
5 and 6 Pin Actuator For Half Cylinder	CP-220090	
Clutch Assembly, Emergency	CP-220120	
Double Cylinder Profile EAC/EAC Clutch	CP-220201	
Double Cylinder Profile Gear Cam	CP-230081	
Thumbturn Cylinder Profile Gear Cam	CP-230091	
Single Cylinder Profile Thumbturn Actuator Pilot	CP-280261	
Standard Round "SR" Thumbturn Assembly 5 Pin	CP-285981-500	
Low Profile "LP" Thumbturn Assembly 5 Pin	CP-286011-500	
Lever "RL" Thumbturn Assembly 5 Pin	CP-285951-500	
Crescent "CR" Thumbturn Assembly 5 Pin	CP-286041-500	
Decorative "RD" Thumbturn Assembly 5 Pin	CP-285921-500	
Decorative "RD" Thumbturn Only	CP-285901	
Lever "RL" Thumbturn Only	CP-285931	
Low Profile "SR" Thumbturn Only	CP-285961	
Low Profile "LP" Thumbturn Only	CP-285991	
Oval Int./Ext. Cylinder tailpiece	CT-Y76	
Cam, British Oval (Half/Double)	CT-Z26	
Cam, British Oval (Thumbturn)	CT-Z29	
Double Cylinder Profile Cam	CT-Z50	
Thumbturn Cylinder Profile Cam, Non Indexing	CT-Z51	
Indexing Cam For Half Cylinders	CT-Z88	
Cam, Medeco XT Double Profile Cyl	CT-Z98	
Double Cylinder Profile EAC/EAC Cam	CT-ZA2	

**Refer to the eCylinder section for more detail on specific technologies available and pricing. Technologies are represented by the following letters:
T = Medeco³, S = M³ CLIQ, J = Medeco³ BiLevel, W = Biaxial, V = Medeco Biaxial CLIQ, K = Medeco KM, N = Medeco X4, C = Classic CLIQ, M = Medeco X4 CLIQ,
“-” = Original, Z = Medeco Original KW CLIQ, G = Medeco XT ***See key section for surcharges for custom coined cut keys or special stamping requirements.

Note: (P) refers to **Pinned** and **(S)** to **Sub-Assembled** at the end of each part string in the price book.

Caps (Sold in bags of 100)

Description	Part Number	Price
Medeco X4 I/C Pin Spring Caps (Stamped) (for rekeying)	CP-170430	
Medeco X4 I/C Pin Spring Caps (Machined) (for new cylinder)	CP-170440	
6 Pin Spring Covers for Medeco 32 & 31 Series I/C, Sargent, KeyMark Corbin (7Pin) Medeco X4 Yale (6&7 Pin), Brass, 1.010" Length	CP-170011	
5 Pin Spring Covers for Medeco 32 Series I/C, Cams and Switch Lock Plugs, Brass, .840" Length	CP-170021	
3 Pin Spring Covers for Cam and Switch Lock Plugs, Brass, .500" Length	CP-170031	
4 Pin Spring Covers for Cam and Switch Lock Plugs, Brass, .670"	CP-170041	
6 Pin Spring Covers for Medeco and Medeco X4 20 Series Key-in-Knob Cyls, Medeco X4 Schlage LFIC, Stainless Steel, .980" - Old Style	CP-170051	
5 Pin Spring Covers for Medeco 20 Series Key-in-Knob Cyls, Stainless Steel, .810" - Old Style	CP-170061	
6 Pin Spring Covers for Medeco ³ 32*0202 Removable Cylinder for 50 Series Brass Body Padlocks, Brass, 1.010" (Notch in cover for steel ball bearing retainer)	CP-170271	
6 Pin Spring Covers for Medeco & Medeco X4 20 Series Key-in-Knob Cylinders & Medeco X4 Schlage Style LFIC	CP-170730-6	
5 Pin Spring Covers for Medeco 20 Series Key-in-Knob Cylinders	CP-170730-5	

Springs (Sold in bags of 100)

Description	Part Number	Price
Tumbler Springs, 10 Series Door Hardware	CP-030001	
Tumbler Springs, 60 Series Cam & Switch Locks	CP-030017	
Sidebar Springs	CP-030018	
Tumbler Springs, 32 Series (stainless steel)	CP-030042	
Medeco ³ Slider Springs	CP-030910	
Medeco X4 Springs (Bag of 300)	CP-030590	

**Refer to the eCylinder section for more detail on specific technologies available and pricing. Technologies are represented by the following letters:
T = Medeco³, S = M³ CLIQ, J = Medeco³ BiLevel, W = Biaxial, V = Medeco Biaxial CLIQ, K = Medeco KM, N = Medeco X4, C = Classic CLIQ, M = Medeco X4 CLIQ,
"." = Original, Z = Medeco Original KW CLIQ, G = Medeco XT ***See key section for surcharges for custom coined cut keys or special stamping requirements.

Note: (P) refers to **Pinned** and (S) to **Sub-Assembled** at the end of each part string in the price book.