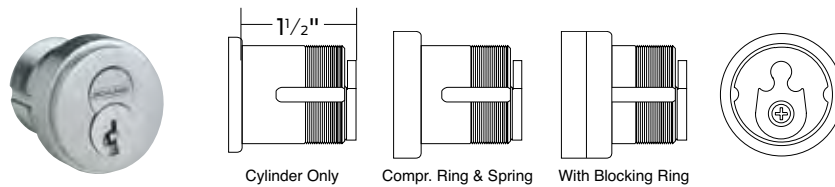
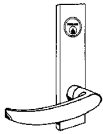

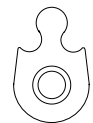


Small format interchangeable core mortise cylinders

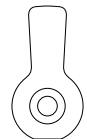


Cylinders for Schlage L Series mortise locks

Design	Function	Core mechanism			
		Everest 29 restricted (GD suffix)	Keyed construction (HD suffix)	Disposable construction (BDC suffix)	Housing less core (BD suffix)
	All except L9060 outside	80-308	80-138	80-115	80-108
	L9060 outside	80-304	80-134	80-112	80-104
	All except L9060 outside	80-301	80-131	80-109	80-101
	L9060 outside	80-304 + 36-082-050	80-134 36-082-050	80-112 36-082-050	80-104 36-082-050



L583-255
Cam for all functions
Except L9060 outside



K510-680
Cam for
L9060 outside

Notes 1. Available in 605, 606, 609, 612, 613, 619, 625, and 626 finish. Cores furnished 606 and 626 only.
2. All cylinders are 1 3/8" long.

Mortise cylinders with straight cam for exit devices

Number	Core type
80-302	Everest 29 restricted core
80-110	Disposable constr. core
80-132	Keyed constr. core
80-102	Housing less core

Furnished with compression ring, spring and 1/4" blocking ring.

Notes 1. Available in 605, 606, 612, 613, 629, 625, and 626 finish.
Cores furnished 606 and 626 only.
2. All cylinders are 1 3/8" long.



K510-730
Straight cam,
other applications