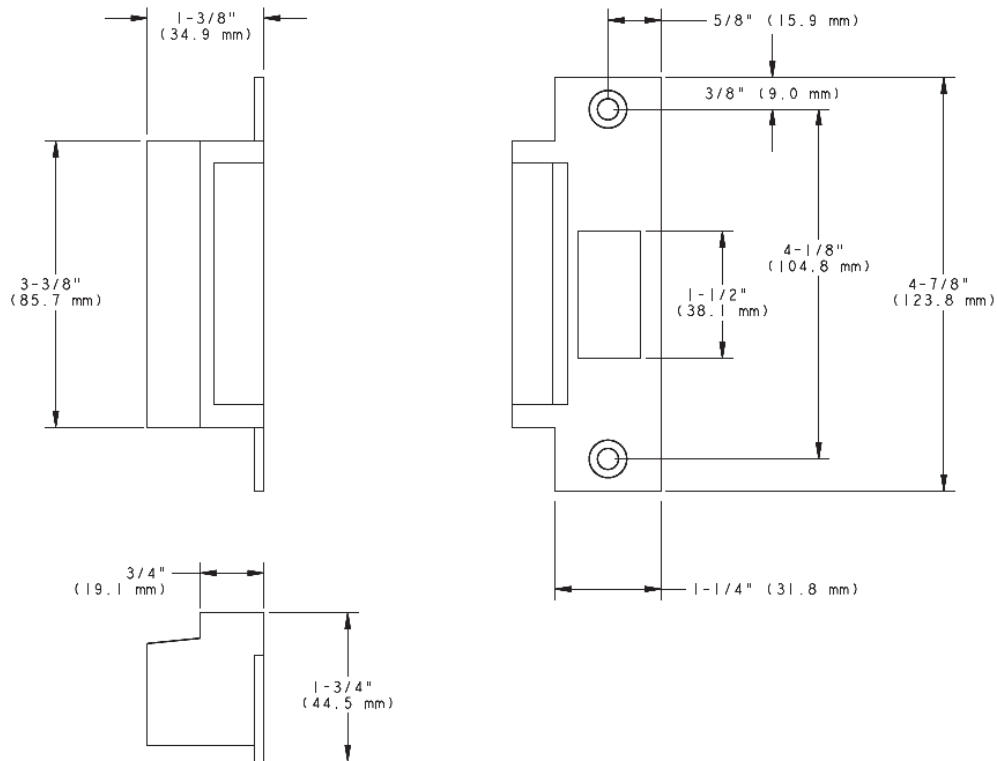
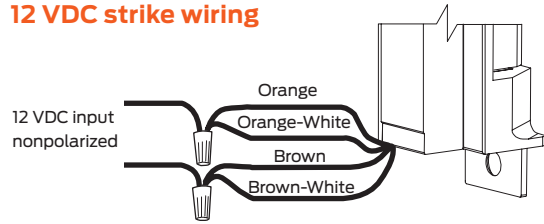


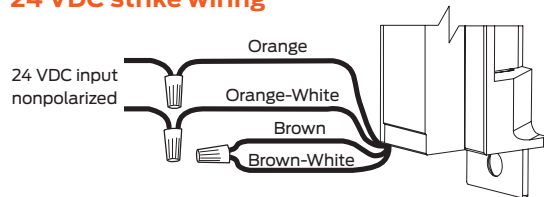
## 4200 Series electric strikes dimensions



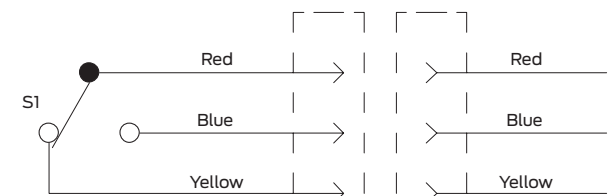
### 12 VDC strike wiring



### 24 VDC strike wiring



### Latchbolt monitoring switch (4212 only)



Switch shown with latch status tripper depressed

### Ordering information

4200 - S024 - EB

Model	Rectifier kit*	Buzzer*
1	2	3

\* Optional

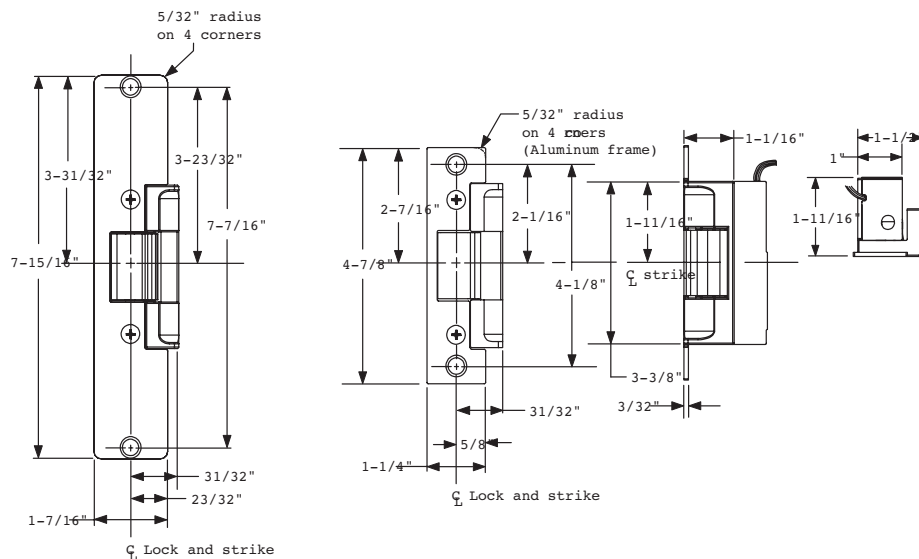
Selections correspond with the numbers above

1	Model
4211	See model specification chart to make the proper selection
4212	See model specification chart to make the proper selection
2	Rectifier kit (optional)
S012	Converts 12 VAC voltage to 12 VDC to operate the solenoid
S024	Converts 24 VAC voltage to 24 VDC to operate the solenoid
3	Buzzer (optional)
EB	Entry Buzzer, with fail-secure (FSE) configured

### Standard features

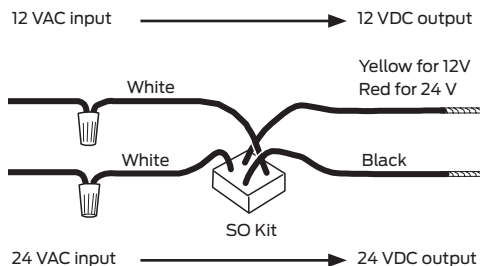
- Power failure mode: Field configurable fail-secure/ fail-safe
- Voltage: Field configurable 12 VDC/24 VDC dual voltage solenoid
- Finish: 630 satin stainless steel

## 5100 Series electric strikes dimensions

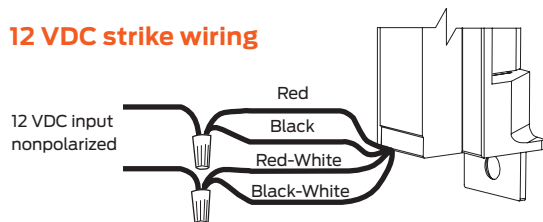


Solenoid power requirements; 12VDC, 0.38 A, 24 VDC, 0.19 A

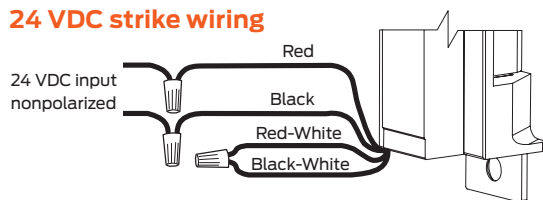
For DC operation, Von Duprin PS902 series power supply is recommended. For AC operation, Von Duprin SO24 kit is recommended.



### 12 VDC strike wiring



### 24 VDC strike wiring



## Ordering information

5100-S024

Model	Rectifier kit*
1	2

\* Optional

Selections correspond with the numbers above

1	Model
5100	Electric strike for cylindrical locksets
2	Rectifier kit (optional)
S012	Converts 12 VAC voltage to 12 VDC to operate the solenoid
S024	Converts 24 VAC voltage to 24 VDC to operate the solenoid

## Standard features

- 24 volts DC
- Fail-secure
- Field convertible to fail-safe

# 6100 Series how to order

## Ordering information

6112 - FSE - DS - 24 - S024 - US3 - EB

Model	Power failure mode	Dual switch*	Voltage	Rectifier kit*	Finish	Buzzer*
1	2	3	4	5	6	7

\* Optional

### Selections correspond with the numbers above

1	Model	3	Dual switch (optional)	6	Finish
6111	See chart on page 3 to make the proper selection	DS	Monitors latch bolt and lock status. DS switches rated at 24 VDC 50 milliampere - 2 amps.	US3/85	Plated polished brass on stainless steel
6112	See chart on page 3 to make the proper selection	DS-LC	Optional for computer monitoring. Monitors latch bolt & lock status. DS switches rated 24 VDC 50 milliampere or less.	US4/84	Plated dull brass on stainless steel
6113	See chart on page 3 to make the proper selection			US10/06	Plated dull bronze on stainless steel
6114	See chart on page 3 to make the proper selection	4	Voltage (VDC)	US10B/86	Plated dark bronze on stainless steel
6121	See chart on page 3 to make the proper selection	24	Low voltage DC power	US32/31	Stainless steel, polished
2	Power failure mode	12	Low voltage DC power	US32D/32	Stainless steel, satin
FSE	Fail-secure. Requires power to be applied to unlock the strike lip. On loss of power, the strike lip is locked.	If AC power is required specify rectifier kit below.		7	Buzzer (optional)
	<b>Fire-rated.</b>	5	Rectifier kit (optional)	EB	Entry Buzzer.
FS	Fail-safe. Requires power to be applied to lock the strike lip. On loss of power, the strike lip is unlocked.	SO12	Converts 12 VAC voltage to 12 VDC to operate the solenoid	Only available if Fail-Secure (FSE) is specified.	
	<b>Non-fire-rated.</b>	S024	Converts 24 VAC voltage to 24 VDC to operate the solenoid		