



**SILENT
KNIGHT**

by Honeywell

IntelliKnight® Model EVS-INT50W

Intelligent 50 Watt Internal Amplifier

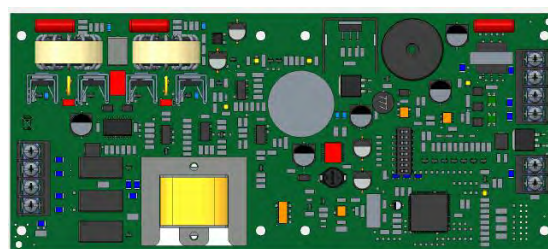
The EVS-INT50W is an intelligent 50 watt amplifier for use with the 5820XL-EVS. It is used to amplify the audio message for distribution throughout the facility. The EVS-INT50W is designed for mounting in the 5820XL-EVS cabinet assembly for convenient installation and access.

For more information about the EVS-INT50W, or to locate your nearest source, please call 800-328-0103.

Description

The EVS-INT50W is capable of producing 50 watts of audio power on one speaker circuit. It is designed to conveniently mount in the 5820XL-EVS cabinet, making it an ideal solution for small voice evacuation installations.

The EVS-INT50W is powered and supervised from the 5820XL-EVS, eliminating the need for an additional AC source and battery backup.



Model EVS-INT50W

Features

- SBUS addressable
- 50 watts of supervised audio power
- One Class A or Class B speaker circuit
- 25 volt or 70.7 volt operation
- UL 864 and UL 2572
- Easy to install assembly in the 5820XL-EVS cabinet
- Six-wire connection to the EVS system:
 - Two-wires for the Voice BUS
 - Two-wires for the SBUS
 - Two-wires for the 24 VDC power source from an I/O circuit on the 5820XL-EVS programmed for constant auxiliary power
- UL listed for 520Hz signaling when used with compatible System Sensor speakers. See 5820XL-EVS installation manual LS10061-001SK-E for list of compatible speakers

Listings

Meets the requirements for NFPA 72 Local Protective Signaling Systems & Emergency Communication Systems.

UL 864 and UL 2572

Other Listings: CSFM (pending)

Installation

The EVS-INT50W mounts in the 5820XL-EVS cabinet.

Compatibility

The EVS-INT50W is compatible with the 5820XL-EVS.

Model EVS-INT-50W

Intelligent 50 Watt Internal Amplifier

Engineering Specifications

The contractor shall furnish and install where indicated on the plans, Silent Knight internal amplifier model EVS-INT50W. The amplifier shall be UL listed and compatible with the Silent Knight model 5820XL-EVS.

The amplifier shall provide up to 50 watts of supervised audio power on one speaker circuit. The amplifier shall be capable of 25 or 70.7 VRMS operation. The amplifier shall be capable of a 520Hz tone when used with compatible speakers.

The amplifier shall be mounted and housed in the Silent Knight 5820XL-EVS cabinet. The 5820XL-EVS shall provide the voice bus (VBUS), serial bus (SBUS), and 24 VDC power to the amplifier. The 5820XL-EVS shall control the activation of the amplifier speaker circuit via panel programming.

Specifications

Physical

Dimensions: 4.5" W x 10" H x 1.81" D
(11.43 W x 25.4 H x 4.6 D cm)

Shipping weight: 2 lbs.

Electrical

Power: 24 VDC

Standby Current: 52 mA

Alarm Current (EVS-INT50W only):

275 mA @ 25V

310 mA @ 70.7V

Full Alarm load current:

2.84 A @ 25V

2.9 A @ 70.7V

Total Power:

50 Watts @ 25 Vrms or 70.7 Vrms

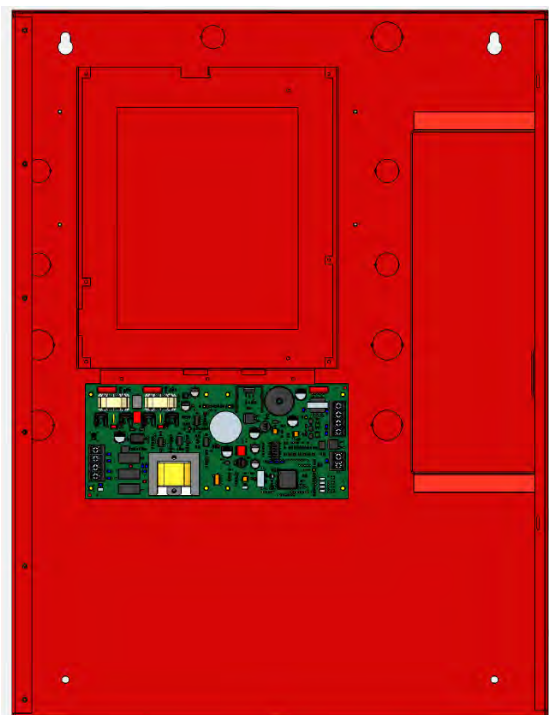
Environmental

Operating Temperature: 32°F – 120°F (0°C – 49°C)

Humidity: 10% – 93% non-condensing

Ordering Information

EVS-INT50W Intelligent 50 Watt Internal Amplifier



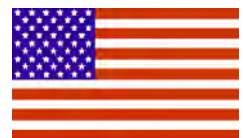
EVS-INT50W installed in 5820XL-EVS cabinet



**SILENT
KNIGHT**

by Honeywell

This document is not intended to be used for installation purposes. We try to keep our product information up-to-date and accurate. We cannot cover all specific applications or anticipate all requirements. All specifications are subject to change without notice. For more information, contact Silent Knight 12 Clintonville Road, Northford, CT 06472 Phone: (203) 484-7161, Fax: (203) 484-7118. For Technical Support, Please call 800-446-6444.
www.silentknight.com.



Assembled in America