

Wall Mount Box Speakers

❖Public Address Speaker

BS-678

- Stylish, compact and unobtrusive design
- Quick and easy installation
- Horizontal / vertical installation
- Push-type input terminal allows easy cable connections and bridge wiring
- Ideally suited for BGM and announcements



❖Public Address Speaker

BS-680FC

BS-680U*

- Quick and easy installation
- Strong all-metal body
- Horizontal / vertical installation
- Wall / in-wall mounting
- Ideally suited for voice alarm system application
- Two statite screw terminal blocks and thermal fuse
- *UL 1480 UUMW version



Specifications

	BS-678	BS-680FC	BS-680U
Rated Input	6W (100V line)		6W (70V line)
Rated Impedance	100V line: 1.7kΩ, 3.4kΩ, 6.7kΩ, 13kΩ 70V line: 1.7kΩ, 3.4kΩ, 6.7kΩ, 13kΩ	100V line: 1.7kΩ, 3.3kΩ, 6.7kΩ, 13kΩ 70V line: 1.7kΩ, 3.3kΩ, 6.7kΩ, 13kΩ	70V line: 830Ω (6W), 1.67kΩ (3W), 5kΩ (1W) 25V line: 150Ω (6W), 210Ω (3W), 650Ω (1W)
Sensitivity (1W, 1m)	94 dB	96 dB	94 dB
Frequency Response	150 – 20,000 Hz		
Speaker Component	16cm/6.3" double cone-type		
Finish	Enclosure: Wood, off-white or black Grille: Surface-treated steel plate net, off-white or black	Enclosure: Steel plate, off-white Grille: Stainless steel punching net, off-white	
Dimensions	250(W) x 190(H) x 110(D)mm 9.8(W) x 7.5(H) x 4.3(D)in	310(W) x 190(H) x 90(D) mm 12.2(W) x 7.48(H) x 3.54(D)in	
Weight	1.7kg / 3.7lbs	2.6kg / 5.73lbs	

❖Wall-Mount Public Address Speakers

BS-1034

BS-1034S

- Easy and quick installation
- Low profile, beautiful design
- Creates a distinctly different impression depending on whether it is installed horizontally or vertically
- Available in off-white, which matches any interior style, and silver
- Ideally suited for BGM and announcements



Specifications

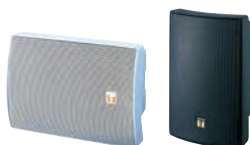
	BS-1034	BS-1034S
Rated Input (100V line)	10W	
Rated Impedance	100V line: 1kΩ, 2kΩ, 3.3kΩ, 10kΩ/70V line: 500Ω, 1kΩ, 2kΩ, 3.3kΩ, 10kΩ	
Sensitivity (1W, 1m)	90 dB	
Frequency Response	120 – 18,000 Hz	
Speaker Component	Low: 12cm cone-type, High: Balance dome-type	
Finish	Enclosure: HIPS resin, off-white Grille: Steel plate net, off-white	Enclosure: HIPS resin, silver Grille: Steel plate net, silver
Dimensions	210(W) x 330(H) x 80(D)mm / 8.3(W) x 13(H) x 3.1(D)in	
Weight	1.4kg (3.1lbs)	

❖Music/Paging Speakers

BS-1030B

BS-1030W

- 2-Way bass reflex speaker
- Cost-effective high power PA box speaker
- Aesthetically pleasing design blends in modern buildings and other facilities, such as boutique, restaurant and amusement park
- Low impedance (8Ω) or high impedance (100V/70V) selectable by rotary switch
- Splashproof construction in compliance with IPX4



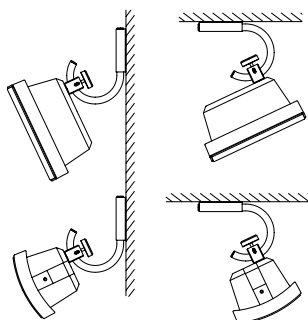
Specifications

	BS-1030B/W
Rated Input (100V line)	30W
Rated Impedance	8Ω/100V line: 330Ω, 500Ω, 200kΩ, 670Ω, 1kΩ, 2kΩ/ 70V line: 170Ω, 250Ω, 330Ω, 500Ω, 1kΩ
Sensitivity (1W, 1m)	90 dB
Frequency Response	80 – 20,000 Hz
Speaker Component	12cm dynamic cone-type + dome-type
Finish	Enclosure: ABS resin, black or white/ Grille: Surface treated steel plate, black or white, powder coating
Dimensions	196 (W) x 290 (H) x 150 (D) mm / 7.7 (W) x 11.4 (H) x 5.9 (D) in
Weight	2.5kg / 5.5lbs

❖Wall Mount Bracket

SP-410

- For BS 1030B/W



SP-410 Wall Mount Bracket Configurations