

EXHC000G

EXPLOSION-PROOF HOUSING FOR THERMAL CAMERAS



FEATURES

Solid anticorodal aluminium construction

Epoxy polyester powder painting, RAL7032

Germanium window

IP66

Housing supplied with heater. Sunshield as option

DESCRIPTION

The EXHC000G housing is made with strong Anticorodal aluminium die-cast alloy of AISi 7Mg EN - AB 42000 group.

The germanium viewing window is designed for Thermal Imaging Camera installations. Its composition with the remarkable properties covers transmission from 7.5 to 14µm IR range with the best optical quality. All external components are stove enamelled.

The cylindrical body of the housing (diameter 210mm and length 400mm) is closed on the opposite sides by two 12mm thick flanges. The Germanium window, 12mm thick, offers a viewing window of 114mm diameter. The housing is supplied with two holes for the 3/4" NPT cable glands. The camera housing is equipped with an internal housing heater and an optional sunshield.



EXHC000G + EXHS + EXWBJ

TECHNICAL DATA

GENERAL

Non-corrosive die-cast aluminium (anticorrosive)

Bicomponent polyurethane enamel with orange peel effect, RAL7032

MECHANICAL

2 inputs 3/4" NPT for cable glands

External dimensions (Ø): 210x427.5mm (8.3x16.8in)

Internal dimensions (Ø): 180x380mm (7.1x15in)

Internal usable area: 100x100x280mm (3.9x3.9x11in)

Unit weight: 15kg (33.5lb)

Germanium window

- Dimensions (Ø): 155mm (external), 114mm (4.5in) (internal)
- Thick: 12mm
- External scratch-resistant treatment: Hard Carbon Coating (DLC)
- Internal antireflection treatment
- Spectral range: 7.5µm ÷ 14µm

ELECTRICAL

Power supply IN 24Vac, 50/60Hz

Heater Ton 10°C±4°C (50°F±7°F) Toff 25°C±3°C (77°F±5°F)

- IN 24Vac, consumption 20W max

Devices to install inside the housing

- Camera equipped with lens with max total power of 20W
- Power supply max 24Vac
- Useful volume for camera / lens: 2800cm³
- Minimum distance between the walls of the housing and the camera/lens: 12mm

ENVIRONMENT

Indoor/Outdoor

Operating temperature with heating: -20°C / +50°C (-4°F / 122°F)

Always refer to the temperature in the marking.

CERTIFICATIONS

ATEX (EN 60079-0: 2009, EN 60079-1: 2007, EN 60079-31: 2009):

Ex II 2G Ex d IIC T6 Gb

Ex II 2D Ex t IIIC T85 °C Db IP66

CE 0044: notify number from competent body

EAC EX:

Ex d IIC T6 Gb

Ex tb IIIC T85 Db IP66

ACCESSORIES

EXHS000 Sunshield 650mm for EXH series

BRACKETS AND ADAPTORS

EXWBJ000 Bracket and ball joint RAL7032 for EXH series

EXBJ000 Only ball joint for EXH RAL7032 housings

SPARE PARTS

OCTEX3/4C Cable gland with gasket EX 3/4" NPT, unarmoured cable IECEX-ATEX-EAC

OCTEXA3/4C Cable gland with gasket EX 3/4" NPT, armoured cable IECEX-ATEX-EAC

OCTEXB3/4C Barrier cable gland 3/4" NPT, unarmoured cable IECEX-ATEX-EAC

OCTEXBA3/4C Barrier cable gland 3/4" NPT, armoured cable IECEX-ATEX-EAC

OCTEX3/4 Cable gland with gasket EX 3/4" NPT, unarmoured cable ATEX

OCTEXA3/4 Cable gland with gasket EX 3/4" NPT, armoured cable ATEX

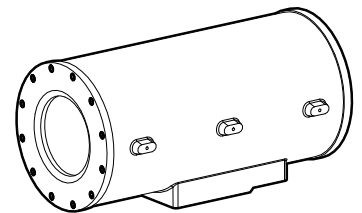
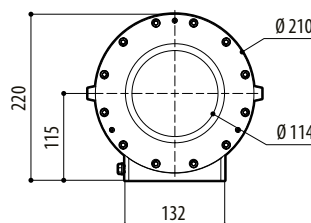
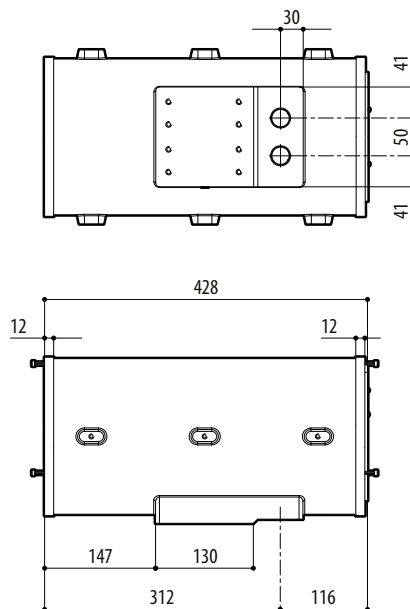
OEXPLUG3/4 Plug EX 3/4" NPT IECEX-ATEX-EAC

PACKAGE

Model Number	Weight	Dimensions (WxHxL)	Master carton
EXHC000G	17.5kg (39lb)	61x32x31cm (24x12.6x12.2in)	-

TECHNICAL DRAWINGS

Sizes in millimeters.



EXHC000G

3/4" NPT CABLE GLAND SELECTION LAYOUT							
Zone, Gas	Cable gland type	Certification	Operating temperature	Cable	Cable glands part code	Diameter of the external cable	Under armor cable diameter
IIC, Zone 1 or Zone 2 IIB or IIA, Zone 1	Barrier	IECEX/ATEX/EAC	From -60°C (140°F) a +80°C (+176°F)	Not armored	OCTEXB3/4C	From 13mm (0.5in) a 20.2mm (0.8in)	—
				Armored	OCTEXBA3/4C	From 16.9mm (0.7in) a 26mm (1in)	—
IIB or IIA, Zone 2	With gasket	IECEX/ATEX/EAC	From -60°C (140°F) a +100°C (212°F)	Not armored	OCTEX3/4C	From 13mm (0.5in) a 20.2mm (0.8in)	—
				Armored	OCTEXA3/4C	From 16.9mm (0.7in) a 26mm (1in)	From 11.1mm (0.4in) a 19.7mm (0.8in)
		ATEX	From -20°C (-4°F) a +80°C (+176°F)	Not armored	OCTEX3/4	From 14mm (0.6in) a 17mm (0.7in)	—
				Armored	OCTEXA3/4	From 18mm (0.7in) thick glass a 23mm (0.9in)	From 14mm (0.6in) a 17mm (0.7in)