



RapidRun[®] Plenum-Rated Multi-Format Runner Cable

- CMP rated for installations in plenum rated spaces
- Connectors equipped with a protective pulling cap capable of 30lbs of pulling tension
- Three 28AWG coaxial cables with braided copper shielding, three 26AWG individually shielded twisted pair, and a single 26AWG pair
- Lifetime Warranty

*The specifications apply only to the raw cable used to construct the cable assemblies



Specifications: RapidRun® Plenum-Rated Multi-Format Runner Cable

Electrical Characteristics:

3 Coax Conductors:

Impedance:	75 ± 50hm
Capacitance:	53 ± 2pF/ ft nom
Velocity of Propagation:	80%
DC Resistance:	0.221Ω/m at 20°C
Dielectric Strength:	750VAC/1 minute min.
Insulation Resistance:	100MΩ/KM at 20°C
Attenuation (dB/6m):	
	dB/100ft
	1.0MHz 0.6
	3.6MHz 1.2
	5.0MHz 1.4
	7.0MHz 1.7
	9.0MHz 2.0
	10.0MHz 2.1
	30.0MHz 3.8
	50.0MHz 5.1
	100.0MHz 7.6

3 Twisted Pair Conductors

DC Resistance:	0.139Ω/m at 20°C
Dielectric Strength:	750VAC/ minute min.
Insulation Resistance:	100MΩ/KM at 20°C

Physical Characteristics:

Voltage Rating:	300V	Approvals:	RoHS Compliant
Temperature Rating:	75°C	Warranty:	Lifetime
Temperature Range:	-25° ~ 75°C	Package Type:	Polybag
Minimum Bend Radius	82.5mm		

Conductor (Qty. 3):

Conductor Type:	28AWG 7/36 Tinned Copper
Dielectric:	Avg. Thickness: 0.13mm Cellular FEP
Shield:	Braid 94% Coverage Tinned Copper
Insulation:	Avg. Thickness: 0.20mm Low Smoke PVC: (1) red, (1) blue, (1) green

Conductor (Qty. 3 twisted pair):

Conductor Type:	26AWG 7/34 Tinned Copper
Foil Shield:	Aluminum 100% coverage
Insulation:	Avg. Thickness: 0.13 mm FEP

Conductor (Qty. 2 conductors):

Conductor Type:	26AWG 7/34 Tinned Copper
Insulation:	Avg. Thickness: 0.13 mm FEP

Overall Cable:

Foil Shield:	Aluminum Polyester Tape – 125%
Braided Shield:	85% Coverage Tinned Copper
Drain Wire:	24AWG 7/0.20 Tinned Copper
Jacket:	Avg. Thickness: 2.49mm Low Smoke PVC Orange Heat Shrink 6.80 ± 0.15mm

RapidRun Din Connector:

Connector Type:	DIN 15 pin
Contact Material:	Brass, 3µm Gold Plating
Insulation:	Black PBT
Dimensions:	16.0 x 39.0mm

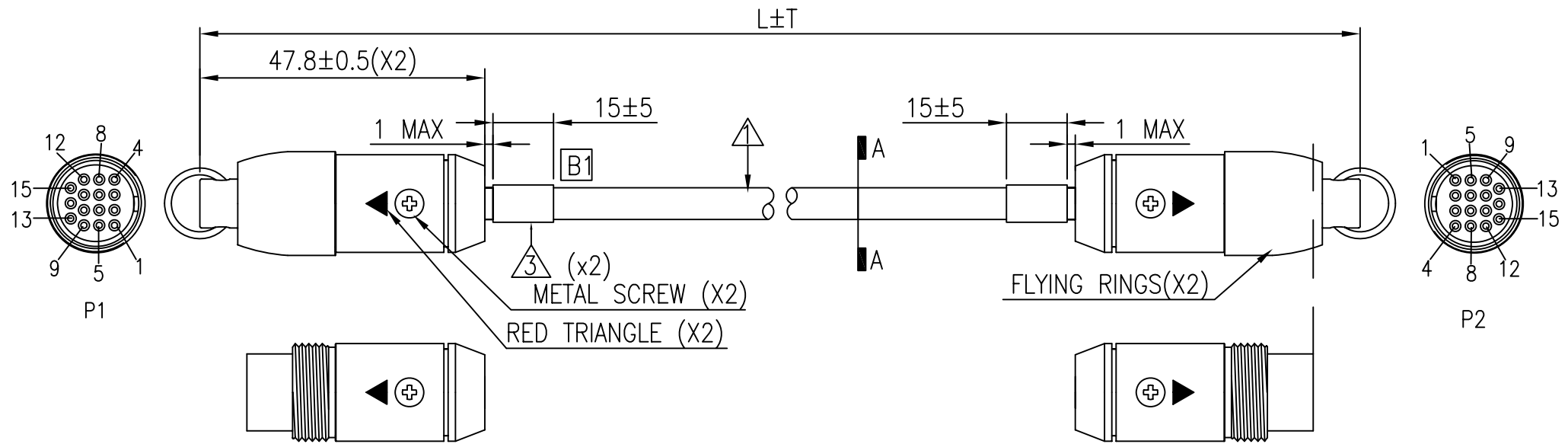


Specifications: RapidRun® Plenum-Rated Multi-Format Runner Cable

Part Number	Description	Weight (lbs)
60010	15ft RapidRun Plenum-rated Multi-Format Runner Cable	1.01
60011	25ft RapidRun Plenum-rated Multi-Format Runner Cable	1.60
60012	35ft RapidRun Plenum-rated Multi-Format Runner Cable	2.20
60013	50ft RapidRun Plenum-rated Multi-Format Runner Cable	3.33
60014	75ft RapidRun Plenum-rated Multi-Format Runner Cable	4.70
60015	100ft RapidRun Plenum-rated Multi-Format Runner Cable	6.27
60016	125ft RapidRun Plenum-rated Multi-Format Runner Cable	7.92
60017	150ft RapidRun Plenum-rated Multi-Format Runner Cable	9.40



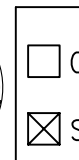
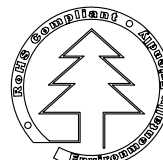
REV.	CHANGE DETAIL	ECO NO.	DATE
B	CHANGE HEAT SHRINK TUBE	20120008	2012.1.6



P/N CHART

60010	15	4572	+152/-51	8	12.5
60011	25	7620	+305/-152	10	13
60012	35	10668	+305/-152	10	13
60013	50	15240	±305	14	16
60014	75	22860	±305	14	16
60015	100	30480	±305	14	16
60016	125	38100	±305	16	18
60017	150	45720	±305	16	18
P/N(XXXXX)	***	L	T	X''	Y''

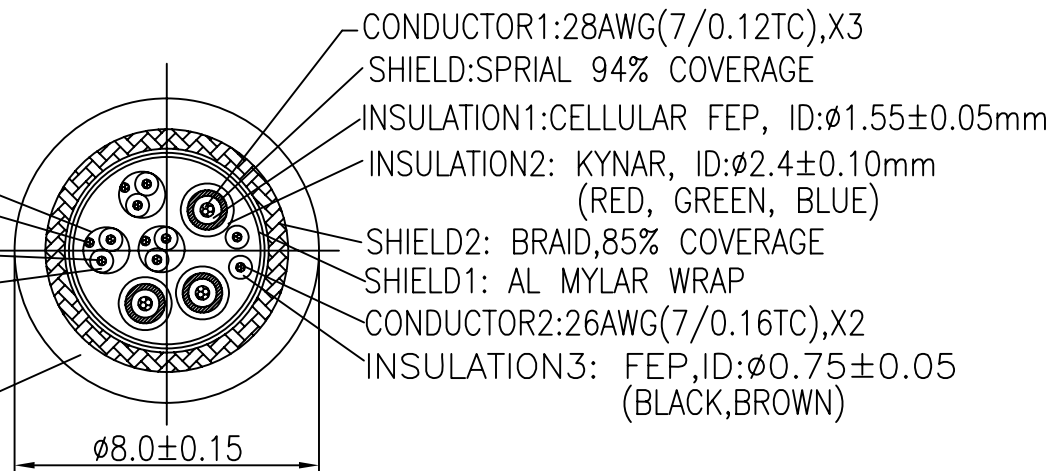
MANUFACTURED IN CHINA



SHIELD: AL MYLAR WRAP
DRAIN1:28AWG(7/0.127TC), X3

CONDUCTOR3:26AWG(7/0.16TC),X6
INSULATION4:FEP,ID:Ø0.90±0.05
(BLUE&PURPLE,RED&ORANGE,YELLOW&GREEN3PAIRS)

JACKET: KYNAR,BLACK

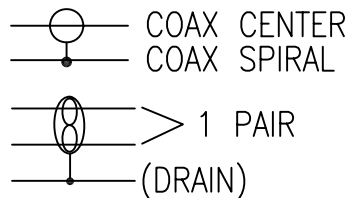


SEC A-A
SCALE:NTS

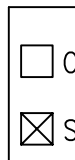
PIN OUT

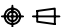

P1	1	P2	1
2	2	2	RED COAX
3	3	3	BLACK
4	4	4	BROWN
5	5	5	BLUE COAX
6	6	6	
7	7	7	GREEN COAX
8	8	8	
9	9	9	RED
10	10	10	ORANGE
11	11	11	BLUE
12	12	12	PURPLE
13	13	13	YELLOW
14	14	14	GREEN
15	15	15	DRAIN X3

SHELL ——— SHELL (BRAID)



MANUFACTURED IN CHINA

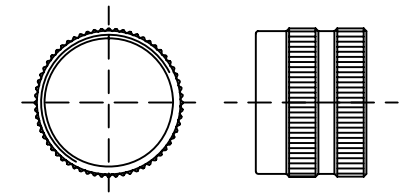


DRAWING APPROVED _____		DATE: _____	
SAMPLE APPROVED PER DRAWING SPECIFICATIONS _____		DATE: _____	
PROPRIETARY & CONFIDENTIAL.. THE INFORMATION CONTAINED IN THIS DRAWING IS THE SOLE PROPERTY OF CABLES TO GO. ANY REPRODUCTION IN PART OR AS A WHOLE WITHOUT THE WRITTEN PERMISSION OF CABLES TO GO IS PROHIBITED.			
	mm	TITLE	
SCALE	NONE	DIN15P FEMALE TO DIN15P FEMALE	
SHEET	2/4	CUS. NAME	
DIMENSIONAL TOLERANCES UNLESS OTHERWISE NOTED		CTG	
.X ±	.XX ±	CUS. P/N	
.XXX ±	ANGLES ±	SEE "P/N CHART"	ENG. DATE Dave 01-06-2012
REV. B	CUS. REV	DRAW NO. P1108010-E	CHECKED DATE Sean 01-06-2012
			APPROVED DATE Gary 01-06-2012

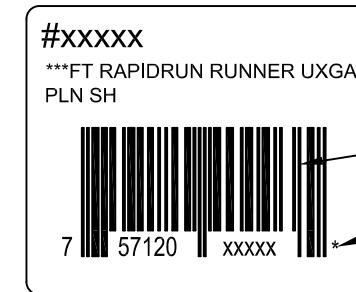


NOTES:

- ① CABLE: SEE SEC A-A, (HITACHI/#41215-11)
2. CONNECTOR: P1 & P2: DIN 15PIN FEMALE: SOLDER TYPE, GOLD FLASH CONTACTS, BLACK PBT INSULATION, ASSEMBLY TYPE, WITH METAL ASSEMBLY SHELL, WITHOUT KEY, NICKEL PLATED SHELL.
- ③ ORANGE HEAT SHRINK TUBE.
4. ALL MATERIALS ARE RoHS COMPLIANT.
5. TESTING: 100% ELECTRICAL TEST AT 10M OHM INSULATION RESISTANCE.
6. PACKING: 2 PCS RING (SEE "DETAIL A") IN A SMALL RapidRun ZIP-LOCK POLY-BAG [WITH RoHS AND "ASSEMBLY INSTRUCTIONS" MARK] WITH A CABLE IN A RapidRun ZIP-LOCK POLY-BAG. (WITH RoHS MARK) BAR CODE LABEL (WHITE BACKGROUND WITH BLACK LETTERS, SEE "DETAIL B") TO BE PASTED ON RapidRun ZIP-LOCK POLY-BAG.
7. CABLE MARKING: LASTAR - 3 COAX 28AWG - 3STP 26AWG - 2C 26AWG - E330117 (UL) TYPE CMP c(UL) 125C -RoHS - Z/YY (XXXX) ZZZZ
WHERE: Z=MONTH OF MFG.
YY=YEAR OF MFG.
XXXX=JOB NUMBER.
ZZZZ=SEQUENTIAL FOOTAGE MARKING EVERY FOOT.



DETAIL A



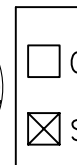
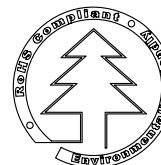
CODE UPC-A

"*" CHECK DIGIT

"***"&"xxxxx" SEE THE "P/N CHART"

DETAIL B

MANUFACTURED IN CHINA



DRAWING APPROVED _____		DATE: _____	
SAMPLE APPROVED PER _____		DATE: _____	
DRAWING SPECIFICATIONS			
PROPRIETARY & CONFIDENTIAL. THE INFORMATION CONTAINED IN THIS DRAWING IS THE SOLE PROPERTY OF CABLES TO GO. ANY REPRODUCTION IN PART OR AS A WHOLE WITHOUT THE WRITTEN PERMISSION OF CABLES TO GO IS PROHIBITED.			
	mm	TITLE DIN15P FEMALE TO DIN15P FEMALE	
SCALE	NONE	CUS. NAME CTG	
SHEET	3/4	CUS. P/N SEE "P/N CHART"	
DIMENSIONAL TOLERANCES UNLESS OTHERWISE NOTED		DRAW NO. P1108010-E	
.X ±	.XX ±	ENG. Dave 01-06-2012	
.XXX ±	ANGLES ±	CHECKED Sean 01-06-2012	
REV. B	CUS. REV	APPROVED Gary 01-06-2012	

