

# GT-Series GlobalFrame® Gen 2 Cabinet System

An easy-to-use, computer and network equipment storage cabinet that complies with data center, computer room and premise network equipment room requirements.

## KEY FEATURES

- Cabinet solution adaptable to server, network or mixed-use application
- Standard configuration includes perforated front and rear doors to support front-to-rear airflow
- Vertical Exhaust Duct configuration for high-density applications
- Sized to match industry standards
- Supports up to 1300 kg (2866 lb) of equipment
- Thermal, power and cable management accessories

## USE WITH

- PDU Mounting Brackets
- Bottom Panel
- Cable Lashing Bracket
- Klik-Nut™ Hardware Kit

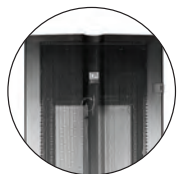
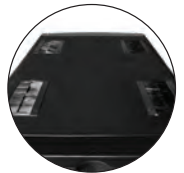
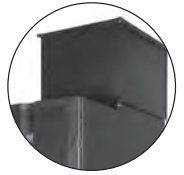
## RELATED PRODUCTS

- Snap-In Filler Panels
- Rack-Mount Shelf
- Rack-Mount PDUs



## ADVANTAGES

- Vertical Exhaust Duct Configuration**  
 Captures and removes hot exhaust air from the cabinet to optimize efficiency for high-density applications.
- Cable Openings**  
 Brush-covered cable openings in the top panel provide easy access for overhead cabling.
- Perforated Doors**  
 The standard configuration has perforated front and rear doors to support front-to-back airflow.
- Lockable Side Panels**  
 Two piece side panels for easier handling provide easy access to equipment and cables.



## SPECIFICATIONS

Description	Freestanding equipment cabinet provides front and rear support for 482.6 mm (19"W) EIA rack-mount equipment and shelves
Environment	For indoor use only, in environmentally controlled areas; not harsh environments or in air-handling spaces
Includes	Welded and bolted steel four-post frame
	Equipment mounting rails, two pairs
	Factory installed grounding/bonding system
	Leveling feet and casters; Baying kit
	Solid top panel with two or four brush-covered cable access ports
Load Capacity	1300 kg (2866 lb), stationary on leveling feet
	Equipment Space
Equipment Space	See Height, Width and Depth tables under ordering information
Material/Construction	Steel; Welded/bolted frame, mounting rails screw to frame
Grounding/Bonding:	Mounting rails, top panel, side panels and doors are electrically bonded to the cabinet frame. A mounting location for a ground lug is provided on the cabinet frame.
Finish	Epoxy-polyester hybrid powder coat in black

## Availability: Asia Pacific

**US & Canada**  
 +1-800-834-4969  
 Toronto, Ontario, Canada  
 +905-850-7770  
 chatsworth.com  
 techsupport@chatsworth.com

**Latin America**  
 +52-55-5203-7525  
 Toll Free within Mexico  
 01-800-01-7592  
 chatsworth.com.co

**Europe**  
 +44-1628-524-834  
 chatsworthproducts.co.uk

**Middle East & Africa**  
 Dubai, UAE  
 +971-4-2602125  
 chatsworth.ae

**Asia Pacific**  
 +86 21 6880-0266  
 chatsworth.com.cn



## SPECIFICATIONS

Doors/Latches	Front door is curved, perforated metal
	Rear door is flat, perforated or solid metal
	Swing handle latch with keyed lock
	Easy to remove; reversible to open from the right or left
Side Panels	Order with cabinet or as an accessory
	Solid, two-piece interlocking panels (half-height, full-depth) with a single recessed lock located near the top, center of the panel, keyed to match the front/rear door
Top Panel	Solid top panel with four rectangular 100 mm x 225 mm (3.9"W x 8.9"D) brush-covered cable openings (one per corner) on the standard configuration
	Tool-less installation and removal (after removing shipping fasteners), spring-release pins secure the panel on the cabinet frame
Equipment Support	Two pairs of equipment mounting rails in the cabinet
	Adjustable depth; fixed 25 mm (1.0") increments, rails screw into frame
	Marks on frame for easy vertical alignment
	44.45 mm (1.75"H) U spacing, marked and numbered bottom-to-top on all rails
	Universal, 19"W, 15.9 mm – 15.9 mm – 12.7 mm (5/8" - 5/8" - 1/2") vertical hole spacing complies with EIA/ECA-310-E
	Square-punched mounting holes accept Clik-Nut Hardware Kits and standard cage nuts
	Includes attachment points for accessory snap on Cable Ring Kits, order separately

The GT-Series GlobalFrame® Gen 2 Cabinet System is an easy-to-use, computer and network equipment storage cabinet that complies with data center, computer room and premise network equipment room requirements. The GT-Series GlobalFrame Gen 2 Cabinet is available in 14 popular frame sizes.

The GT-Series GlobalFrame Gen 2 Cabinet will support up to 1300 kg (2866 lb) of equipment load. Equipment mounting rails are adjustable in depth in fixed 25 mm (1 in) increments and the markings on the frame provide easy vertical alignment during adjustment. The rails feature a Z-shaped design and have attachment points along the sides for accessory cable rings that create a vertical pathway for cables. Every cabinet includes a top panel, front and rear doors, transport casters and leveling feet.

The GT-Series GlobalFrame Gen 2 Cabinet is configured standard with perforated metal front and rear doors to support front-to-rear airflow in traditional hot aisle/cold aisle applications. The standard configuration features a solid top panel with four brush-covered openings for cable access (one per corner) and a double (vertically split) rear door for easy access to equipment. The side panel is a two-piece panel (top half/bottom half) for easier handling. A high-density Vertical Exhaust Duct configuration is also available.

Create a cabinet solution that fits your needs by selecting specific thermal, cable and power management accessories. See inside for product details. Contact CPI Technical Support or visit the CPI website ([www.chatsworth.com.cn](http://www.chatsworth.com.cn) or [www.chatsworth.com.cn/gt-series](http://www.chatsworth.com.cn/gt-series) for additional product information.)

## DIMENSION TABLES

Height Dimensions – mm (in)		
Rail Height	42U	45U
Overall Height, Casters included	2013 (79.3)	2147 (84.5)
Frame Opening, Front	1876 (73.9)	2010 (79.1)

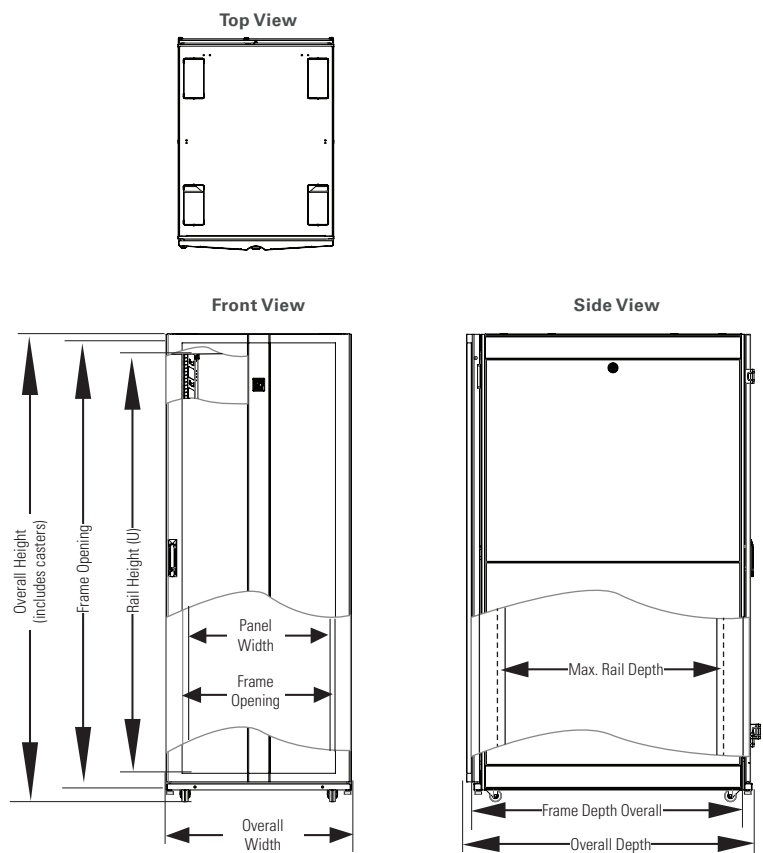
Width Dimensions – mm (in)		
Nominal Width	600	800
Overall Width	600 (23.6)	800 (31.5)
Frame Opening, Front	508 (20.0)	708 (27.9)
Panel Width	482.6 (19" EIA)	482.6 (19" EIA)

Depth Dimensions – mm (in)				
Nominal Depth	800	1000	1100	1200
Overall Depth with Doors	829 (32.6)	1029 (40.4)	1124 (44.3)	1229 (48.4)
Frame Depth, At Base, No Doors	800 (31.5)	1000 (39.4)	1100 (43.3)	1200 (47.2)
Min./Max. Rail Depth, 600 mm Cabinet¹	N/A	183 (7.2)/ 879 (34.6)	183 (7.2)/ 979 (38.5)	183 (7.2)/ 1079 (42.5)
Min./Max. Rail Depth, 800 mm Cabinet¹	173 (6.8)/ 668 (26.3)	173 (6.8)/ 868 (34.2)	173 (6.8)/ 968 (38.1)	173 (6.8)/ 1068 (42.0)

Dimension Notes:

1. When adjusted to maximum depth, mounting rails wrap around the frame uprights (corner posts). Cable Ring Kits cannot be attached to the rails when they are set to maximum depth.

## DIMENSIONAL DRAWINGS:



## ORDERING INFORMATION

Use the part number matrix below to select a GT-Series GlobalFrame Gen 2 Cabinet. Choose the Width, Depth and Side Panels to form a part number.

Example Part Number: **GT-1C420-CA**.

- Standard Top Panel Configuration has perforated front/rear doors. Vertical Exhaust Duct configuration has perforated front/solid rear doors.
- Four frame sizes to choose from—two heights, four widths, two depths.
- Includes a cabinet frame, two pairs of 482.6 mm (19"W) EIA square-punched equipment mounting rails, a solid or Vertical Exhaust Duct top panel, a perforated front door, a double perforated or solid rear door, swing handle latches, keyed locks, casters, leveling feet and baying kit.
- Supports 1300 kg (2866 lb) static load on leveling feet. Casters are designed for moving an empty cabinet into position before loading equipment. The leveling feet should be extended prior to adding equipment to the cabinet.
- Color is black.

GT	-	H	W	D	S	C	-	C	F
----	---	---	---	---	---	---	---	---	---

GT-	1. Height				2. Width			3. Depth			4. Side Panels	5. Configuration	-	6. Color	7. Frame			
		U	mm	in		mm	in		mm	in	Description	Description		Description	Description			
	1	42	2013	79.3	A	600	23.6	2	1000	39.4	0	No Sides	0	Standard Top Panel/Standard Pallet	C	Black	A	4-Slide
	2	45	2147	84.5				5	1100	43.3	1	One Side						
								4	1200	47.2	2	Two Sides						

	1. Height				2. Width			3. Depth			4. Side Panels		5. Configuration		-	6. Color		7. Frame		
		U	mm	in		mm	in		mm	in	Description		Description			Description		Description		
GT-	1	42	2013	79.3	C	800	31.5	1	800	31.5	0	No Sides	0	Standard Top Panel/Standard Pallet			C	Black	A	4-Slide
	2	45	2147	84.5				2	1000	39.4	1	One Side								
								5	1100	43.3	2	Two Sides								
								4	1200	47.2										

	1. Height				2. Width			3. Depth			4. Side Panels	5. Configuration	-	6. Color	7. Frame				
		U	mm	in		mm	in		mm	in	Description	Description		Description	Description				
GT-	1	42	2013	79.3	A	600	23.6	4	1200	47.2	0	No Sides	1	Vertical Exhaust Duct, 20-34 in (500-850 mm)	C	Black	A	4-Slide	
	2	45	2147	84.5	C	800	31.5				1	One Side							
												2			Two Sides				

### Ordering Notes:

1. Height: Two heights are available: 42U and 45U. Height is listed as rack-mount units (U). See DIMENSIONS for overall height dimension.
2. Width: Two widths are available: 600 mm (23.6 in) and 800 mm (31.5 in). The cabinet includes equipment mounting rails spaced for 482.6 mm (19" EIA) rack-mount equipment.
3. Depth: Four depths are available: 800 mm (31.5 in), 1000 mm (39.4 in), 1100 mm (43.3 in) and 1200 mm (47.2 in). Doors add approximately 25 mm (1 in) to overall depth. See DIMENSIONS for details.
4. Side Panels: Three configurations are available: no sides, one side or both sides.



GT-1C420-CA



GT-1C400-CA



GT-1A421-CA

## THERMAL MANAGEMENT ACCESSORIES

Enhance thermal performance by controlling airflow through the cabinet using the following accessories.

**Bottom Panel**

The Bottom Panel prevents airflow from entering the bottom of the cabinet.

- Solid panel with one brush-covered opening at the rear.
- Match to the width and depth of the cabinet.

**Side Panel**

One locking side panel with key, allowing easy installation.

**Air Dam Kit**

Use in the 800 mm (31.5"W) cabinet to seal the space between the equipment mounting rails and the side panels within the cabinet. With 8 cable pass ports, includes a set of equipment rail grommet kit (P/N 39133-001). Use with Snap-In Filler Panels.

**Snap-In Filler Panels**

Use Snap-In Filler Panels to seal any open rack-mount spaces in the cabinet. Snap-In Filler Panels combine with Air Dam Kit to create a one-way airflow pathway within the cabinet that separates hot and cold air. Snap-In Filler Panels are available in 1U and 2U versions.

**Equipment Rail Grommet Kit**

Set of plastic grommets that cover cable openings in the equipment mounting rails in the 800 mm wide cabinets to block airflow around equipment.

- Grommets are plastic, snap on, seal cable openings and can be cut to pass cables
- Includes: (8) grommets
- Material: Plastic

Part Number	Description	Shipping Weight kg (lb)
<b>Bottom Panel</b>		
26130-708	For 800 mm x 800 mm (31.5"D x 31.5"W) Cabinets	9.9 (22)
26130-711	For 800 mm x 1000 mm (31.5"W x 39.4"D) to 800 mm x 1200 mm (31.5"W x 47.2"D) Cabinets	15.0 (33)
26130-703	For 600 mm x 1000 mm (23.6"W x 39.4"D) to 600 mm x 1200 mm (23.6"W x 47.2"D) Cabinets	13.2 (29)
<b>Side Panel</b>		
26330-700	For 42U x 800 mm (31.5"D) Cabinets	13.5 (30)
26330-701	For 42U x 1000 mm (39.4"D) Cabinets	16.1 (35)
26330-702	For 42U x 1100 mm (43.3"D) Cabinets	17.4 (38)
26330-703	For 42U x 1200 mm (47.2"D) Cabinets	18.6 (41)
26330-704	For 45U x 800 mm (31.5"D) Cabinets	14.9 (33)
26330-705	For 45U x 1000 mm (39.4"D) Cabinets	17.4 (38)
26330-706	For 45U x 1100 mm (43.3"D) Cabinets	18.7 (41)
26330-707	For 45U x 1200 mm (47.2"D) Cabinets	20.0 (44)
<b>Air Dam Kit</b>		
26250-700	For 42U x 800 mm (31.5"W) Cabinets	7.7 (17)
26250-701	For 45U x 800 mm (31.5"W) Cabinets	7.9 (17)
<b>Snap-In Filler Panels</b>		
34537-001	1U x 19"EIA, Pack of 6	1.8 (4)
34538-001	2U x 19"EIA, Pack of 6	1.8 (4)
<b>Equipment Rail Grommet Kit</b>		
39133-001	Equipment Rail Kit, Pack of 8	0.9 (2)
<b>Fixed Shelf</b>		
26573-719	1U x 19"EIA	8.1 (18)

Color is Black.

**Fixed Shelf**

Fixed shelf with 445 mm (17.5") W x 653 mm (25.7") D surface, supports up to 100 kg (220 lb) of equipment. Mounting hardware included.

## ADDITIONAL ACCESSORIES

**Vertical Power Strips**

Power Strips attach to the PDU Mounting Brackets and distribute power to multiple devices from a single power connection. Choice of plug and outlet styles to match site requirements. Available with a thermal circuit breaker to protect circuits from overload. Optional surge-protection to protect equipment from power spikes. Optional local meters to provide easy voltage and current monitoring. Horizontal Rack-Mount versions also available.

Part Number		Description		Shipping Weight kg (lb)
Non-Surge	Surge-Protected	Plug	Outlets	
15642-212	15642-112	IEC 16A 2P+E	(10)C13/(4)C19	3.6 (8)
15644-212	15644-112	IEC 16A 2P+E	(20)C13/(4)C19	5.0 (11)
15642-222	15642-122	IEC 32A 2P+E	(10)C13/(4)C19	3.6 (8)
15644-222	15644-122	IEC 32A 2P+E	(20)C13/(4)C19	5.0 (11)
<b>Metered</b>				
15643-212	15643-112	IEC 16A 2P+E	(10)C13/(4)C19	3.6 (8)
15645-212	15645-112	IEC 16A 2P+E	(20)C13/(4)C19	5.0 (11)
15643-222	15643-122	IEC 32A 2P+E	(10)C13/(4)C19	3.6 (8)
15645-222	15645-122	IEC 32A 2P+E	(20)C13/(4)C19	5.0 (11)

Other options available. Contact CPI.

## CABLE MANAGEMENT ACCESSORIES

Keep network, KVM and power cables separate and organized using the following cable management accessories.

**Cable Ring Kit**

The Cable Ring Kit includes eight plastic D-rings that snap onto the equipment mounting rails inside the cabinet, creating a vertical pathway for cables. Select the kit to match cabinet width. There are two ring sizes (depths) for 800 mm (31.5") wide cabinets. Each rail can support seven rings. Mounting rails in the 600 mm (23.6") wide cabinet must be setback a minimum of 137.5 mm (5.4") to provide clearance for the cable rings. Mounting rails in the 800 mm (31.5") wide cabinet must be setback a minimum of 125 mm (4.9") to provide clearance for the medium cable ring and a minimum of 250 mm (9.8") to provide clearance for the large cable rings. Cable Ring Kit cannot be used with Vertical Cable Managers (P/Ns 26120-70X Or 26110-70X).

**Finger Cable Manager**

The Finger Cable Manager attaches to the cabinet's equipment mounting rails, and provides vertical cable management with plastic T-shaped cable guides and openings that align with each rack-mount space (U) in the cabinet to organize patch cords. The manager for the 600 mm (23.6") wide cabinet includes standard fingers only and can be used in either width cabinet. The manager for the 800 mm (31.5") wide cabinet is available with extended fingers and also includes a cover that partially encloses cables. Standard fingers require a 175 mm (6.9") rail setback, and the Extended fingers require a 237.5 mm (9.35") rail setback. The managers cannot be used with Cable Ring Kit (P/Ns 25104-001, 26106-001 or 26106-002). Select to match cabinet width.

**PDU Mounting Brackets**

The PDU Mounting Brackets attach to the cabinet frame and provides one or two attachment points for CPI vertical PDUs or power strips for cabinets, and multiple tie points for power cables. Secure cables to the bracket using Saf-T-Grip Straps or cable ties. Tool-less PDU attachment points are located 1645 mm and 1556 mm (64.75" and 61.25") apart. The Single PDU Mounting Bracket is 89 mm (3.5") wide. The double bracket supports two 56 mm (2.2") wide or narrower PDUs side-by-side. The Double PDU Mounting Bracket is 117 mm (4.6") wide and requires a minimum 200 mm (7.8") rail setback in 600 mm wide cabinets and a minimum 187.5 mm (7.4") rail setback in other cabinets.

**Cable Lashing Bracket**

The Cable Lashing Bracket Kit attaches to the cabinet frame and provides multiple tie points for cables. Secure cables to the bracket using Saf-T-Grip Straps or cable ties. The kit includes one full height bracket with U-shaped cable tie points and installation hardware. The Cable Lashing Bracket is 124 mm (4.9") wide with two vertical columns of tie points for cables and has a 6500 mm<sup>2</sup> (10.0 in<sup>2</sup>) cable fill area. The bracket requires a 175 mm (6.9") rail setback in 600 mm (23.6") wide cabinets and a 125 mm (4.9") rail setback in 800 mm (31.5") wide cabinets.

**Clik-Nut™ Hardware Kit**

Redefining the Cage Nut. The patent-pending design eliminates the need for tools, resulting in easier and faster installation, while maintaining load-bearing strength.

- Easy, tool-less attachment and removal
- Fits .375" (9.5 mm) square hole
- Grip range 16 ga to 12 ga, .060" to .105" (1.52 mm to 2.67 mm panel thickness)
- Includes mounting screws

Part Number	Description	Shipping Weight kg (lb)
26104-001	Rings For 600 mm Cabinets, Black 43 x 127 (1.7 x 5.0), Outside, 25 x 112 (1.0 x 4.4), Inside	9.9 (22)
26106-002	Medium Rings For 800 mm Cabinets, Black 114 x 119 (4.5 x 4.7), Outside - 81 x 89 (3.2 x 3.5), Inside	15.0 (33)
26106-001	Large Rings For 800 mm Cabinets, Black 114 x 249 (4.5 x 9.8), Outside - 81 x 218 (3.2 x 8.6), Inside	13.2 (29)

Color is Black.

Part Number		Description	Shipping Weight kg (lb)
600 mm	800 mm		
26110-700	26120-700	For 42U Cabinets	6.8 (15)
26110-701	26120-701	For 45U Cabinets	8.6 (19)

Color is Black. Shipping weights are for the 800 mm part numbers.

Part Number	Description	Shipping Weight kg (lb)
26140-700	Single PDU Mounting Bracket, 42U	6.4 (14)
26141-700	Double PDU Mounting Bracket, 42U	6.9 (15)
26140-701	Single PDU Mounting Bracket, 45U	6.5 (14.4)
26141-701	Double PDU Mounting Bracket, 45U	7.1 (15.7)

Color is Black.

Part Number	Description	Shipping Weight kg (lb)
26403-700	For 42U Cabinets	12.6 (28)
26403-701	For 45U Cabinets	13.5 (30)

Color is Black.

Part Number	Description	Shipping Weight kg (lb)
76543-001	Clik-Nut Hardware Kit, Cage Nuts, Screws, M6, 25 Pack, Zinc	1 (0.5)
76544-001	Clik-Nut Hardware Kit, Cage Nuts, Screws, #12-24, 25 Pack, Zinc	1 (0.5)
76545-001	Clik-Nut Hardware Kit, Cage Nuts, Screws, #10-32, 25 Pack, Zinc	1 (0.5)

Note: Additional quantities available.



## CPI Passive Cooling®, The Simply Efficient™ Choice

CPI Passive Cooling® Solutions offer innovative techniques that allow you to manage the flow of air throughout your data center without the need for added cooling system units, in-row air conditioners or risky liquid cooling solutions. From small applications with heat loads of 2 kW per cabinet to large data centers with high heat densities up to 32 kW, CPI Passive Cooling Solutions offer smart, proven technology to reduce your data center cooling cost. As the Simply Efficient™ choice, CPI Passive Cooling Solutions allow you to meet tiered requirements for operation of your IT equipment and to deploy the latest servers, switches and blade servers from HP, IBM, Dell, Huawei, Cisco, Juniper Networks and Brocade with confidence.

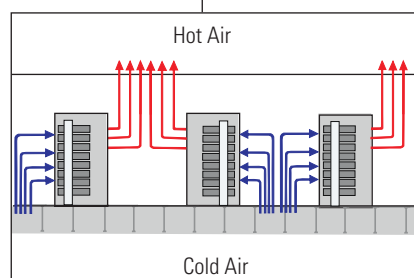
### How Passive Cooling Solutions work:

- **Controls Airflow** – CPI Passive Cooling Solutions control airflow through the cabinet using a specific combination of thermal management accessories. Solutions are available for traditional hot aisle/cold aisle environments and containment.
- **Eliminates Re-circulation** – CPI Passive Cooling Solutions create a one-way airflow pathway through the cabinet that eliminates the mixing of hot and cold air. The high-density solution, which includes a Vertical Exhaust Duct to isolate hot air from the room, guarantees heat transfer directly from equipment to the cooling unit.
- **Increases Cabinet Density** – With a Vertical Exhaust Duct, there is no hot aisle, so cabinet heat loads are not limited by the amount of air that can be delivered through the access floor tiles positioned directly in front of the cabinet.
- **Uses Existing Standard Cooling Equipment** – If the cooling capacity of your existing chilled water computer room air conditioners (CRACs) or air handlers (CRAHs) exceeds your heat load, there is no need to add expensive supplemental in-row cooling.

### Low Heat Density

Combine:

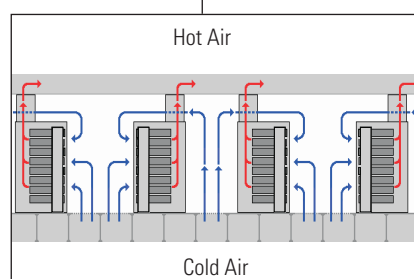
- GT-Series GlobalFrame Gen 2 with:
  - Perforated Front Door
  - Perforated Rear Door
  - Solid Side Panels
  - Solid Top Panel
- Bottom Panel
- Air Dam Kit
- Equipment Rail Grommet Kit
- Snap-In Filler Panels



### High Heat Density

Combine:

- GT-Series GlobalFrame Gen 2 with:
  - Perforated Front Door
  - Solid Rear Door
  - Solid Side Panels
  - Solid Top Panel and Vertical Exhaust Duct
  - Bottom Panel
- Air Dam Kit
- Equipment Rail Grommet Kit
- Snap-In Filler Panels



### Advantages of using CPI Passive Cooling Solutions – High Heat Density Solution with Vertical Exhaust Duct

- **Eliminates hot spots** – isolating and removing hot exhaust air creates a uniform temperature in the room.
- **No additional power or redundancy requirements** – include no active components.
- **Improves cooling system utilization** – capturing hot exhaust air means higher temperature return air, which improves utilization of chilled water CRACs and CRAHs.
- **Increases chiller efficiency or “free cooling” hours** – isolating hot air allows you to confidently raise the supply air temperature, which allows you to raise the chilled water temperature, and increase potential free cooling hours in most locations.
- **Lowers your operating costs** – the combined effect of better cooling system utilization and more free cooling hours provides lower operating costs.



CHATSWORTH PRODUCTS

While every effort has been made to ensure the accuracy of all information, CPI does not accept liability for any errors or omissions and reserves the right to change information and descriptions of listed services and products. ©2016 Chatsworth Products, Inc. All rights reserved. Chatsworth Products, CPI, CPI Passive Cooling, eConnect, MegaFrame, Saf-T-Grip, Seismic Frame, SlimFrame, TeraFrame, GlobalFrame, CUBE-IT PLUS, Evolution, OnTrac, QuadraRack and Velocity are federally registered trademarks of Chatsworth Products. Simply Efficient, Secure Array and Klik-Nut are trademarks of Chatsworth Products. All other trademarks belong to their respective companies. Rev.10 12/16 MKT-60020-518.en-CN