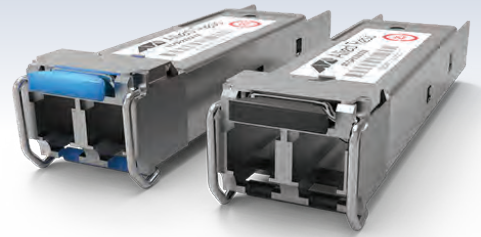


# SP 100Mbps Series

## Small Form-Factor Pluggable Modules

The Allied Telesis 100Mbps SP Series offers the latest industry standard in flexible, full-duplex, Fast Ethernet connectivity. These hot-swappable interfaces simply plug into the SFP slot on all SFP-compatible products. Configuration can be optimized to meet a wide variety of distance and service requirements.



### Options

Allied Telesis SP 100Mbps Series Small Form-Factor Pluggables (SFPs) offers short-haul, long-haul, Bi-Directional (BiDi), and Copper solutions. This flexibility allows network managers to easily extend network distance and bandwidth.

Using an SFP BiDi transceiver can upgrade transmission capacity on a typical network—without installing new fibers—by utilizing a single fiber for both the send and receive signals.

### Compatibility

SP 100Mbps Series SFPs are Multi-Sourcing Agreement (MSA)-compliant, and fully adhere to industry standard networking regulations. This allows the SP 100Mbps Series to be used with other MSA-compliant platforms that support SFP uplink connections.

For Cisco compatibility please refer to the “SFP Compatibility Flyer”

### Standard Data Rates Supported

Fast Ethernet

### Environmental Specifications

Operating Temperature: 0°C to 70°C (32°F to 158°F)  
 Operating humidity: 0% to 85%, non-condensing  
 Storage Temperature: -40°C to 85°C (-40°F to 185°F)  
 Storage humidity: 0% to 80%, non-condensing

### Ordering Information

#### AT-SPFX/2

2 km, 100FX (LC), 1310 nm

#### AT-SPFX/2-90

2 km, 100FX (LC), 1310 nm, TAA compliant

#### AT-SPFX/15

15 km, 100FX (LC), 1310 nm

#### AT-SPTX/100Mbps-00

100 m, 10/100TX, RJ45

#### AT-SPFXBD-LC-13

15 km, 100FX, BiDi SFP (1310 Tx/1550 Rx)

#### AT-SPFXBD-LC-15

15 km, 100FX, BiDi SFP (1550 Rx/1310 Tx)

## Key Features

- ▶ Compact size
- ▶ Flexible architecture
- ▶ Plug and play for ease of use
- ▶ Self-locking mechanism
- ▶ MSA compliant
- ▶ Two year warranty\*

\*Warranties may be region-specific. For local warranty periods, please visit [alliedtelesis.com/support](http://alliedtelesis.com/support), or contact your local sales office.

## Specifications

PRODUCT	FIBER TYPE	CONNECTOR TYPE	MAXIMUM DISTANCE	WAVELENGTH TX/RX (nm)	DDM*	TRANSMIT (dBm)		RECEIVE SENSITIVITY (dBm)	POWER BUDGET (dBm)	OVER-LOAD (dBm)	OPERATING TEMPERATURE
						MIN	MAX				
SPTX/100Mbps-00	10/100TX	RJ45	100 m	-	-	-	-	-	-	-	0°C to 70°C (32°F to 158°F)
SPFX/2	MMF	LC	2 km	1310	-	-20	-14	-31	11	0	0°C to 70°C (32°F to 158°F)
SPFX/2-90	MMF	LC	2 km	1310	-	-20	-14	-31	11	0	0°C to 70°C (32°F to 158°F)
SPFX/15	SMF	LC	15 km	1310	-	-15	-8	-31	16	-8	0°C to 70°C (32°F to 158°F)
SPFXBD-LC-13	SMF	LC	15 km	1310/1550	-	-14	-8	-31	17	-3	0°C to 70°C (32°F to 158°F)
SPFXBD-LC-15	SMF	LC	15 km	1550/1310	-	-14	-8	-31	17	-3	0°C to 70°C (32°F to 158°F)

MMF = Multi Mode Fiber, SMF = Single Mode Fiber

\*Digital Diagnostics Monitoring