

TM400

Compact Enclosure for Mercury Boards

Description

Altronix TM400 accommodates various combinations of select Mercury boards for access systems. It features ample knockouts that are suitable for 0.75" and 1" conduit.

TM400 Features

- Accommodates the following Mercury controllers:
 - Up to three (3) MR50.
 - One (1) EP1501 or MR51e.
 - One (1) EP4502, EP1502, MR52, MR16IN, or MR16OUT.

Features

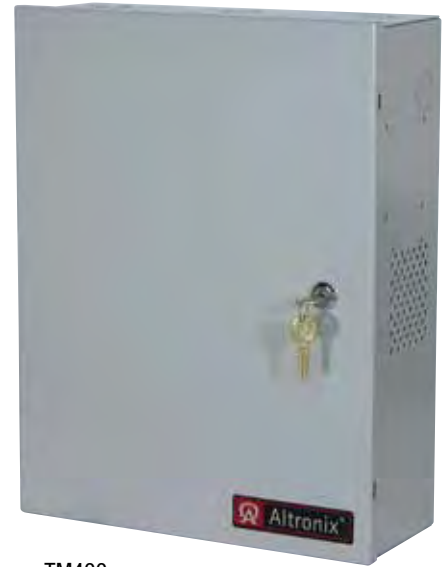
- Simplifies board layout and wire management.
- Convenient knockout configuration:
 - Twelve (12) double knockouts (accommodate 0.75" and 1" conduit).
- Accommodates up to two (2) 12VDC/7AH batteries.
- 16 AWG powder coated steel.
- Includes cam lock, tamper switch and mounting hardware.

Dimensions (H x W x D):

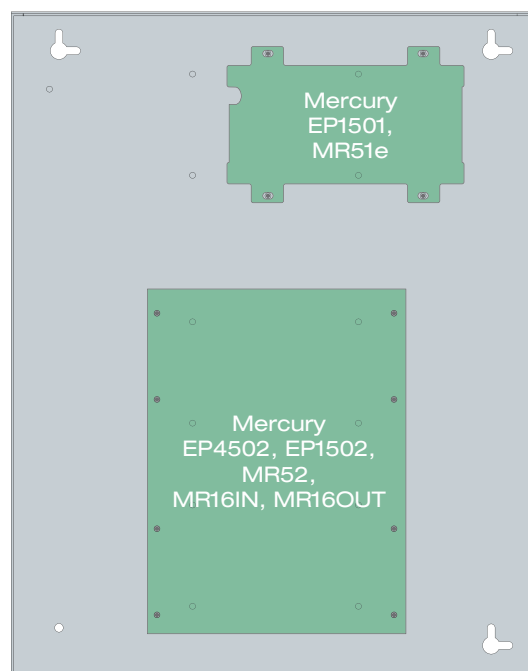
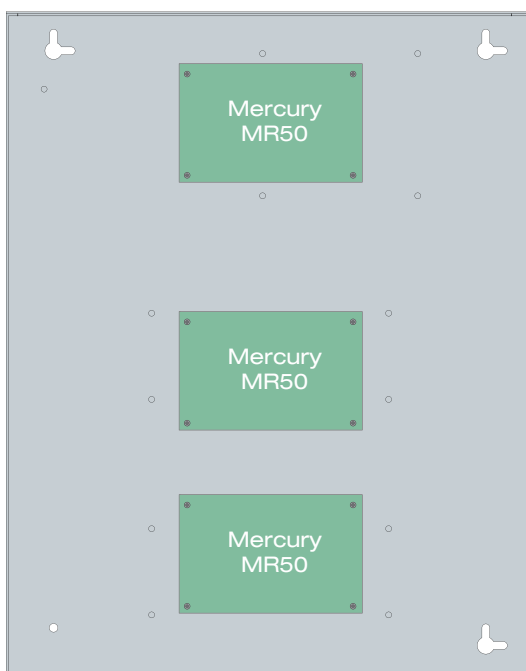
15.5" x 12.0" x 4.5" (393.7mm x 304.8mm x 114.3mm).

Weights:

Product - 7.8 lbs. (3.54kg).
Shipping - 9.1 lbs. (4.13 kg).



TM400



TM400

Compact Enclosure for Mercury Boards



Dimensions and Drawing

Dimensions (H x W x D approximate)

15.5" x 12.0" x 4.5" (393.7mm x 304.8mm x 114.3mm)

