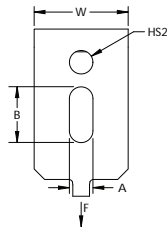
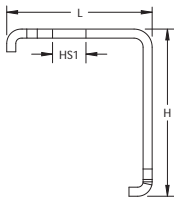


Pin Driven Angle Bracket – AFAB6



- Longer leg angle bracket for tool clearance
- Designed to fit a variety of pin drivers
- Improved for easier installation with pin drivers
- Preassembly options available for rod, wire, strap and cable applications



Part Number	AFAB6
Material	Steel
Finish	Pregalvanized
Hole Size 1 (HS1)	3/8"
Hole Size 2 (HS2)	1/4"
Height (H)	2"
Length (L)	1 3/4"
Width (W)	1 1/8"
A	0.28"
B	0.67"
Static Load (F)	350 lb
Certifications	cULus
Standard Packaging Quantity	50 pc
UPC	78285643893

Load limits apply to nVent CADDY Fasteners only.
Pin must be evaluated separately.

UL, UR, cUL, cUR, cULus and cURus are registered certification marks of UL LLC.

WARNING

nVent products shall be installed and used only as indicated in nVent's product instruction sheets and training materials. Instruction sheets are available at www.erico.com and from your nVent customer service representative. Improper installation, misuse, misapplication or other failure to completely follow nVent's instructions and warnings may cause product malfunction, property damage, serious bodily injury and death and/or void your warranty.

© 2019 nVent All rights reserved

nVent, nVent CADDY, nVent ERICO, nVent ERIFLEX and nVent LENTON are owned by nVent or its global affiliates.

All other trademarks are the property of their respective owners. nVent reserves the right to change specifications without prior notice.

