



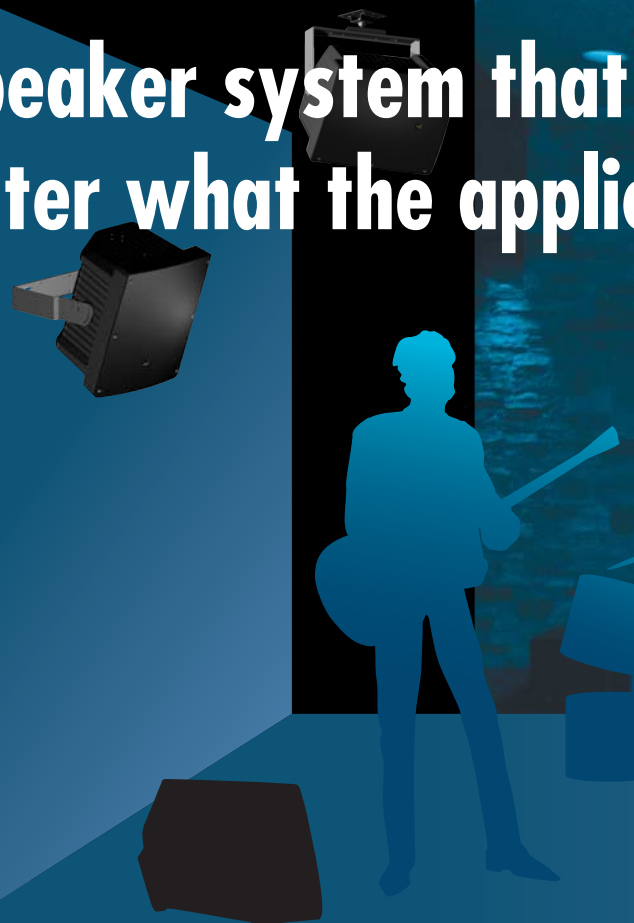
HS SERIES COAXIAL ARRAY SPEAKERS



***TOA presents yet another innovation in sound:
The Coaxial Tweeter Array with
large-diameter woofer.***

Sound that brings forth an emotional response.

Cost-effective mid-size speaker system that high quality sound no matter what the application



One of the most difficult speaker requirements to satisfy is a cost-effective mid-size speaker system that offers high quality sound no matter what the application. TOA HS Series speakers are equipped with narrow-directivity control (90° horizontal \times 40° vertical). This useful feature allows tailoring the speaker's dispersion characteristics to better suit the acoustic environment in which it is installed.

The versatile HS-1200/1500 Series are compatible for use with 100V/70V lines for distributed applications. The HS Series speakers are exceptional in offering useful features at an attractive price.

Large diameter woofer (12"/15") in a compact, lightweight enclosure

With its compact dimensions and light weight, the HS Series proves ideal for use in mid to small-size venues, including restaurants and pubs, conference rooms and lecture halls, schools and similar locations, as well as for temporary installations.

Uniform high quality sound

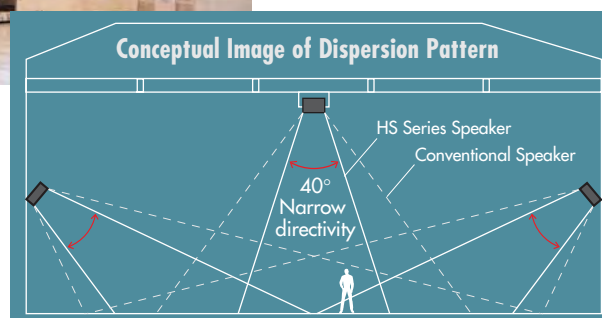
is made possible by mounting the high frequency driver array in a coaxial configuration with the woofer.

- Extended bass frequencies for rich music reproduction
- Optimal sound delivery with well integrated low and high frequencies



Optimal choice for acoustical problems caused by high ceilings

that tend to reduce the clarity of sound reproduction, such as in sports facilities, multi-purpose halls and houses of worship.



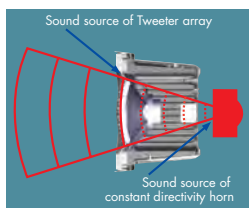
In locations with high ceilings, wide-directivity speakers cause the audio reaching the listeners to lose clarity due to overlapping of attenuated sounds.

offers cation.



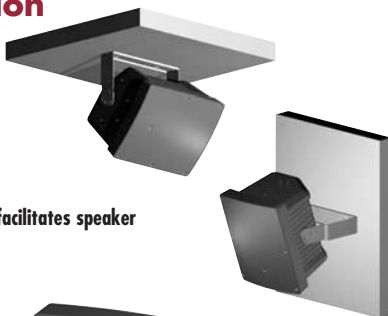
Coaxial Tweeter Array delivers accurate directivity control

HS Series speakers are equipped with narrow-directivity control (90° horizontal x 40° vertical). Well-balanced sound is delivered without treble attenuation to where the speaker is aimed, filling the acoustic space with clear sound.



Versatile installation

Unobtrusive design makes an ideal choice for permanent installations.

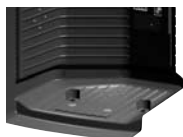


Optional dedicated mounting brackets facilitates speaker installs on walls and ceilings.

Accessory handle for easy transportability



Secure floor setting



Accessory rubber feet for straight positioning.



Wedge-shape enclosure enables use as a floor monitor.

Lineup:

12"/15" woofer, black and white finishes are available.



Twin input terminal sets

The speakon terminal is ideal for quick temporary installation and for testing purposes. The screw terminals are recommended for long-term installation.



SPECIFICATIONS

Model No.	HS-1200BT	HS-1200WT	HS-1500BT	HS-1500WT
Enclosure	Sealed type			
Rated Power	Continuous pink noise: 100W, Continuous program: 300W			
Rated Impedance	8Ω 100V line: 170Ω (60W), 330Ω (30W), 670Ω (15W) 70V line: 83Ω (60W), 170Ω (30W), 330Ω (15W), 670Ω (7.5W)			
Sensitivity	97dB (1W, 1m)		98dB (1W, 1m)	
Frequency Response	70 – 20,000Hz		60 – 20,000Hz	
Crossover Frequency	3kHz			
Directivity Angle	Horizontal: 90°, Vertical: 40°			
Speaker Component	Low frequency: 30cm (12") cone-type, High frequency: Balanced dome tweeter x 6		Low frequency: 38cm (15") cone-type, High frequency: Balanced dome tweeter x 6	
Input Terminal	NEUTRIK NL4MP Speaker and M4 screw terminal, distance between barriers: 9mm (0.35")			
Operating Temperature	-10°C to +50°C (14°F to 122°F)			
Finish	Enclosure: Polypropylene, black Punched net: Surface-treated steel plate, black	Enclosure: Polypropylene, white Punched net: Surface-treated steel plate, white	Enclosure: Polypropylene, black Punched net: Surface-treated steel plate, black	Enclosure: Polypropylene, white Punched net: Surface-treated steel plate, white
Dimensions	361 (W) x 448 (H) x 320 (D)mm (14.21" x 17.64" x 12.60")		451 (W) x 560 (H) x 400 (D)mm (17.76" x 22.05" x 15.75")	
Weight	10 kg (22.05 lb)		14 kg (30.86 lb)	
Accessories	Handle x 1, Handle fitting bracket x 2, Handle mounting screw x 2, Rubber foot x 2, Rubber foot mounting screw x 2			
Options	Mounting bracket: HY-1200VB (for vertical speaker mounting) HY-1200HB (for horizontal speaker mounting) Ceiling mount bracket: HY-C0801 Wall mount bracket: HY-W0801	HY-1200VV (for vertical speaker mounting) HY-1200HW (for horizontal speaker mounting) HY-C0801W HY-W0801W	HY-1500VB (for vertical speaker mounting) HY-1500HB (for horizontal speaker mounting) HY-C0801 HY-W0801	HY-1500VV (for vertical speaker mounting) HY-1500HW (for horizontal speaker mounting) HY-C0801W HY-W0801W

Optional Brackets

For wall/ceiling mount



HY-1500HB



HY-1500HW



HY-1200HB



HY-1200HW



HY-1500VB



HY-1500VW



HY-1200VB



HY-1200VW

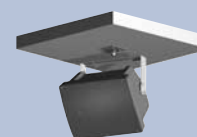
For ceiling mount



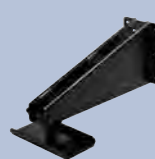
HY-C0801*



HY-C0801W*



For wall mount



HY-W0801*



HY-W0801W*



*To be used in conjunction with HY-1200/1500 Series brackets.



Human Society with
Sound & Communication

TOA Corporation

www.toa.jp

Specifications are subject to change without notice.
Printed in Japan (0801) 833-61-654-40 u