



Conference Systems





Stand-alone TOA conference systems

are designed for maximum reliability and ease of use. Built with a minimum of complexity to enable trouble-free installation and operation, these systems enable conferences to be set up and staged quickly and effectively.



TOA began developing conference systems in 1978. Over the years, we have accumulated a wealth of experience and achievements that have earned our company an excellent reputation for providing highly reliable systems that are easy to use. At TOA, we will continue to offer a full product lineup to support the smooth management of conferences.

Advanced Conference System



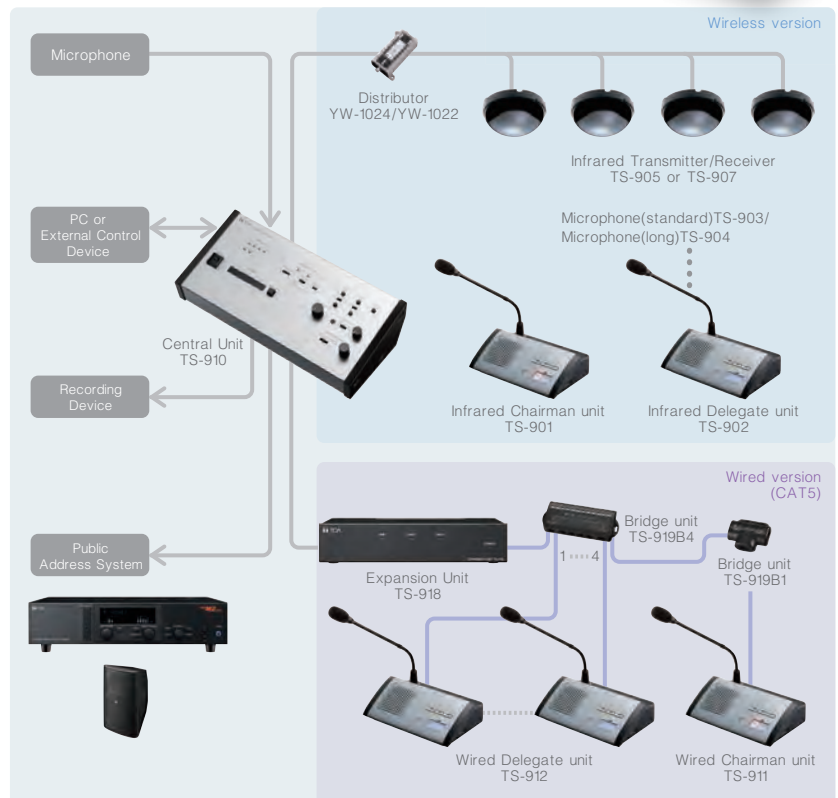
Wired or Wireless Units for System Flexibility

TS-910 series

System Benefits

- No worries about radio interference, eavesdropping, or information leakage, thanks to wireless system's IR communication method.
- Versatile Cat 5 cable connection available for wired units.
- Suitable for either permanent or temporary installation.
- Failure in one terminal unit does not affect other units.
- System can be controlled by external equipment via RS-232C and USB port.
- Individual control of units possible by assigning unit addresses.
- Exceptional sound quality.
- Connect a recording device for high-quality audio recording of conferences.
- Triple choice vote function.
- Bilingual conference capability.
- Built-in feedback suppressor for more efficient reduction of acoustic feedback.
- Stable and stylish hardware design.
- When speaker is on, chairman/delegate unit mic is turned off automatically to avoid feedback, and vice versa.

System Example



with Added Security and Flexibility



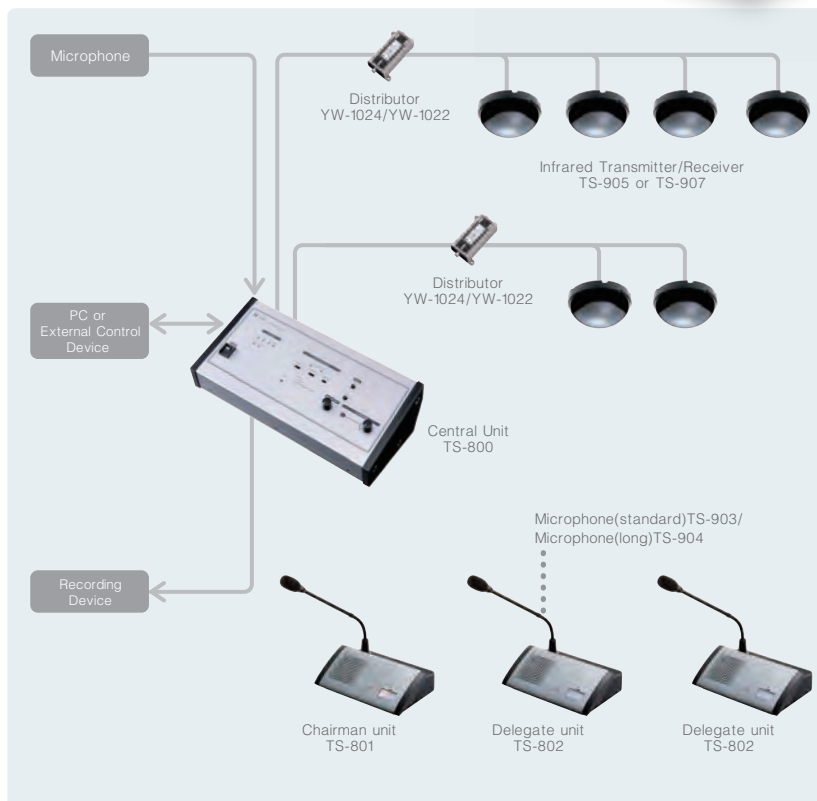
Easy Cable-Free Installation

TS-800 series

System Benefits

- Flexible and easy configuration in different rooms and with varied participant numbers.
- No worries about radio interference, eavesdropping, or information leakage thanks to IR communication method.
- Suitable for either permanent or temporary installation.
- System can be controlled by external equipment via RS-232C.
- Individual control of units possible by assigning unit addresses.
- Exceptional sound quality.
- Connect a recording device for high-quality audio recording of conferences.
- Stable and stylish hardware design.
- When speaker is on, chairman/delegate unit mic is turned off automatically to avoid feedback, and vice versa.

System Example



Superb Conference Functionality in an Easy and Affordable System



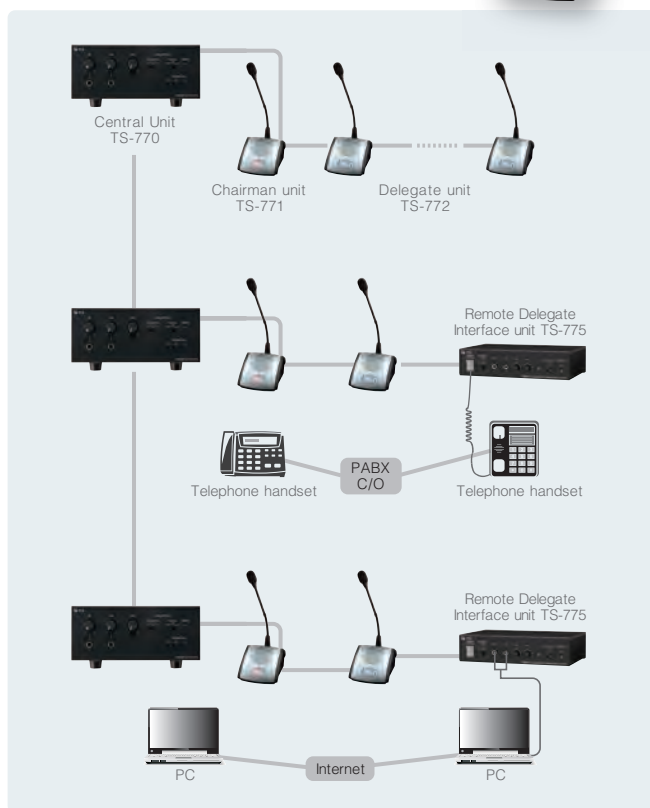
Simple and Compact Wired Conference System

TS-770 series

System Benefits

- Plug-and-play system.
- Up to 70 units can be attached to a single Central Unit.
- System expandable to 210 units by connection of 3 Central Units.
- Connect a recording device for high-quality audio recording of conferences.
- Test function allows connections to be accurately verified.
- Remote Interface Unit facilitates teleconferences.

System Example



Specifications

*0dB = 1V

TS-910 Central Unit		TS-800 Central Unit	
Input	2 x Mic: -60dB*, 600 ohms, unbalanced, phone jack 3 x AUX: -20 dB*, 10k ohms, unbalanced, phone jack	1 x Mic: -60dB*, 600 ohms, unbalanced, phone jack 1 x AUX: -20 dB*, 10k ohms, unbalanced, phone jack	
Output	1 x Line: -20dB*, unbalanced, phone jack 2 x Recording: -20dB*, 10k ohms, unbalanced, phone jack/RCA pin jack 1 x Headphone: mini jack	2 x Recording: -20dB*, 10k ohms, unbalanced, phone jack/RCA pin jack 1 x Headphone: mini jack	
External EQ	Input: -20dB*, 10k ohms, RCA pin jack Output: -20dB*, 10k ohms, RCA pin jack	- -	
No. of connectable Chairman/Delegate Unit	192	64	
External Control Terminal	D-sub connector (9P, male)/USB-B selectable	D-sub connector (9P, male)	
Function Switch	Speaker restriction: set to 1,2,3 and 4 Mic-off function: off or on (selectable) Speech priority selector A/B/C A: First-in-first-out, B: Last-in-first-out, C: Fixed for the first unit and last-in-last out for the subsequent units FBS selection: External/Off/Auto/Manual	Speaker restriction: set to 1,2 and 4 Mic-off function: off or on (selectable) Speech priority selector A/B/C A: First-in-first-out, B: Last-in-first-out, C: Fixed for the first unit and last-in-last out for the subsequent units	
Applicable Unit	TS-901/902/911/912, TS-801/802/811/812	TS-801/802	
Dimensions	359(W) x 118.8(H) x 184.7(D) mm (14.13" x 4.68" x 7.27")	359(W) x 118.8(H) x 184.7(D) mm (14.13" x 4.68" x 7.27")	
Weight	2.8 kg (6.17 lb)	2.7 kg (5.95 lb)	

TS-901 Chairman Unit		TS-902 Delegate Unit		TS-801 Chairman Unit		TS-802 Delegate Unit		TS-911 Chairman Unit		TS-912 Delegate Unit		TS-811 Chairman Unit		TS-812 Delegate Unit		
Power Source	7.4V DC (battery) or 9V DC (AD-0910 AC adapter)								24V DC (supplied from the optional TS-918 Expansion Unit)							
Input	Microphone terminal: XLR-4-31 type								Microphone terminal: XLR-4-31 type							
Output	Monitor speaker: 8 ohms, 0.2W Headphone: Mini jack x 2								Monitor speaker: 8 ohms, 0.2W Headphone: Mini jack x 2							
Battery Life	Approx. 10 hours								-							
Connection Terminal	-								RJ45 connector							
Function	Monitor speaker volume	Monitor speaker volume	Monitor speaker volume	Monitor speaker volume	Monitor speaker volume	Monitor speaker volume	Monitor speaker volume	Monitor speaker volume	Monitor speaker volume	Monitor speaker volume	Monitor speaker volume	Monitor speaker volume	Monitor speaker volume	Monitor speaker volume		
	Headphone volume	Headphone volume	Headphone volume	Headphone volume	Headphone volume	Headphone volume	Headphone volume	Headphone volume	Headphone volume	Headphone volume	Headphone volume	Headphone volume	Headphone volume	Headphone volume		
	Priority speech function	Voting function	Voting function	Priority speech function		Priority speech function	Voting function	Voting function	Priority speech function	Voting function	Voting function	Priority speech function				
	Voting function	Monitor selector switch				Voting function	Monitor selector switch	Monitor selector switch		Monitor selector switch						
Dimensions	210(W) x 65.9(H) x 152(D) mm (8.27" x 2.59" x 5.98")															
Weight	640g (1.41 lb)															

TS-770 Central Unit	
Input	1 x Mic: -60dB*, 600 ohms, unbalanced, phone jack 1 x AUX: -20 dB*, 10k ohms, unbalanced, phone jack
Output	3 x Recording: -20dB*, 10k ohms, unbalanced, phone jack/ RCA pin jack x 2
External EQ	- -
No. of connectable Chairman/Delegate Unit	210
Function Switch	Speaker restriction: Delegate unit* simultaneous operation set to 0, 1, 3 and 6 Mic-off function: off, 20 sec or 40 sec, (selectable)
Applicable Unit	TS-771/772
Dimensions	210(W) x 107.1 (H) x 316 (D) mm (8.27" x 4.22" x 12.44")
Weight	4 kg (8.82 lb)

TS-771 Chairman Unit		TS-772 Delegate Unit	
Power Source	35V DC (supplied from TS-770 Central Unit)		
Input	Microphone terminal: XLR-4-31 type		
Output	Monitor speaker: 130 ohms, 200 mW Headphone/Recording: Mini jack x 1 Contact output: 24C DC, Max 50mA		
Connection Terminal	DIN 8P connector		
Function	Monitor speaker volume Headphone volume Priority speech function	Monitor speaker volume Headphone volume	
Dimensions	114.5(W) x 78.4(H) x 152.9(D) mm (4.51" x 3.09" x 6.02")		
Weight	560 g (1.23 lb)		

Other System Components		
TS-910 Series	TS-918 Expansion Unit	
	TS-919B4 Bridge Unit	
	TS-919B1 Bridge Unit	
	MB-15B-BK Rack Mount Bracket	Bracket for TS-918
	MB-15B-J Rack Mount Bracket	Bracket for TS-918
TS-910/800 Series	TS-903 Microphone	368 mm (1.21 ft) length
	TS-904 Microphone	518 mm (1.7 ft) length
	TS-905 Infrared Transmitter/Receiver	150°(vert.) x 360°(hor.) reception angle
	TS-907 Infrared Transmitter/Receiver	90°(vert.) x 360°(hor.) reception angle
	BP-900 Rechargeable Lithium-ion Battery	
	BC-900 Battery charger	
	AD-0910 AC Adapter	
	YW-1022 Distributor	to 2 outputs
	YW-1024 Distributor	to 4 outputs
	MB-TS900 Rack Mount Bracket	Bracket for TS-910/800
TS-770 Series	TS-773 Microphone	368 mm (1.21 ft) length
	TS-774 Microphone	518 mm (1.7 ft) length
	YR-770-2M Extension Cord	2 m (6.56 ft) length
	YR-770-10M Extension Cord	10 m (32.81 ft) length
	TS-775 Remote Delegate Interface	

Other System Components

TS-910 Series

Bridge Unit



TS-919B1



TS-919B4

Expansion Unit



TS-918

TS-910/800 Series

Microphone



TS-903

TS-904

Infrared Transmitter/
Receiver



TS-905

Ceiling height:
2.5 - 4.5m



TS-907

Ceiling height:
5 - 7m

Rechargeable
Lithium-ion Battery



BP-900

Battery Charger



BC-900

AC Adapter



AD-0910

Distributor



YW-1022
(to 2 outputs)



YW-1024
(to 4 outputs)

Rack Mount Bracket



MB-TS900

TS-770 Series

Microphone



TS-773

TS-774

Extension Cord



YR-770-2M

YR-770-10M

Remote Delegate
Interface Unit



TS-775