

DIN rail adaptor for RJ45 modular jack

Product Classification

Portfolio	NETCONNECT®
Product Type	Adapter
Regional Availability	Asia   EMEA   Latin America   North America

Dimensions

Depth	64.50 mm   2.54 in
Height	77.70 mm   3.06 in
Width	16.13 mm   0.64 in

Environmental Specifications

Environmental Space	Indoor
---------------------	--------

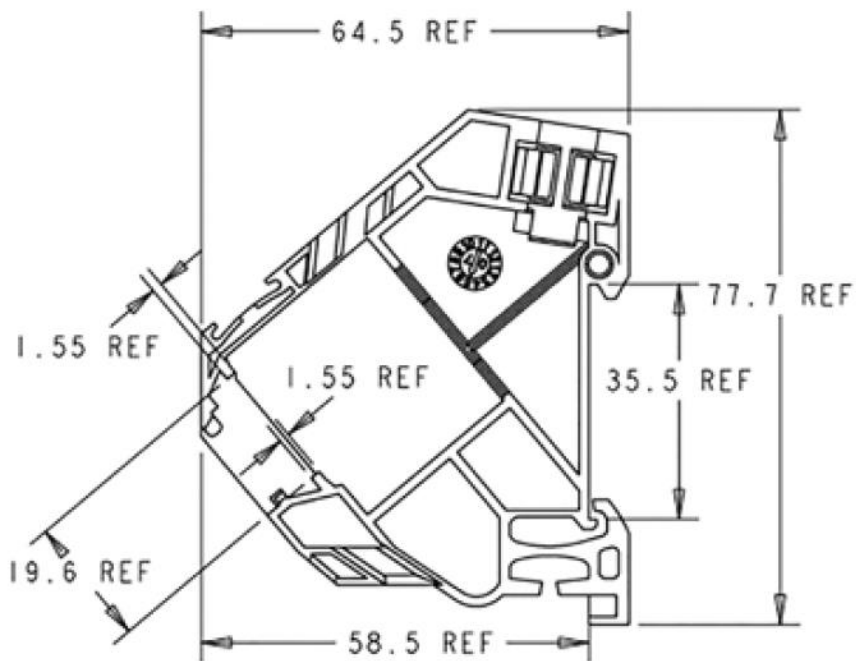
General Specifications

Color	Gray
Application	For use with SL Series outlets (UTP and STP)
Includes	Label holder   Tie wrap
Package Quantity	1
Packaging Type	Bag

Mechanical Specifications

Material Type	Polyamide (PA) 30% glass filled
---------------	---------------------------------

Outline Drawing



#### Outline Drawing

Used as an image placeholder

## Regulatory Compliance/Certifications

#### Agency

RoHS 2011/65/EU

#### Classification

Compliant

