

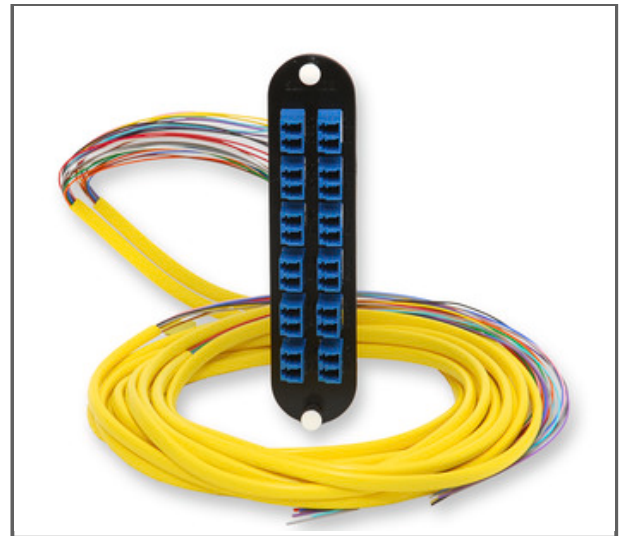
Closet Connector Housing (CCH) Panel, pigtailed, LC Connectors Duplex, UPC, 24 F, Single-mode (OS2), ribbon fiber

CORNING

Part Number: **CCH-CP24-A9-P03RJ**

Corning closet connector housing (CCH) pigtail panels are CCH panels (CCH-CP) with factory-terminated and -tested pigtails installed. They accommodate all industry-standard connector adapter types including the LC, ST® compatible, SC, SC duplex, FC and MT-RJ, as well as the keyed LC. Depending on connector type, they are available in 6-, 8-, 12-, 16- and 24-fiber capacities. Pigtail panels provide easier routing than pigtail modules when the pigtails will be routed and spliced within the same housing. Available with both ribbon and 900 µm tight-buffered MIC® cable types, each CCH pigtail panel is factory terminated and tested. Each module is shipped assembled with adapters and connectorized pigtails installed to the customer's specifications.

Many of our fiber optic hardware products are highly configurable. If you don't see what you are looking for here, please review the ordering matrix contained in the family spec sheet found on the right, or contact Customer Care at 1-800-743-2675.



Features and Benefits

Universal design approach

One-size-fits-all LANscape® Solutions housings

Broadest range of fiber count and adapter types

Solutions for all needs

Colored icon labeling

Easy connector identification

Closet Connector Housing (CCH) Panel, pigtailed, LC Connectors Duplex, UPC, 24 F, Single-mode (OS2), ribbon fiber

CORNING

Specifications

Design - Adapter

Adapter Housing Color	Blue
Adapter Housing Material	Composite
Adapter Style	Standard
Adapter Type	LC duplex
Insert Material	Ceramic

Design

Fiber Count	24
Pigtail Length	3 m (9.84 ft)
Polish	UPC
Number of Adapters per Panel	12
Housing Type	Panels and Modules

General Specifications

Fiber Category	Single-mode (OS2)
Cable type stubbed	Ribbon Fiber
Product Type	Panels and Modules
Application	Data Center , Enterprise Networks

Cable Design

Fiber Count	24
-------------	----

Closet Connector Housing (CCH) Panel, pigtailed, LC Connectors Duplex, UPC, 24 F, Single-mode (OS2), ribbon fiber

CORNING

Connector Specs

Housing Color	Blue
---------------	------

Specifications - Connector A

Housing Color	Blue
---------------	------

Polish	UPC
--------	-----

Ordering Information

Package Contents	CCH Adapter Panel with 3 m pigtail; installation guide
------------------	--

Units per Delivery	1/1
--------------------	-----

Standards

RoHS	Free of hazardous substances according to RoHS 2011/65/EU
------	---



Corning Optical Communications LLC • 4200 Corning Place • Charlotte, NC • 28216 • United States
800-743-2675 • FAX: 828-325-5060 • International: +1-828-901-5000 • www.corning.com/opcomm

A complete listing of the trademarks of Corning Optical Communications is available at www.corning.com/opcomm/trademarks. All other trademarks are the properties of their respective owners. Corning Optical Communications is ISO 9001 certified. © 2020 Corning Optical Communications. All rights reserved.