

ANIXTER

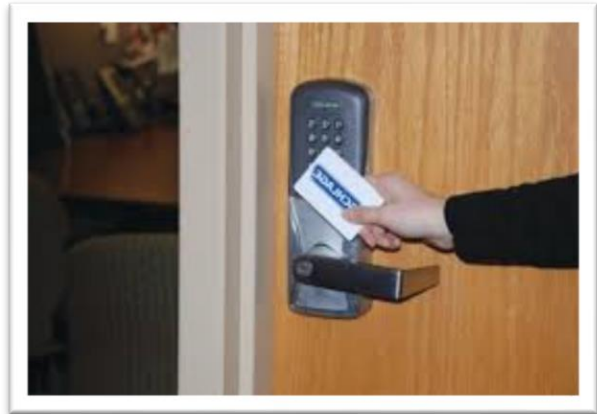
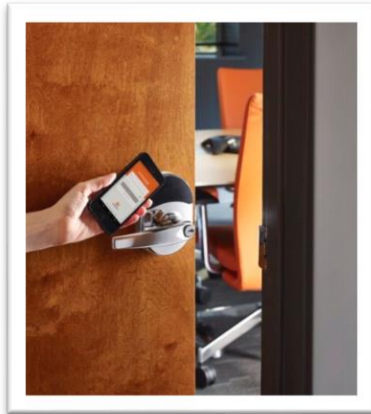
Access Control Standards

by ALLEGION™





For nearly 100 years, **Schlage** has been creating the strongest and most technologically advanced security products for homes, multi-family, commercial, and institutional buildings. We have been meticulous designers, painstaking engineers, and proud craftspeople.



A mainstay in public buildings for decades **Von Duprin's** safety products are known for their unparalleled quality and performance. From innovative exit devices to electronic access control solutions and accessories, Von Duprin never compromises when security is at stake. The quality of Von Duprin's exit devices provides confidence and peace of mind in critical moments

#AccessOpens
Everything



LOCKNETICS®



SCHLAGE



VON DUPRIN®

Locknetics offers simple solutions at practical price points. A versatile offering to fit a breadth of applications, this product line delivers greater flexibility with fewer SKUs. Featuring electric strikes, electromagnetic locks, and access control accessories, This portfolio is designed to meet the challenges of everyday, on-the-job applications.

ANIXTER

Table of Contents

Allegion Access Control Standards



<u>Schlage NDE Wireless Lock</u>	4
<u>Allegion ENGAGE Cloud</u>	5
<u>Schlage AD300 Wired Lock</u>	6
<u>Schlage AD400 900mHz wireless Lock MIFARE</u>	7
<u>Schlage AD400 900mHz wireless Lock iClass®</u>	8
<u>Schlage AD Series Reader Modules</u>	9
<u>Schlage AD Series Accessories</u>	10
<u>Schlage Identity Solutions MIFARE Credentials</u>	11
<u>Schlage MIFARE mini Reader</u>	12
<u>Schlage MIFARE Readers</u>	13
<u>Schlage MIFARE Readers Mobile Enabled</u>	14
<u>Schlage HandKey II Biometric</u>	15
<u>Electric Strikes – Light Duty</u>	16
<u>Electric Strikes – Medium Duty</u>	17
<u>Electric Strikes – Heavy Duty</u>	18
<u>Locknetics – Mag Lock & Motion Sensor</u>	21
<u>Locknetics Competitive Cross Reference</u>	22
<u>Useful Links/Android and Apple apps</u>	23



Schlage NDE Wireless Lock

Online – WIFI – No Tour – Online



Anixter Part #	Schlage Part #	List Price
879707	NDE80RHO626P6	\$943

The **NDE** design packages the cylindrical lock, credential reader, and access control sensors together in to a small footprint that is both easy to install and affordable. The NDE enables the use of both proximity (125 kHz) and/or smart (13.56 MHz) credentials which feature a much higher level of security and versatility.

With the ENGAGE cloud-based web and mobile apps, it's easy to configure lock settings, manage access rights, and view audits and alerts from anywhere. Updates can be sent any time at the lock with the ENGAGE mobile app and occur automatically overnight when NDE is configured to connect to a Wi-Fi network.

NDE wireless locks can also be connected to the ENGAGE Gateway for real-time networked communication with software from one of our software alliance members.

Engage Cloud Platform

Offline – Daily – No Tour

Cloud based Access Control software to manage:

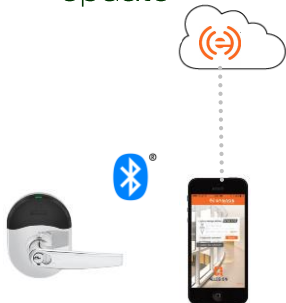
- Up to 100 locks and 5,000 users
- Users and assign access privileges
- Set lock schedules, holidays, user schedules
- View & export audits and alerts
- Add new users and enroll credentials
- Unlimited number of sites



<https://portal.allegionengage.com>

Free ENGAGE cloud software access management
No hidden costs and no monthly fees

Immediate
update~



Send updates at
the lock, anytime,
with the ENGAGE
mobile app.

Automatic daily
updates



Connect locks to the Wi-Fi
network for
automatic daily
updates

No-Tour via Smart
Credentials



Use MT20W
and smart
credentials to
update access
rights to the
lock



Schlage AD300

Wired Electronic Lock RS485



Cylindrical



Mortise



Anixter Part #	Schlage Part #	List Price
MIFARE Ev1 & Proximity Multi-Technology Reader – Mortise		
9822340-NSI	AD300 MS 70 MT RHO 626 BD*	\$2,321
iClass secure sector Reader - Mortise		
9822343-NSI	AD300 MS 70 SI RHO 626 BD*	\$2,498

*BD version no cylinder included includes small format IC core lever not shown

The **AD-300** from Schlage® are designed to be modular and provide more options to choose from, more functionality in the lock and more compatibility with existing systems. Its patented modular design allows the lock to be customized to fit the needs of an application now, and changed to meet future needs without removing it from the door. AD-300 locks communicate either directly to an access control panel via RS-485 or, in a Wiegand system, through a panel interface board (PIB). Modularity allows for more options to choose from, more functionality in the lock, and more compatibility with existing systems. It has a number of features built-in that are configurable in the field and a long list of items that can be monitored by access control software. Please consult one of our [Software Alliance Members](#) for details on the integration of specific features.

Schlage AD400

900mHz Wireless Lock

Multi-technology reader



Cylindrical



Mortise



Anixter Part #	Schlage Part #	List Price
MIFARE Ev1 & Proximity Multi-Technology Reader - Cylindrical		
9822339-NSI	AD400 CY 70 MT RHO 626 PD S123	\$2,257
MIFARE Ev1 & Proximity Multi-Technology Reader – Mortise		
9822341-NSI	AD400 MS 70 LLL RHO 626 PD S123	\$2,530
	2 Door Kit - PIM, RLBD ,2 ADCYMT	
	1 Door Kit – PIM, RLBD ADCYMT	

The **AD-400** wireless networked lock gives you many of the key benefits of a hardwired access control system — without the wires. The AD400 uses a 900 MHz spread spectrum technology. The PIM400-TD2 receiver has standard wiegand output or can be integrated into a 3rd part access control system. 4 standard AA batteries result in approx. 2 year life. Long range approx. 200 foot radius thru standard building construction. Durable mechanical construction independently tested for 16 million cycles. Real time lockdown in 10 seconds or less. 3hr fire rated can be used in exterior applications.

Typically costs 25% less than traditional reader/strike installs
MT Reader compatible with many prox and MIFARE formats.



Schlage AD400

900mHz Wireless Lock

HID® iClass® SEOS® reader



Cylindrical



Mortise



HID® iClass®
SEOS® reader

Anixter Part #	Schlage Part #	List Price
HID® iClass® SEOS® reader – Cylindrical		
9822342-NSI	AD400 CY 70 SI RHO 626 PD S123	\$2,434
HID® iClass® SEOS® reader – Mortise		
9822344-NSI	AD400 MS 70 Si RHO 626 PD S123	\$2,707

The **AD-400** wireless networked lock gives you many of the key benefits of a hardwired access control system — without the wires. The AD400 uses a 900 MHz spread spectrum technology. The PIM400-TD2 receiver has standard wiegand output or can be integrated into a 3rd part access control system. 4 standard AA batteries result in approx. 2 year life. Long range approx. 200 foot radius thru standard building construction. Durable mechanical construction independently tested for 16 million cycles. Real time lockdown in 10 seconds or less. 3hr fire rated can be used in exterior applications.

Typically costs 25% less than traditional reader/strike installs
Si Reader compatible with many HID® SEOS® or iClass® card formats.

Schlage AD Series Reader Modules

Multi-technology & iClass® Readers



Type

Multi-technology Reader

MIFARE Ev2

Proximity

Anixter Part #	Schlage Part #	List Price
CS118023	MT-626	\$736



Type

HID® Secure Sector Reader

iClass®

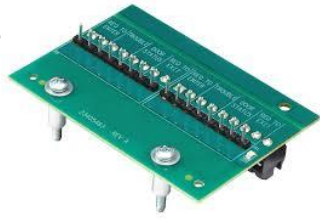
SEOS®

Anixter Part #	Schlage Part #	List Price
CS124582	Si-626	\$852

AD Series electronic locks from Schlage® are designed to be modular and provide more options to choose from, more functionality in the lock and more compatibility with existing systems and ultimately helping to future proof your investment. The MT-626 reader is capable of reading 125kHz proximity cards from AWID, GE/CASI, HID®, XceedID and Schlage along with all MIFARE credentials from Schlage. The SI-626 reader is capable of reading the iClass® and SEOS® secure sectors from HID®.



Schlage AD Series Accessories



The Schlage AD Series Relay Board (**RLBD**) is an add on board used on the PIM400-TD2 and PIB300-2D for access control systems that require Dry Contact closures for supervised inputs

Anixter Part #	Schlage Part #	List Price
CS454773	RLBD	\$253



The Schlage Electronics **PIB300-2D** panel interface board connects up to two AD-300 series networked hardwired electronic locks to an access control panel or reader interface board.

Anixter Part #	Schlage Part #	List Price
CS449646	PIB300-2D	\$499



The **PIM400-TD2** seamlessly integrates to virtually any access control panel and their reader interface modules via Wiegand or Clock & Data protocols. Each PIM400-TD2 supports up to two wireless access devices such as AD-400 or WRI400.

Anixter Part #	Schlage Part #	List Price
CS449647	PIM400-TD2	\$879



MIFARE Credentials

Classic Key Tag & Ev1 ISO Card



Type
Technology
Memory

Thin Key Tag
MiFare Classic 26 bit
2K byte/16k bit

Anixter Part #	Schlage Part #	List Price
941595	9651T CTX6A74	\$8.30*

*Sold in 50s



Type
Technology
Memory

ISO Printable
MiFare Ev 1 26 bit
1K byte/8k bit

Anixter Part #	Schlage Part #	List Price
CS127234	8520 CT5C8427	\$8.40*

*Sold in 100s

MIFARE Classic credentials are ideal for facilities with moderate security needs, and for businesses that want to use credentials to support multiple business functions. They have simple, fixed memory structure yet are freely programmable.

MIFARE DESFire EV1 credentials offer the highest in security from Schlage and deliver the perfect balance of security, speed and performance. Its open protocol design allows future seamless integration of other applications. Flexible file system/flexible memory organization are ideal for combining and supporting multiple applications. 128 AES encryption used for authenticity, confidentiality and integrity



Schlage SM Reader

Contactless Smart Card Reader



Mini Mullion Reader

Anixter Part #	Schlage Part #	List Price
483014	SM10	\$174

Schlage's smart technology reader is sleek, compact and provides cost-effective options for applications requiring high-security technology. The SM10 smart reader meets all applicable ISO standards to integrate with many access control systems, providing easy updates for many existing systems operating on Wiegand interfaces. The mini-mullion design and four finishes make the reader ideal for any installation.

Smart credentials operate on a 13.56 MHz frequency, and utilize high-security encrypted data. It is also mutually authenticated in communication between the card and reader, providing optimum security.

Schlage MT Series Reader

MIFARE Ev2 OSDP + Wiegand



Can READ MIFARE & HID PROX, AWID, GE CASI & more

Anixter Part #	Schlage Part #	List Price
CS109310	MT15-485	\$358
CS109326	MTK15-485*	\$574

*with keypad



Can READ MIFARE & HID PROX, AWID, GE CASI & more

Anixter Part #	Schlage Part #	List Price
CS109292	MT11-485	\$358

The Schlage multi-technology readers are designed to simplify your access control solutions and eases the transition from an existing proximity system to a secure encrypted card technology solution at your own pace—without having to change readers.

Each Schlage multi-technology reader contains 125 kHz proximity, 13.56 MHz smart circuitry enabling the ability to process multiple formats simultaneously. Wiegand, Clock & Data, and RS-485 (OSDP, OSDP Secure) outputs come standard for simple interface with most access control panels.



Schlage MTB Series Reader

MIFARE Ev2 OSDP + Wiegand

NEW



Mobile-Enabled via Bluetooth (BLE)
Near Field Communication (NFC)

Single Gang Reader Available Spring 2020

Anixter Part #	Schlage Part #	List Price
CS129211	MTB15	\$412
CS129220	MTKB15*	\$660

*with keypad

NEW



Mobile-Enabled via Bluetooth (BLE)
Near Field Communication (NFC)

Mullion Reader Available Spring 2020

Anixter Part #	Schlage Part #	List Price
CS127023	MTB11	\$412

The Schlage® mobile enabled multi-technology readers are designed to simplify your access control solutions and eases the transition from an existing proximity system to a secure encrypted card technology or mobile solution at your own pace—without having to change readers.

Each Schlage mobile enabled, multi-technology reader contains 125 kHz proximity, 13.56 MHz smart and 2.4 GHz Bluetooth circuitry enabling the ability to process multiple formats simultaneously. Wiegand, Clock & Data, and RS-485 (OSDP, OSDP Secure) outputs come standard for simple interface with most access control panels.

Schlage HandKey® II

Biometric hand geometry reader



Anixter Part #	Schlage Part #	List Price
9822338-NSI	HK-2-F3 EN-201	\$3,228

Schlage brings the security and convenience of biometric technology to any access control system with the **HandKey® II** hand geometry reader. By using your hand as your credential, this technology provides reliable one-to-one matching - personal proof that people are who they claim to be. This device operate in standalone mode controlling a local locking device. Can be daisy chained or networked controlled by an access control system in real time. The standard model above includes the network board. The Handkey II does not store any personal information, it measures 32,000 dimensions of the hand with an infrared camera and stores data as an algorithm. Thru put is extremely fast at less than 1 second. External readers can be connected for card plus hand dual authentication applications. Also to note the Handkey can be used in exterior environments when ordered with optional heater and placed in an enclosure.

IP Board Only

EN 201 Ethernet Communication Module 10baseT

Anixter Part #	Schlage Part #	List Price
604805	EN-201	\$411



Electric Strikes

Light Duty Applications



VON DUPRIN®

The 4200 Series is ideal for interior commercial traffic control with cylindrical applications. It is designed for easy installation with a dual-voltage internal solenoid and field-configurable power failure mode that can be changed without disassembly.

✓ Cylindrical

Anixter Part #`	Schlage Part #	List Price
879771	4211 US32D	\$193

NEW



LOCKNETICS™

The no cut electric door strike can be used to convert cylindrical lock sets into an electronic access controlled locking system. No cutting on the frame is required. Simply adjust the vertical alignment feature to the latch bolt centerline and install.

✓ Cylindrical ✓ Select Mortise

Anixter Part #	Schlage Part #	List Price
CS123902	NC450 US32D	\$215
CS123905	NC450 LBM US32D	\$284



Electric Strikes

Medium Duty Applications



LOCKNETICS™

The CS Series of electric strikes are designed for use with cylindrical locksets and select mortise locksets without deadbolt for both metal and wood door frames in medium duty applications.

✓ Cylindrical ✓ Select Mortise

Anixter Part #`	Schlage Part #	List Price
CS115500	CS750 US32D	\$170



LOCKNETICS™

The RS Series of surface mounted electric rim strikes are designed with endurance and flexibility. Available to accommodate rim exit devices with a 1/2" or 3/4" throw pullman latchbolt and multiple spacers included for superior installation.

✓ Rim ✓ Pullman

Anixter Part #	Schlage Part #	List Price
CS115510	RS200 US32D	\$475
CS115517	RS300 US32D	\$485
CS115515	RS300-F US32D	\$550

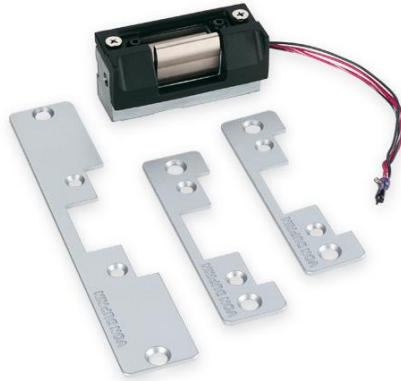




Electric Strikes

Heavy Duty Applications

VON DUPRIN®



The 5100 Series electric door strike is highly configurable, providing a versatile and time-saving solution for interior and exterior doors. It is useful in most retail and commercial applications requiring electric strike use for cylindrical locks or dead latches. The 5100 Series strike can be easily converted in-field with dual voltage and selectable power fail mode to suit the need

✓ Cylindrical


Anixter Part #	Schlage Part #	List Price
CS245976	5100-3FP 689	\$250

LOCKNETICS™



The MDS100 Series electric strike is designed for use with heavy duty mortise locksets and cylindrical locksets. Five different faceplates included for optional flexibility of installation in wood or metal frames.

✓ Cylindrical ✓ Select Mortise

Anixter Part #	Schlage Part #	List Price
 CS115505	MDS100F US32D	\$585
CS115504	MDS100 US32D	\$520



Electric Strikes

Heavy Duty Applications



VON DUPRIN®

The 6400 Series electric door strike is designed to be highly configurable to fit almost any mortise or cylindrical lock. The strike allows installers to insert and lock in place the deadbolt keeper, or the plug and dead latch ramp, anywhere within its 3-1/8" vertical opening to suit latchbolt position and functional needs. Combined with horizontal adjustability, this makes the easy-to-install 6400 Series a good fit for installations where misalignment or a tight fit may be a problem.

✓ Cylindrical

✓ Mortise



Anixter Part #	Schlage Part #	List Price
893136	6400 US32D	\$583



VON DUPRIN®

The 6200 Series electric strikes are designed to use with mortise and cylindrical devices on single and pair doors. These grade 1, heavy-duty strikes are UL 10C fire rated and factory configurable to fail safe or fail secure applications. Their stainless steel construction with integrated faceplate and smooth keeper movement help assure durability and reliability.

✓ Cylindrical

✓ Mortise

Anixter Part #	Schlage Part #	List Price
CS278416	6211 US32D 24VDC	\$744



Electric Strikes

Heavy Duty Applications



VON DUPRIN®

The 6300 Series electric door strike is designed for installation speed and convenience. It can be used with most rim exit devices as a no-cut solution for storefronts and other challenging applications. 6300 Series is Grade 1, fire-rated and suitable for single or pair doors with a mullion. Standard features include plug-in voltage connectors and internal solenoid for a "no-cut" quick installation, indoors or out.

✓ Rim

	Anixter Part #	Schlage Part #	List Price
	CS457159	6300 US32D	\$745

Misc. Locking Devices & Accessories

MagLocks & Motion Sensors



LOCKNETICS™

The MG600 surface mounted electromagnetic lock provides a cost competitive, slim profile and dependable solution for a variety of applications. Designed for up to 600 lbs or 1200 lbs.

Anixter Part #	Schlage Part #	List Price
CS115549	MG600	\$159
CS115550	MG1200	\$239



LOCKNETICS™

This versatile sensor can be surface mounted above any door, as well as the ceiling or wall. The flexibility and low profile design make it an effective sensor for managing building security and traffic flow

Anixter Part #	Schlage Part #	List Price
CS115669	EMS100	\$160



Locknetics

Competitive Cross Reference

Electric strikes

	Locknetics	hes	RCI	SDC	Alarm Controls	Trine
Cylindrical strike - $\frac{9}{16}$ " latch	CS450	5000	L6500	25	AES-100	4200
Cylindrical strike - $\frac{3}{4}$ " latch	CS750	5200	S6500	45	AES-100	4200
Mortise strike - 1" latch	MDS100	-	-	55	-	4100
Mortise strike - Fire rated	MDS100-F	1006	F2164	-	-	-
No cut cylindrical strike - $\frac{9}{16}$ "	NC450	8000	CL	-	-	-
Rim strike - $\frac{1}{2}$ "	RS200	9400	0563	-	-	4850
Rim strike - $\frac{3}{4}$ "	RS300	9600	0162	30	-	4800
Rim strike - $\frac{3}{4}$ " Fire rated	RS300-F	9500	F0162	-	-	4800F

Electromagnetic locks

	Locknetics	Securitron	RCI	SDC	Alarm Controls	Dynalock	Rofu
Indoor	MG600	V600	8371	E600	600S	-	-
Indoor - 600 lb double mag	MG600-2	-	-	1582	600D	2522	8612-2-BD
Indoor	MG1200	V1200	8310	E1200	1200S	-	-
Indoor - 1200 lb double mag	MG1200-2	M62	-	1572	1200D	2268-20	8512-2-B
Weather resistant	WMG600	M32	-	1581	-	-	-
Weather resistant	WMG1200	M62	-	1571	-	-	-

Power supplies

	Locknetics	Securitron	Altronic	Camden Door Controls	Dormakaba
1.5 Amp with enclosure	LP1501	AQD1	AL175ULX	CX-PS10UL	10-1-FPD
2.5 Amp w/ enclosure	LP250	AQD2	AL300ULX	-	10-3-FPD
2.5 Amp with enclosure and 4 output relay distribution board	LP250RDB4	-	AL300ULM with MOM5	-	-
4 output relay distribution board	RDB4	-	MOM5	-	-
1.5 Amp board only	LP150B	AQD1B	AL175B	-	-
2.5 Amp board only	LP250B	AQD2B	AL300B	-	-

1. AL300ULX footprint

Useful Links



- [Allegion Canada Website](#)
- [Allegion Electronic Access Control Catalogue](#)
- Download the Schlage Electronics How-To App for your phone today:



Google Play



- [Anixter Canada Website](#)



Notes





Notes





ANIXTER

About Allegion

Allegion (NYSE: ALLE) is a global pioneer in safety and security, with leading brands like CISA®, Interflex®, LCN®, Schlage®, SimonsVoss® and Von Duprin®. Focusing on security around the door and adjacent areas, Allegion produces a range of solutions for homes, businesses, schools and other institutions. Allegion is a \$2 billion company, with products sold in almost 130 countries. For more, visit www.allegion.com.

KRYPTONITE ■ LCN ■  ■ STEELCRAFT ■ VON DUPRIN

031220