

ROUGHNECK V2000 AND V2100 Mounting Accessories



Vicon's Roughneck and Roughneck Pro line of cameras offer a variety of mounting options for increased installation versatility. These include pendant mounting, in-ceiling mounting, backboxes and adaptor plates for installation on electrical boxes.



ROUGHNECK CAMERA LINE

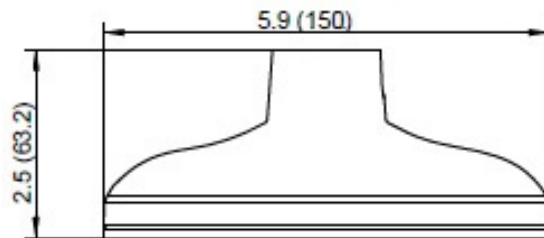


ROUGHNECK PRO CAMERA LINE

V2000D-PM PENDANT MOUNT



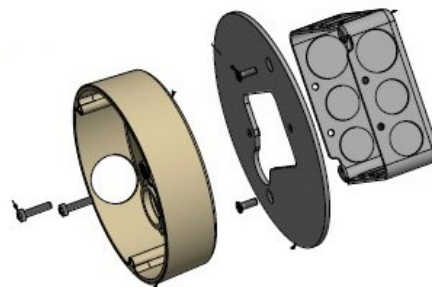
- ▶ Allows the V2000D, V2000D Micro Dome, V2100D and V2360W to be pendant mounted
- ▶ Compatible with SVFT-WM-1 and SVFT-UWM-1 (1-1/2" thread), V-24CMB-4 and V-20B-A-4
- ▶ Dimensions: 2.5 in. (63.2 mm) height; 5.9 in. (150 mm) width
- ▶ Weight: 1 lb (0.45 kg)
- ▶ Construction: Aluminum



V2000D-PLATE



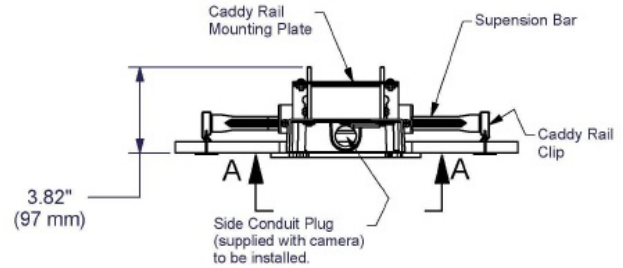
- ▶ Allows the V2000D to be installed on a 4x4 electrical box
- ▶ Dimension: Ø 6.25 in. (158.75 mm)
- ▶ Weight: 1 lb (0.45 kg)
- ▶ Construction: Aluminum



V2000D-ICD IN-CEILING MOUNT



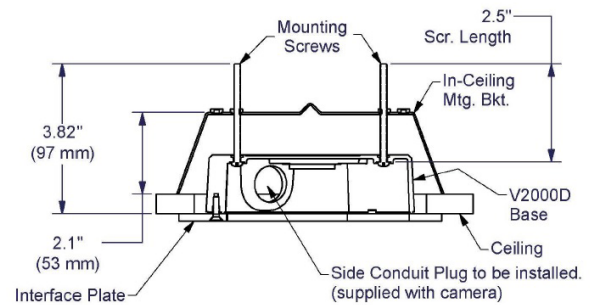
- ▶ Allows the V2000D to be installed in a dropped ceiling
- ▶ Kit contains mounting bracket and all required hardware
- ▶ Height: 3.82 in. (97 mm)
- ▶ Weight: 2.75 lb (1.25 kg)



V2000D-ICH IN-CEILING MOUNT



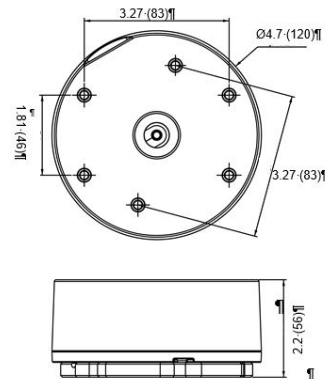
- ▶ Allows the V2000D to be installed in a hard ceiling
- ▶ Kit contains mounting bracket and all required hardware
- ▶ Height: 3.82 in. (97 mm)
- ▶ Weight: 0.72 lb (0.33 kg)



V2000D-MICRO-BOX



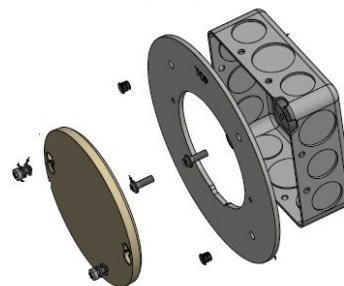
- ▶ Backbox for ease of cabling for the V2000D micro dome camera
- ▶ Two 3/4" NPT cable access holes
- ▶ Construction: Aluminum
- ▶ Dimensions: Ø 4.7 in. (120 mm); 2.2 in. (56 mm) height
- ▶ Weight: 1 lb (0.45 kg)



V2000D-MICRO-PLATE



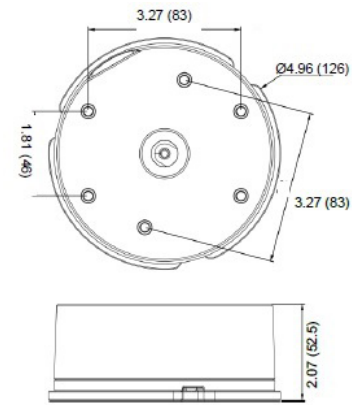
- ▶ Allows the V2000D micro dome camera to be installed on a 4x4 electrical box
- ▶ Construction: Aluminum
- ▶ Dimension: Ø 6.5 in. (165.1 mm)
- ▶ Weight: 1 lb (0.45 kg)



V2100D-BOX



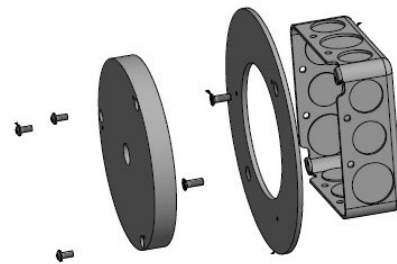
- ▶ Backbox for ease of cabling for the V2100D dome camera
- ▶ Two 3/4" NPT cable access holes
- ▶ Construction: Aluminum
- ▶ Dimensions: Ø 4.96 in. (126 mm); 2.07 in. (52.5 mm) height
- ▶ Weight: 1 lb (0.45 kg)



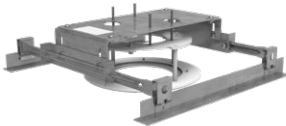
V2100D-PLATE



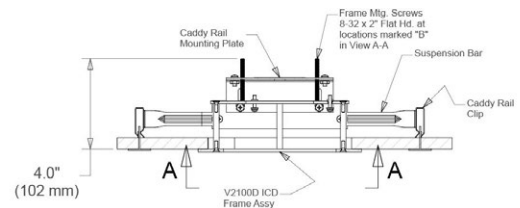
- ▶ Allows the V2100D to be installed on a 4x4 electrical box
- ▶ Construction: Aluminum
- ▶ Dimension: Ø 6.25 in. (158.75 mm)
- ▶ Weight: 1 lb (0.45 kg)



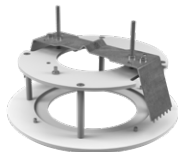
V2100D-ICD IN-CEILING MOUNT



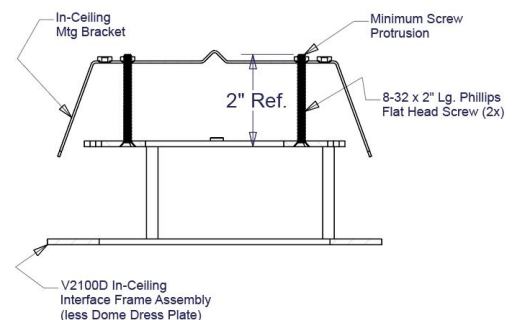
- ▶ Allows the V2100D to be installed in a dropped ceiling
- ▶ Kit contains mounting bracket and all required hardware
- ▶ Height: 3.88 in. (99 mm)
- ▶ Weight: 2.75 lb (1.25 kg)



V2100D-ICH IN-CEILING MOUNT



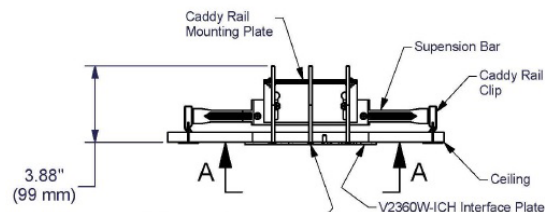
- ▶ Allows the V2100D to be installed in a hard ceiling
- ▶ Kit contains mounting bracket and all required hardware
- ▶ Height: 3.88 in. (99 mm)
- ▶ Weight: 0.72 lb (0.33 kg)



V2360W-ICD IN-CEILING MOUNT



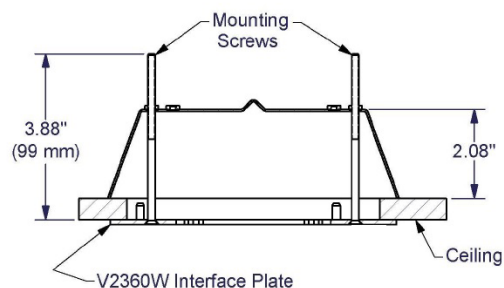
- ▶ Allows the V2360W to be installed in a dropped ceiling
- ▶ Kit contains mounting bracket and all required hardware
- ▶ Height: 3.88 in. (99 mm)
- ▶ Weight: 2.75 lb (1.25 kg)



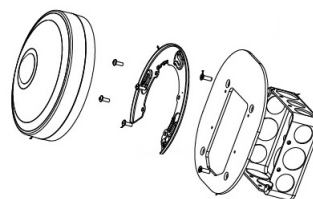
V2360W-ICH IN-CEILING MOUNT



- ▶ Allows the V2360W to be installed in a hard ceiling
- ▶ Kit contains mounting bracket and all required hardware
- ▶ Height: 3.88 in. (99 mm)
- ▶ Weight: 0.72 lb (0.33 kg)



V2360W-PLATE



- ▶ Allows the V2360W to be installed on a 4x4 electrical box
- ▶ Construction: Aluminum
- ▶ Dimension: Ø 6.5 in. (165.1 mm)
- ▶ Weight: 1 lb (0.45 kg)

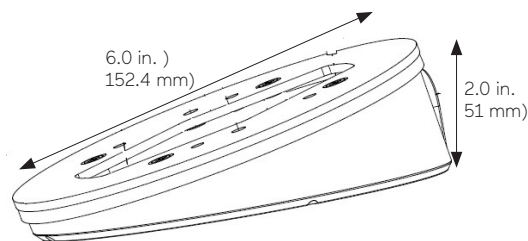
V2XXX-WDG



V2XXX-WDG-PLATE



- ▶ Allows the V2360W/V2000D micro dome to be surface mounted on a tilt to maintain full view
- ▶ Construction: Aluminum and steel
- ▶ Dimension: Ø 6.0 in. (152.4 mm); 2 in. (51 mm) height
- ▶ Weight: 0.85 lb (0.39 kg)

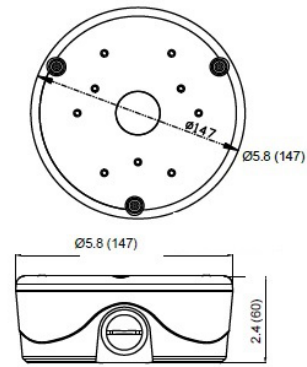


- ▶ Allows the V2XXX-WDG to be mounted on a 4x4 electrical box
- ▶ Construction: Aluminum
- ▶ Dimension: Ø 6.0 in. (152.4 mm)
- ▶ Weight: 0.3 lb (0.14 kg)

V2000B-BOX



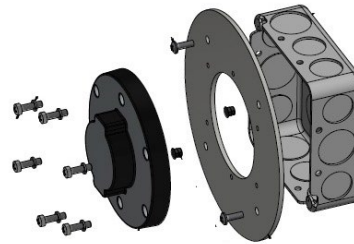
- ▶ Backbox for ease of cabling for the V2000B bullet and V2360W panoramic cameras; compatible with V-24CMB-4 and V-20B-A-4
- ▶ Two 3/4" NPT cable access holes
- ▶ Construction: Aluminum
- ▶ Dimensions: Ø 5.8 in. (147 mm); 2.4 in. (60 mm) height
- ▶ Weight: 2 lb (0.90 kg)



V2000B-PLATE



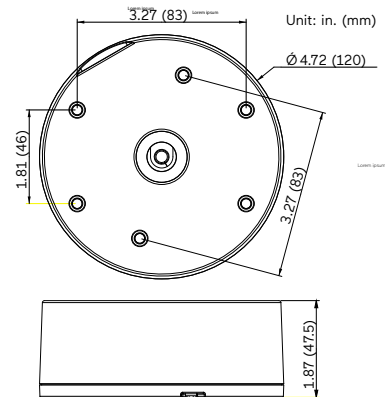
- ▶ Allows the V2000B to be installed on a 4x4 electrical box
- ▶ Construction: Aluminum
- ▶ Dimension: Ø 6.25 in. (158.75 mm)
- ▶ Weight: 1 lb (0.45 kg)



V2100B-BOX



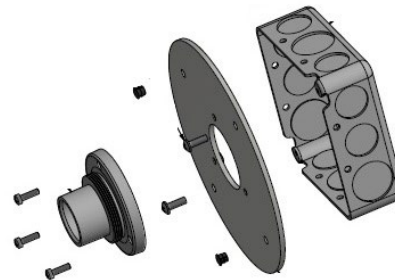
- ▶ Backbox for ease of cabling for the V2100B bullet camera; compatible with V-24CMB-4 and V-20B-A-4
- ▶ Two 1/2" NPT cable access holes
- ▶ Construction: Aluminum
- ▶ Dimensions: Ø 4.72 in. (120 mm); 1.87 in. (47.5 mm) height
- ▶ Weight: 1 lb (0.45 kg)



V2100B-PLATE



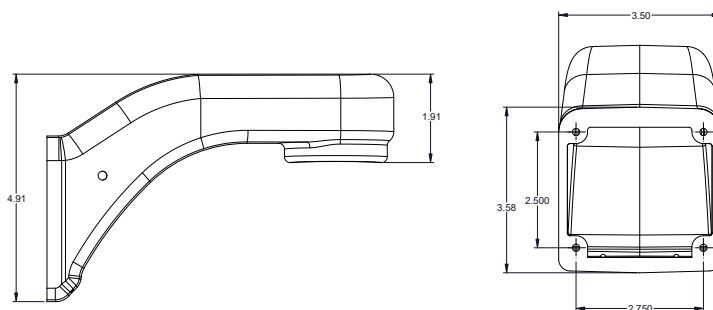
- ▶ Allows the V2100B to be installed on a 4x4 electrical box
- ▶ Dimension: Ø 6.25 in. (158.75 mm)
- ▶ Construction: Aluminum
- ▶ Weight: 1 lb (0.45 kg)



SVFT-WM-1



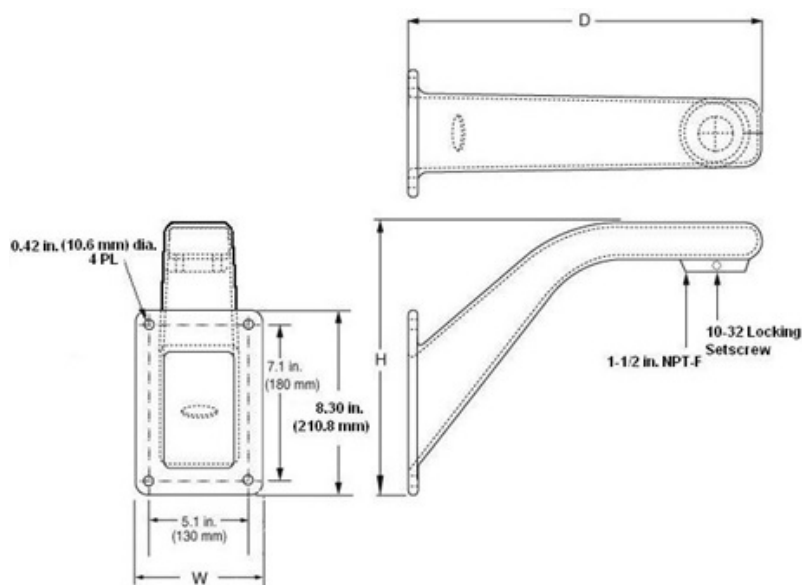
- ▶ Compatible with the V2000D-PM
- ▶ Wall mounting camera domes
- ▶ Cast aluminum construction
- ▶ 1-1/2-inch NPT-F pipe thread
- ▶ Dimensions: Height: 4.9 in. (124 mm); Width: 3.5 in. (89 mm; Depth: 7.5 in. (191 mm)
- ▶ Weight: 1.4 lb (0.6 kg)



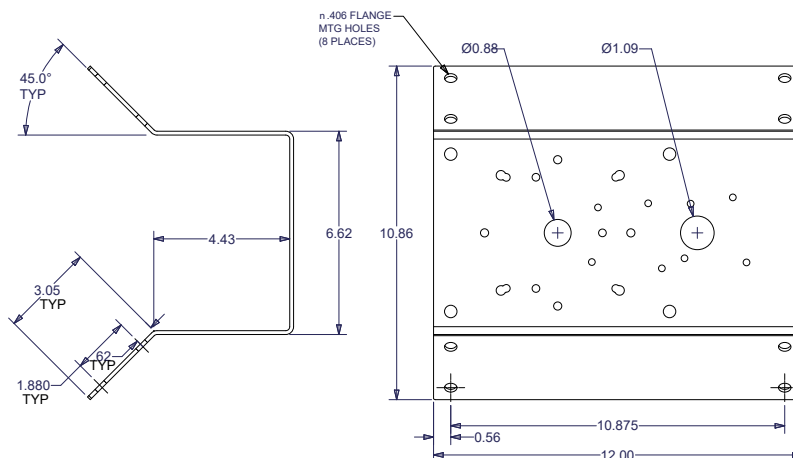
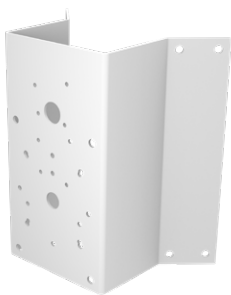
SVFT-UWM-1



- ▶ Compatible with the V2000D-PM
- ▶ Wall mounting camera domes
- ▶ Cast aluminum construction
- ▶ 1-1/2-inch NPT-F pipe thread
- ▶ Dimensions: Height: 11.6 in. (295 mm); Width: 6.3 in. (160 mm); Depth: 14.6 in. (371 mm)
- ▶ Weight: 4.5 lb (2.0 kg)

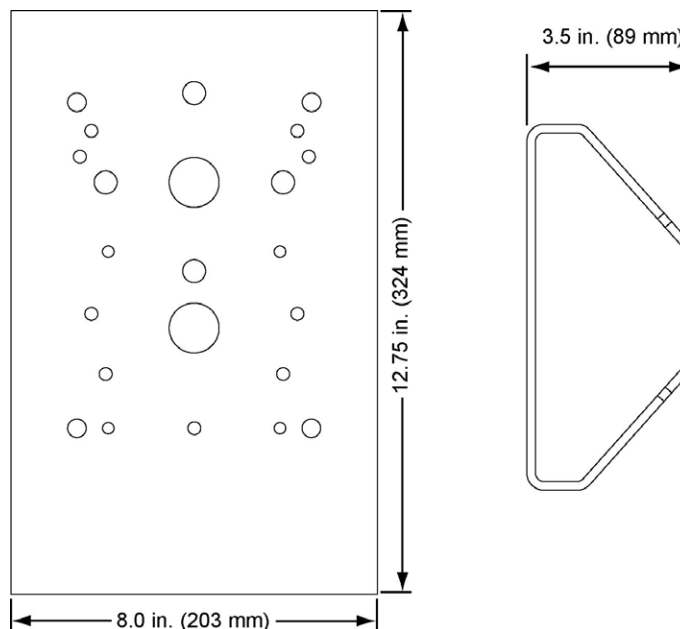


V-24CMB-4



- ▶ For corner mounting V2000D, V2100D, V2100B and SVFT-WM-1 wall mount when used with V2000D-PM; compatible with V2000B-BOX and V2100B-BOX
- ▶ Corrosion-protected steel construction
- ▶ Dimensions: Height: 6.6 in. (168 mm); Width: 12 in. (305 mm)
- ▶ Weight: 8.2 lb (3.7 kg)

V-20B-A-4



- ▶ For pole mounting V2000D, V2100D, V2100B and SVFT-WM-1 wall mount when used with V2000D-PM; compatible with V2000B-BOX and V2100B-BOX
- ▶ Aluminum construction
- ▶ Fits 4 - 10 in. diameter poles
- ▶ Dimensions: Height: 12.75 in. (324 mm); Width: 8 in. (203 mm); Depth: 3.5 in. (89 mm)
- ▶ Weight: 3.7 lb (1.7 kg)

Data Sheet Number: V318-90-03
Vicon Data Sheet Number: 8009-7318-90-03

Specifications subject to change without notice.
Vicon and their logos are registered trademarks of Vicon Industries Inc.
Copyright © 2021 Vicon Industries Inc. All rights reserved.