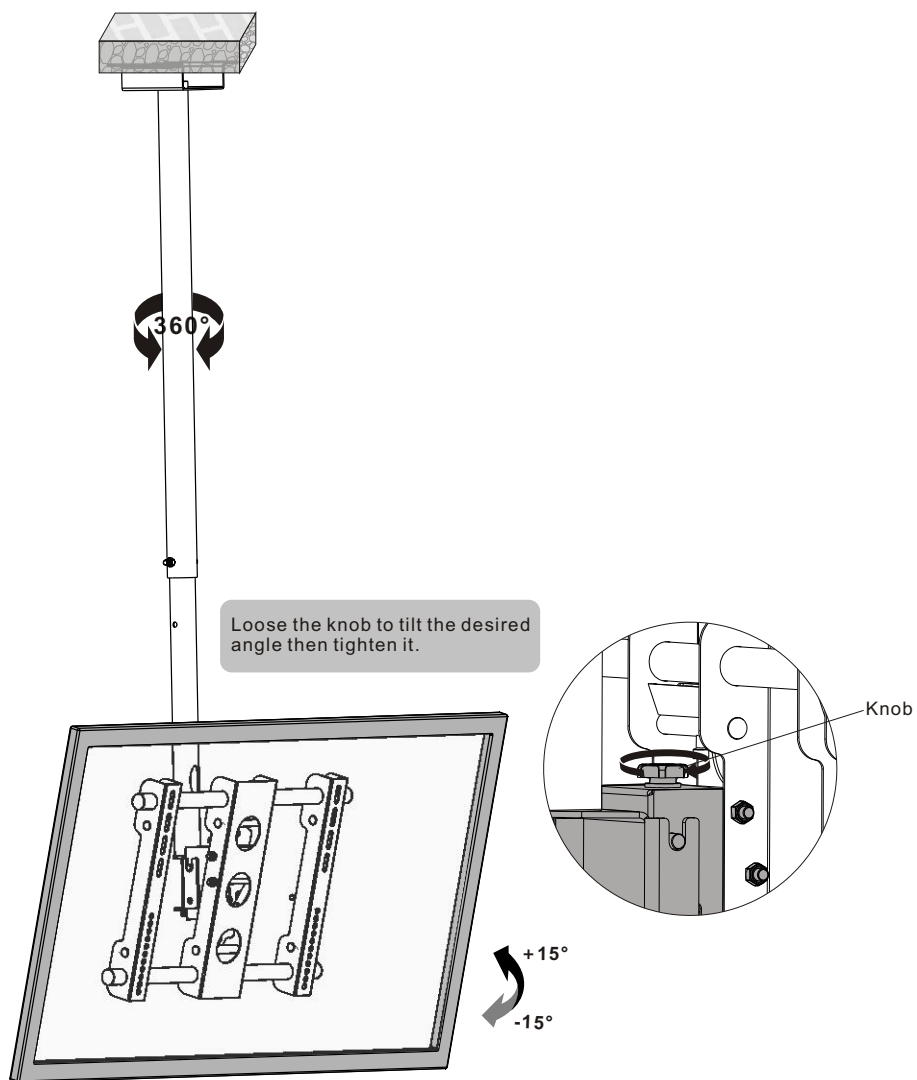




6. Adjustment



Maintenance

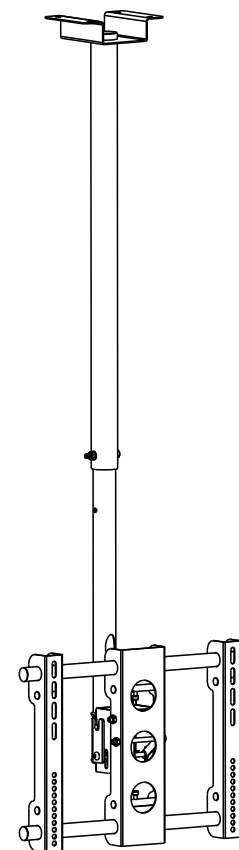
- Check that the bracket is secure and safe to use at regular intervals(at least every three months).
- Please contact your dealer if you have any questions.



Premium Mount Inc
7300 Bolsa Ave., Westminster, CA 92683 -
Phone: 714-766-6303

INSTALLATION INSTRUCTIONS

Flat Panel Ceiling Mount



CAUTION: DO NOT EXCEED MAXIMUM LISTED WEIGHT CAPACITY. SERIOUS INJURY OR PROPERTY DAMAGE MAY OCCUR!

CMH-01



400x200/400x400
600x400/800x400



ISSUED: NOV. 2012

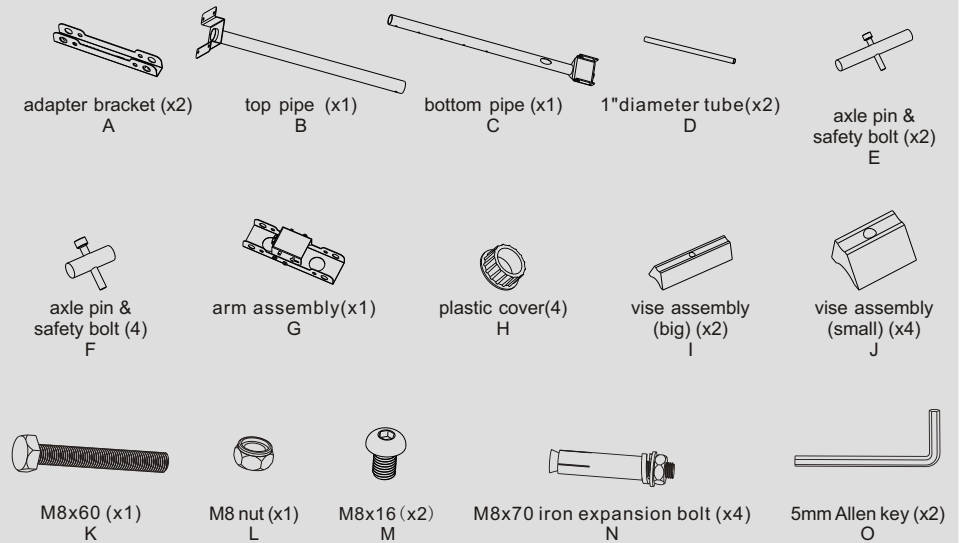
NOTE: Read the entire instruction manual before you start installation and assembly.

WARNING

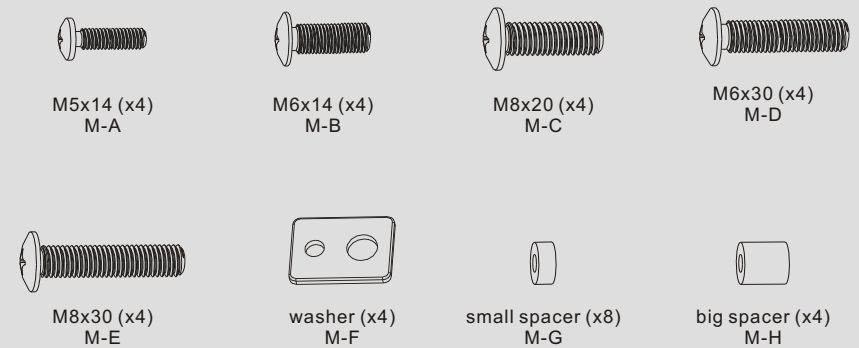
- Do not begin the installation until you have read and understood the instructions and warnings contained in this installation sheet. If you have any question regarding any of the instruction or warning, please contact your local distributor.
- This mounting bracket was designed to be installed and utilized **ONLY** as specified in this manual. Improper installation of this product may cause damage or serious injury.
- This product should only be installed by someone of good mechanical ability, with basic building experience and fully understanding of this manual.
- Make sure that the supporting surface will safely support the combined load of the equipment and all attached hardware and components.
- Always use assistant or mechanical lifting equipment to safely lift and position equipment.
- Tighten screws firmly, but do not over tighten. Over tightening can damage the items, greatly reducing their holding power.
- This product is intended for indoor use only. Using this product outdoors could lead to product failure and personal injury.

Component Checklist

IMPORTANT: Ensure that you have received all parts according to the component checklist prior to installing. If any parts are missing or faulty, telephone your local distributor for a replacement.

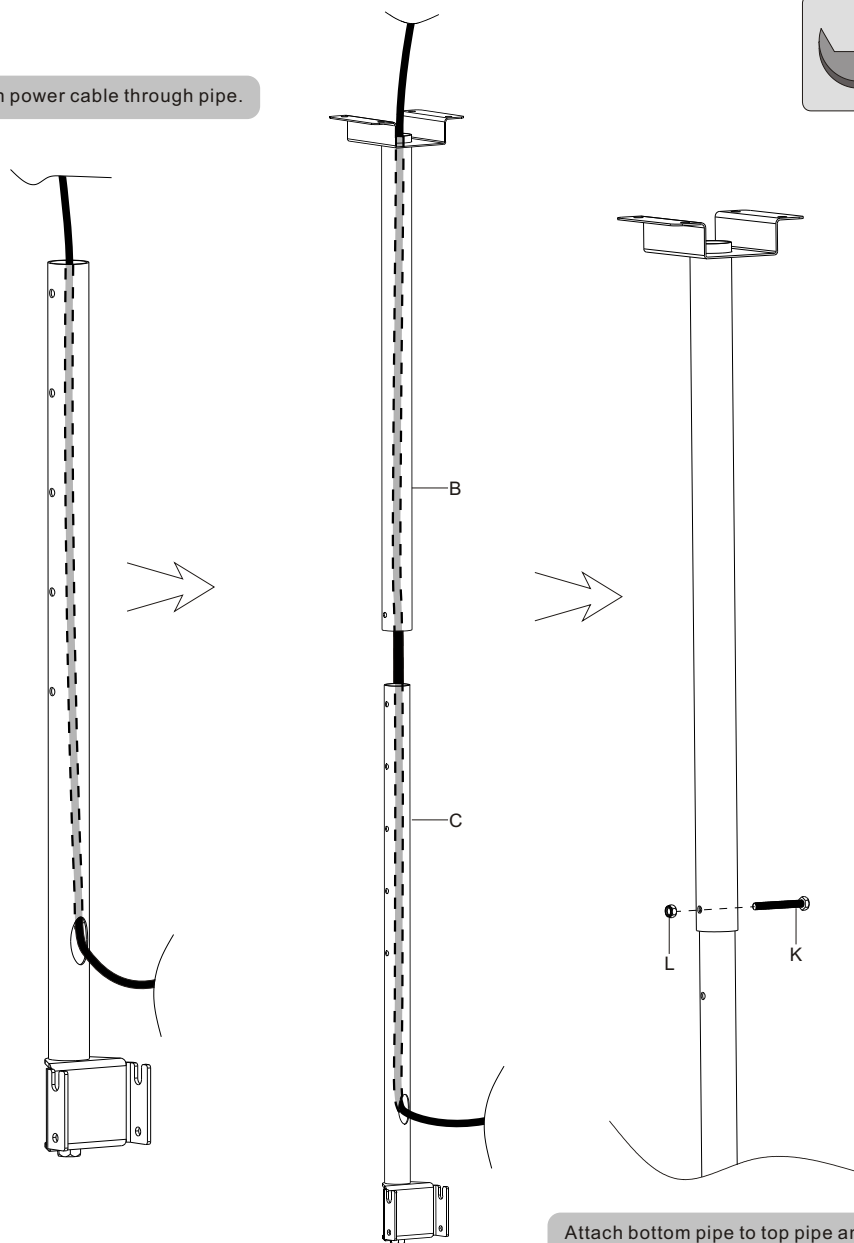


Package M



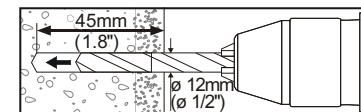
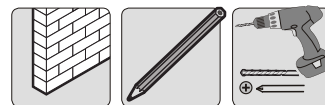
1. Assemble Pipes

Run power cable through pipe.

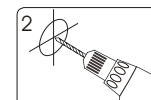
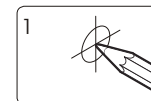


Attach bottom pipe to top pipe and fix them at the desired height. Using correct combination of screw and nut.

2. Mount on Solid Brick and Concrete Block



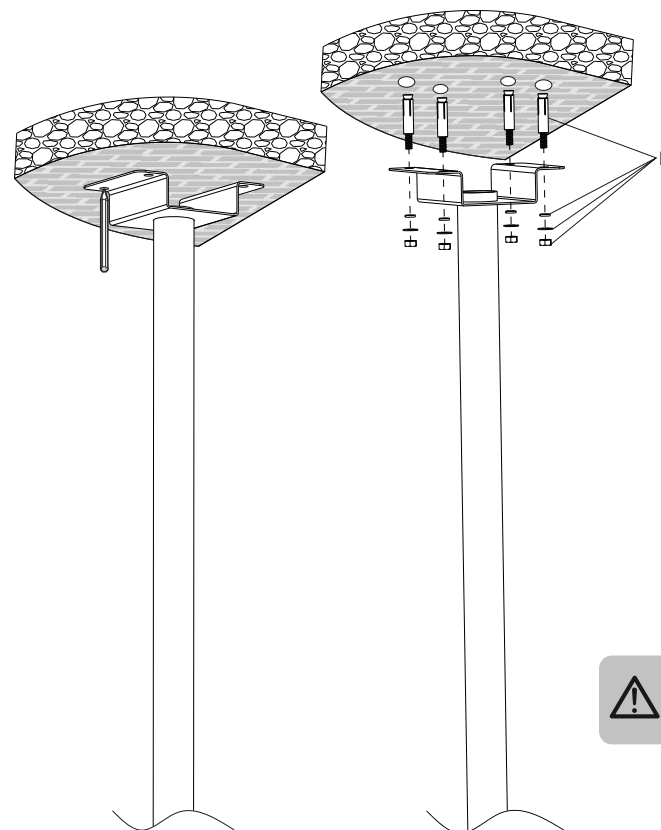
Mark the exact location of mounting holes



Drill four pilot holes



Screw ceiling mount on the ceiling

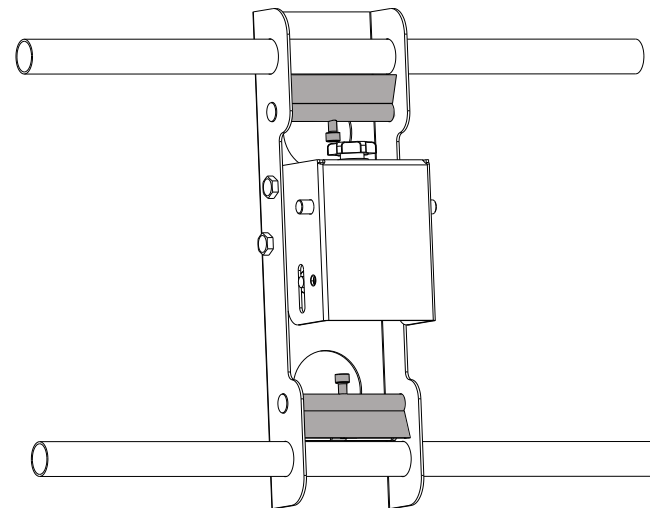
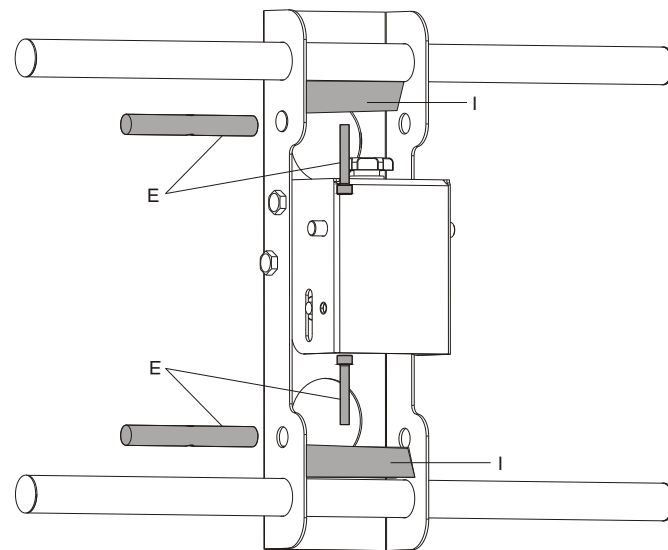
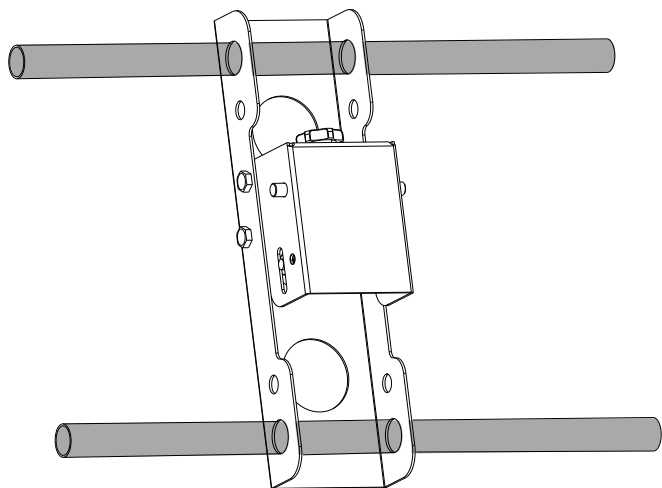
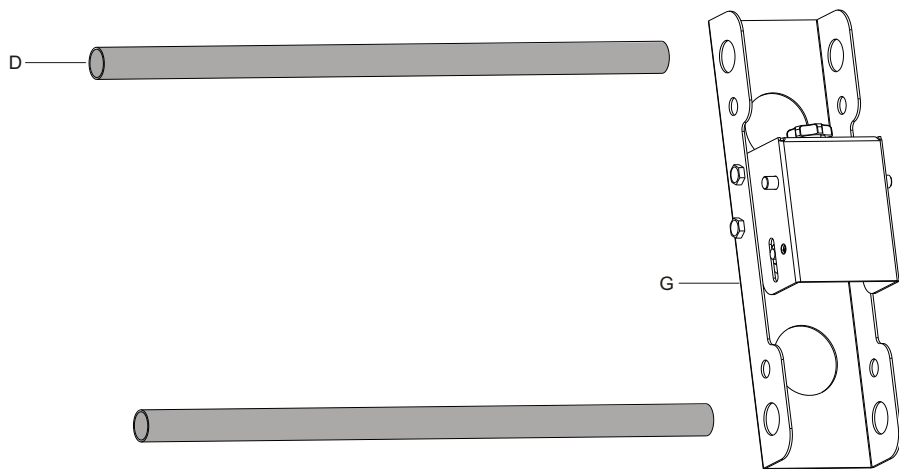


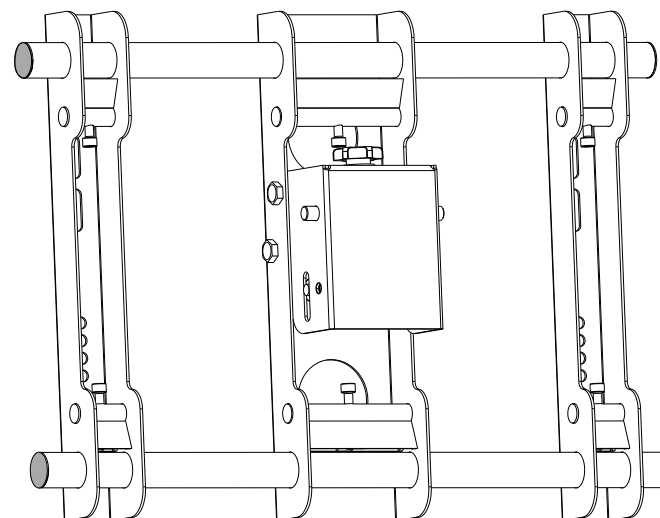
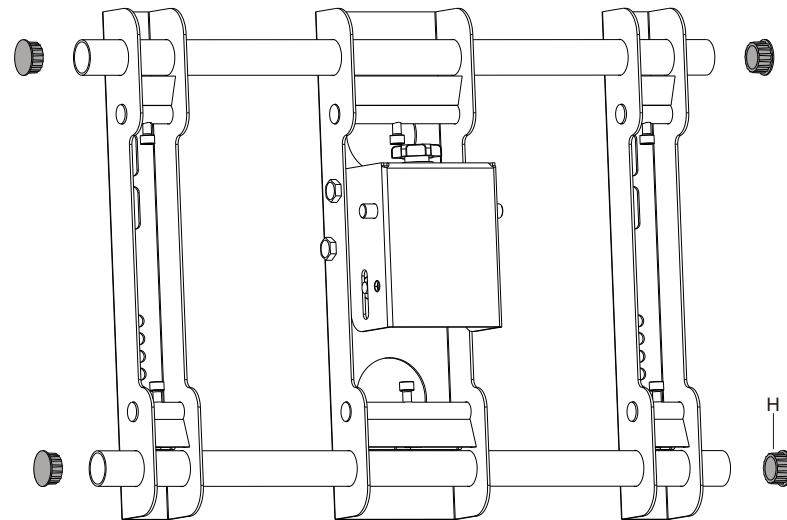
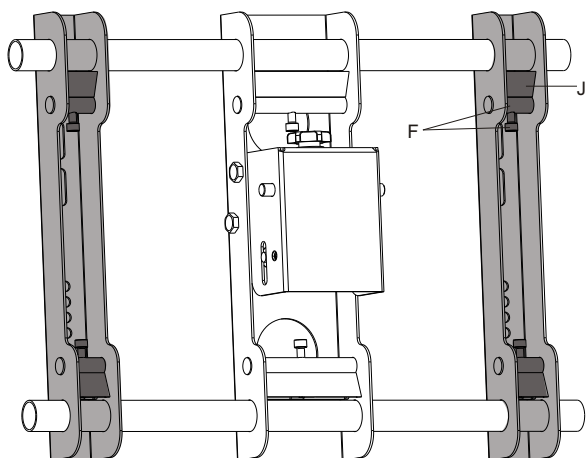
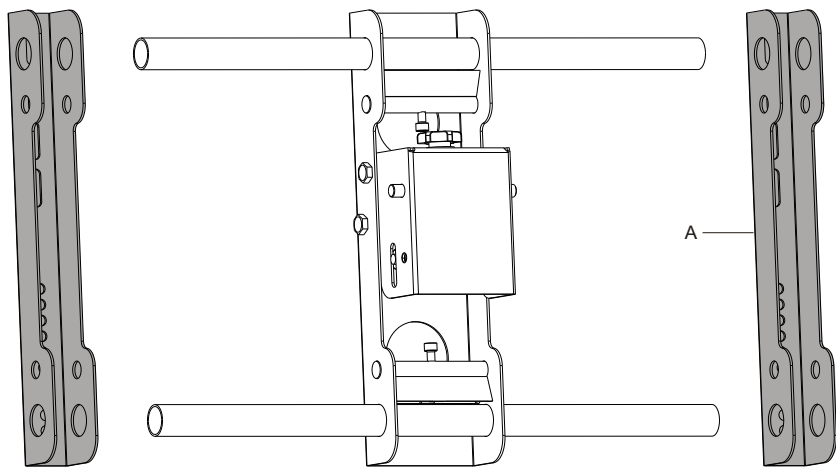
⚠ Tighten all nuts but do not over tighten.

⚠ WARNING

- When installing ceiling mounts on cinder block, verify the actual concrete thickness is at least 1-3/8" (35mm) for using the concrete anchors. Do not drill into mortar joints! Be sure to mount in a solid part of the block, generally 1" (25mm) minimum from the side of the block. It is suggested electric drill on slow setting be used to drill the hole instead of a hammer drill to avoid breaking out the back of the hole when entering a void or cavity.
- Installers must verify that the supporting surface will safely support the combined load of the equipment and all attached hardware and components.

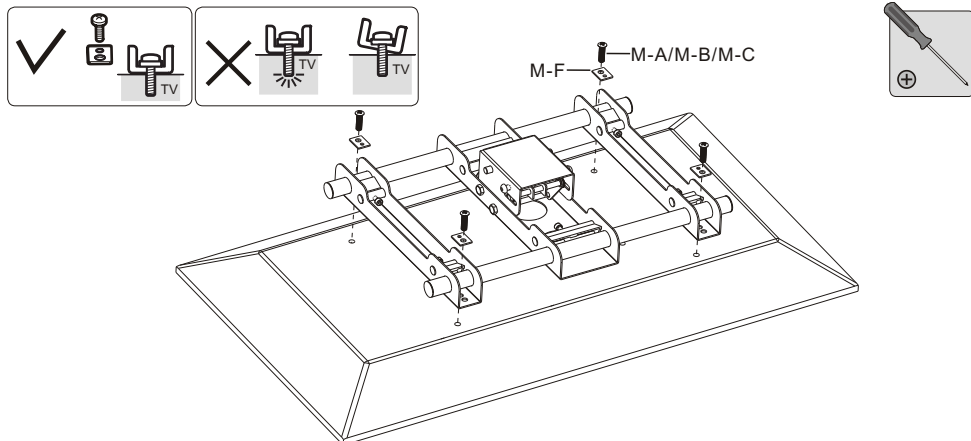
3. Assemble the Universal Plate



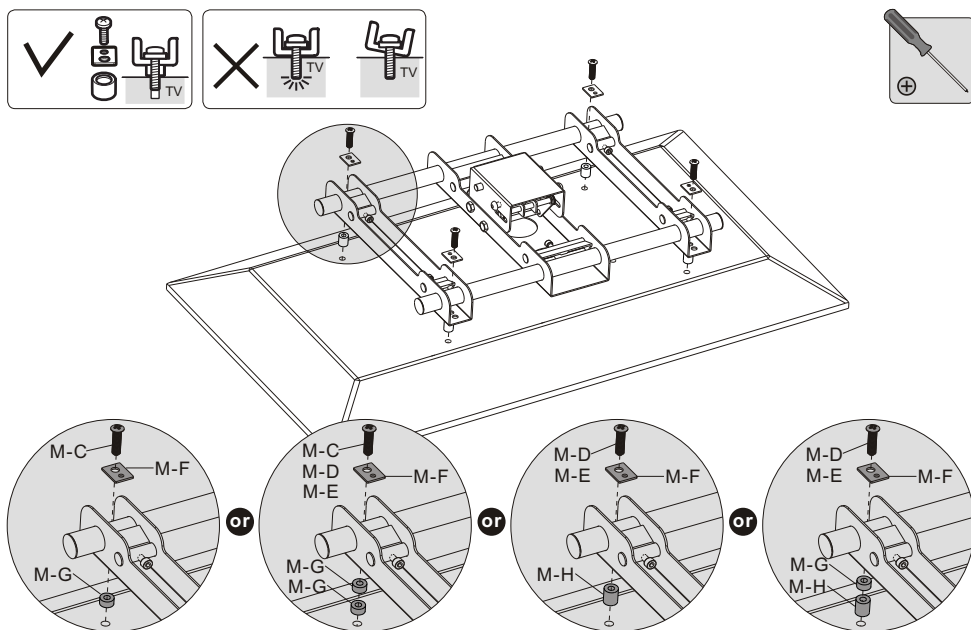


4. Install the Universal Plate

4-1 For Flat Back Screen



4-2 For Recessed Back Screen or to Access A/V Inputs

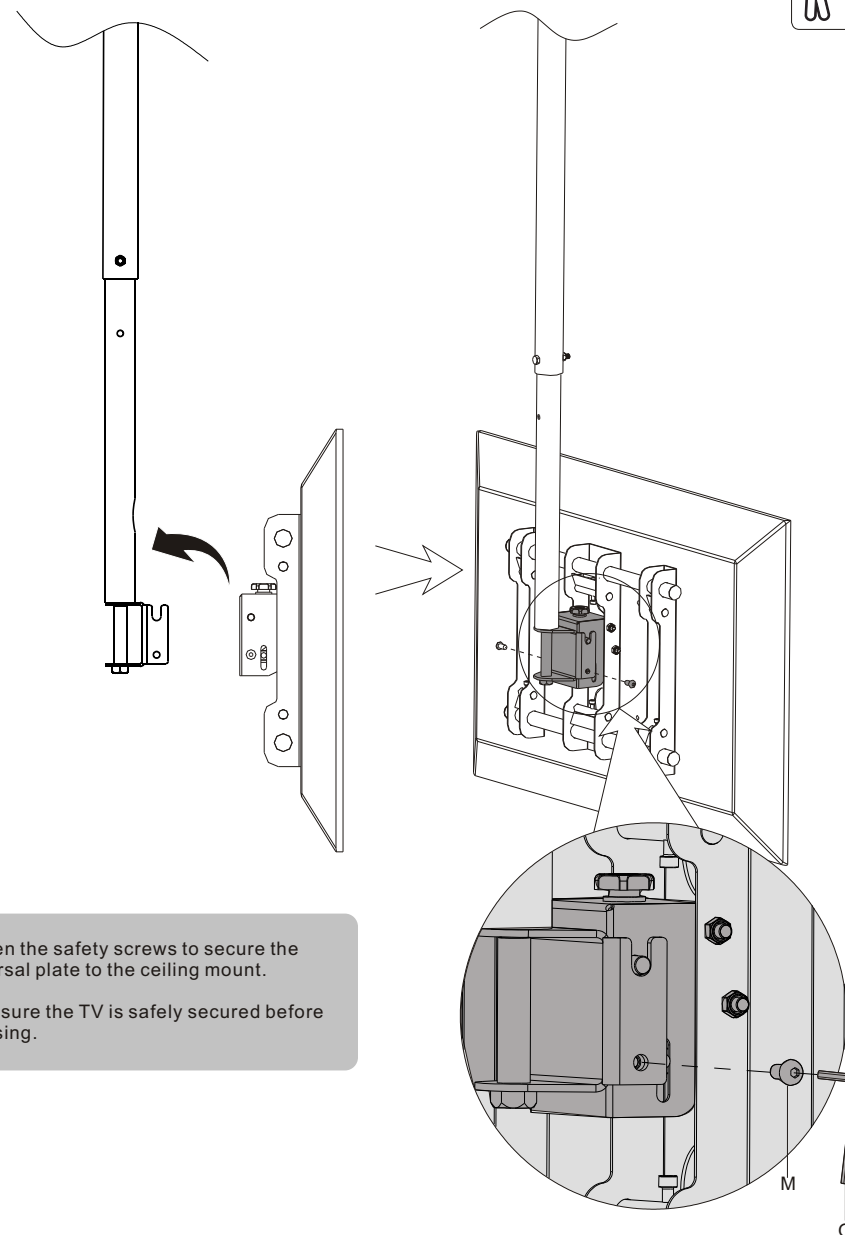


Note: Choose appropriate screws, washers and spacers (if necessary) according to the type of screen.

- Position the universal plate as close as possible to the middle of the screen.
- Screw the universal plate onto the TV.

⚠ Tighten all screws but do not over tighten.

5. Hang TV onto the Universal Plate



Tighten the safety screws to secure the universal plate to the ceiling mount.

Make sure the TV is safely secured before releasing.