

L3JB6

SUPPORTED MODELS:

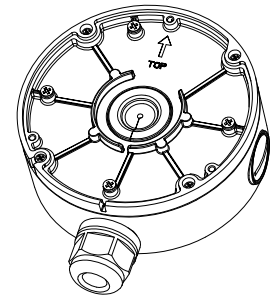
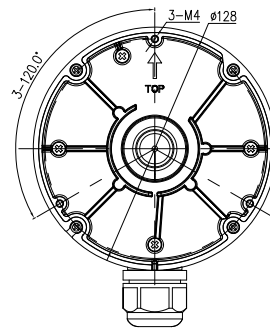
L3IP8TFCS

FEATURES:

- Manages & Protects Cables
- 3/4" Conduit Access
- For Indoor & Outdoor Use



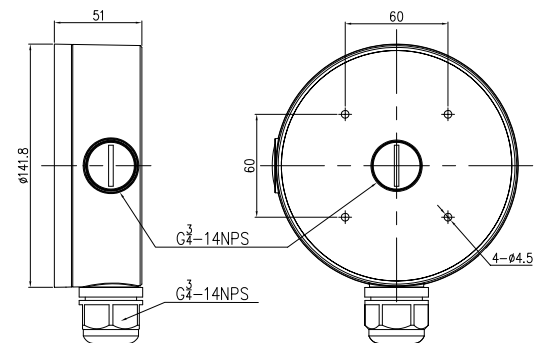
L3JB6



SPECIFICATIONS:

	L3JB6
Material	Aluminum Alloy
Color	White
Product Dimensions	Ø141.8 × 51mm / Ø5.58 × 2.0"
Product Weight	0.58kg / 1.27 Lb.
Max Bearing Weight	3 kg / 6.61 Lb.

DIMENSIONS:



INCLUDED ACCESSORIES:

Item	Qty
Junction box	1
Round Head PM4×12mm Screws	3
Plastic Conduit Cable Connector	1
Rubber Grommet (for cable Ø4.5~5.5mm)	1
Rubber Grommet (for cable Ø6~8mm)	1
3/4" Conduit Caps	2
Mounting Template	1
Torx Screws PM4×10mm	3
T15 Ring Spanner	1
Mounting Hardware Packet	1
Quick Start Guide	1

ABOUT THIS BRACKET – Read Before Use

1. Before installation, please check the bracket packing and accessories are intact. If the bracket is damaged or missing accessories please contact us at 855-388-7422.
2. Do not exceed the MAX load listed on the bracket label.
3. Check the installation area and make sure it will support the total weight of the installed product and bracket.
4. Bracket ships with installation screws, check the material the bracket will be installed onto and use appropriate screws based on the material (may not be supplied with bracket).
5. If the bracket is installed near the ocean or areas exposed to heavy chemicals corrosion may occur which can affect the strength of the bracket. Check the bracket regularly for corrosion.