

SUPPORTED MODELS:

Hinged Wall Mount: L3HWM1

Junction Boxes: L3JB1, L3JB2, L3JB3, L3JB4, L3JB5, L3JB6

FEATURES:

- Metal Straps Included
- For 5-6" Pole Diameters
- Side, Back & Bottom 3/4" Conduit Access

L3POLEMT2



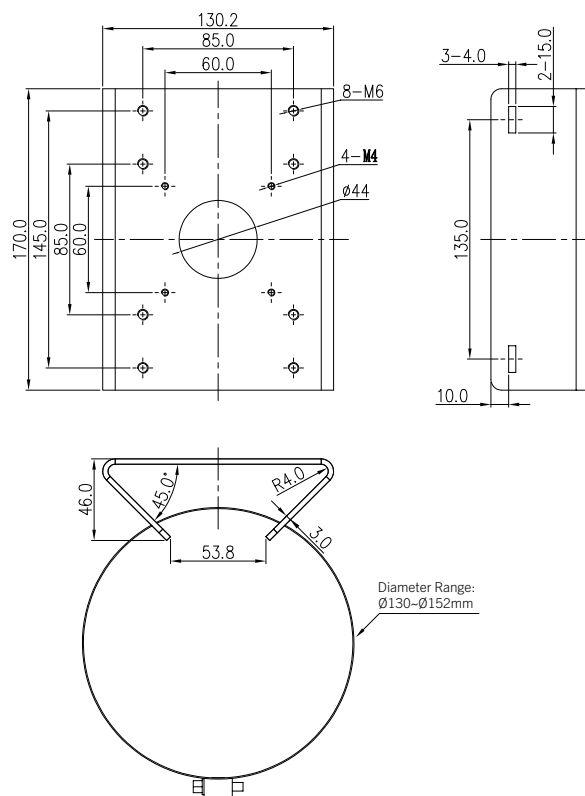
SPECIFICATIONS:

General	
Material	Aluminum Alloy / Stainless Steel
Color	White
Strap Diameter	130 - 152mm / 5.12 x 5.98"
Product Dimensions	130.2 x 46 x 170mm / 5.13 x 1.81 x 6.69"
Product Weight	0.41kg / 0.9lb.
Max Bearing Weight	4kg / 8.82lb.

INCLUDED ACCESSORIES:

Item	Qty
Pole Mount Bracket	1
Stainless Steel Straps	2
Phillips Round Head Screws PM4 x 10mm	4
Hexagon Socket Head Screws M6 x 16mm	4
Expansion Screws M6x60mm	4
Allen Wrench	1

DIMENSIONS:



ABOUT THIS BRACKET – Read Before Use

1. Before installation, please check the bracket packing and accessories are intact. If the bracket is damaged or missing accessories please contact us at 855-388-7422.
2. Do not exceed the MAX load listed on the bracket label.
3. Check the installation area and make sure it will support the total weight of the installed product and bracket.
4. Bracket ships with installation screws, check the material the bracket will be installed onto and use appropriate screws based on the material (may not be supplied with bracket).
5. If the bracket is installed near the ocean or areas exposed to heavy chemicals corrosion may occur which can affect the strength of the bracket. Check the bracket regularly for corrosion.