



## TECHNICAL SPECIFICATIONS

# Patch Panel

Category 6 48 Port

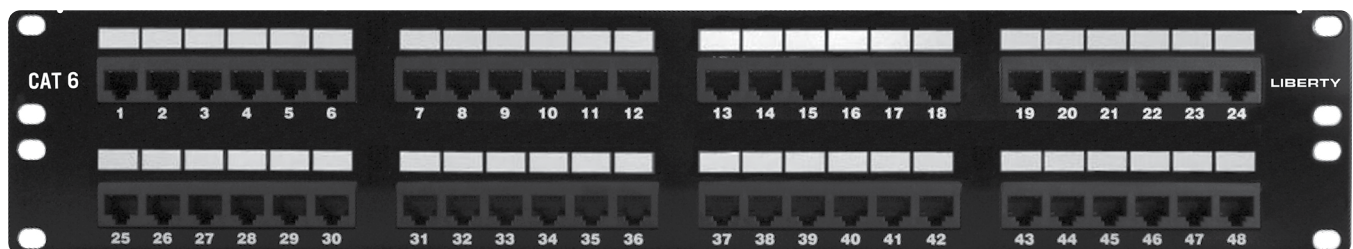
**PART NUMBER:** LPP648P

### APPLICATION:

Liberty 48 port Cat 6 patch panels are mounted in 19" relay racks and wall mount brackets.

### FEATURES:

- Exceeds ANSI/TIA-568 Category 6 performance
- Supports network speeds up to 1 Gbps Ethernet
- Supports PoE applications up to 60 Watts
- Suitable for residential, MDU, small office and low-density communication closets
- Replaceable 6 port modules
- Integrated rear side cable management bar, 1 per 1U



Specifications	
Conductor Gauge, Solid	22 AWG   24 AWG   26 AWG
Conductor Gauge, Stranded	22 AWG   24 AWG
Wiring	T568A   T568B
Termination	110 IDC

Dimensions	
Length	19 in. : 482.6 mm
Height	3.5 in. : 88.9 mm
Rack Mount Units	2U

Construction
<ul style="list-style-type: none"><li>• 16 gauge steel</li><li>• PCB and plastic components are UL94V-0</li></ul>

Industry Standards
<ul style="list-style-type: none"><li>• ANSI/TIA-568 Cat 6 compliant and channel compliant</li><li>• ISO 11801 Class D</li><li>• ANSI/TIA 1096-A (FCC Part 68)</li><li>• IEEE 802/3bt PoE up to 60 Watts</li><li>• UL 1863 Safety Listed</li></ul>

Liberty specifications are nominal and subject to change without notice.  
Registered trademarks are held by the respective owners.