



TECHNICAL SPECIFICATIONS

F-Type Module 1GHz

Female to Female

PART NUMBER: LFKY1GHZ CC

See part legend below

DESCRIPTION:

F-Type Female to Female 1GHz Module.

Construction	
Body/Nut	Nickel Plated Zinc
Seizing Pin	360° Beryllium Bronze with Gold Plating
Insulator	Nylon Dielectric White
Plastic Material	ABS 94V-0

Mechanical Characteristics	
Seizing Pin Range (Accepts Center Conductors)	0.025 in. ~ 0.041 in. : 0.64 mm ~ 1.07 mm Diameter
Holding Force (Initial)	> 0.352 Lbs. : 160 Grams
(After Insertion)	> 0.265 Lbs. : 120 Grams
Housing Shall Support	264.55 Lbs. : 2.2 Kg Force (Min) Applied to Insulator From Either Direction

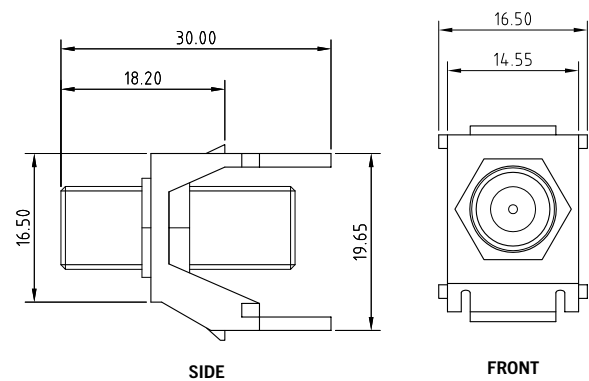
Electrical Characteristics	
Frequency Range	DC - 1GHz
Insertion Loss	< 0.2 dB
Return Loss	> 30dB
Contact Resistance	< 4 Milliohms

Environmental Specifications	
Flammability Rating	UL94V-0
Relative Humidity	Up to 93%, Non-Condensing
Operating Temperature	-40° F to 149° F : -40° C to 65° C

Dimensions	
Depth	1.181 in : 30.00 mm
Height	0.650 in : 16.50 mm
Width	0.650 in : 16.50 mm



MECHANICAL DRAWINGS



Industry Approvals

UL1863 safety listed

PART LEGEND

Module Color (CC)

WH	White	IV	Ivory
-----------	-------	-----------	-------